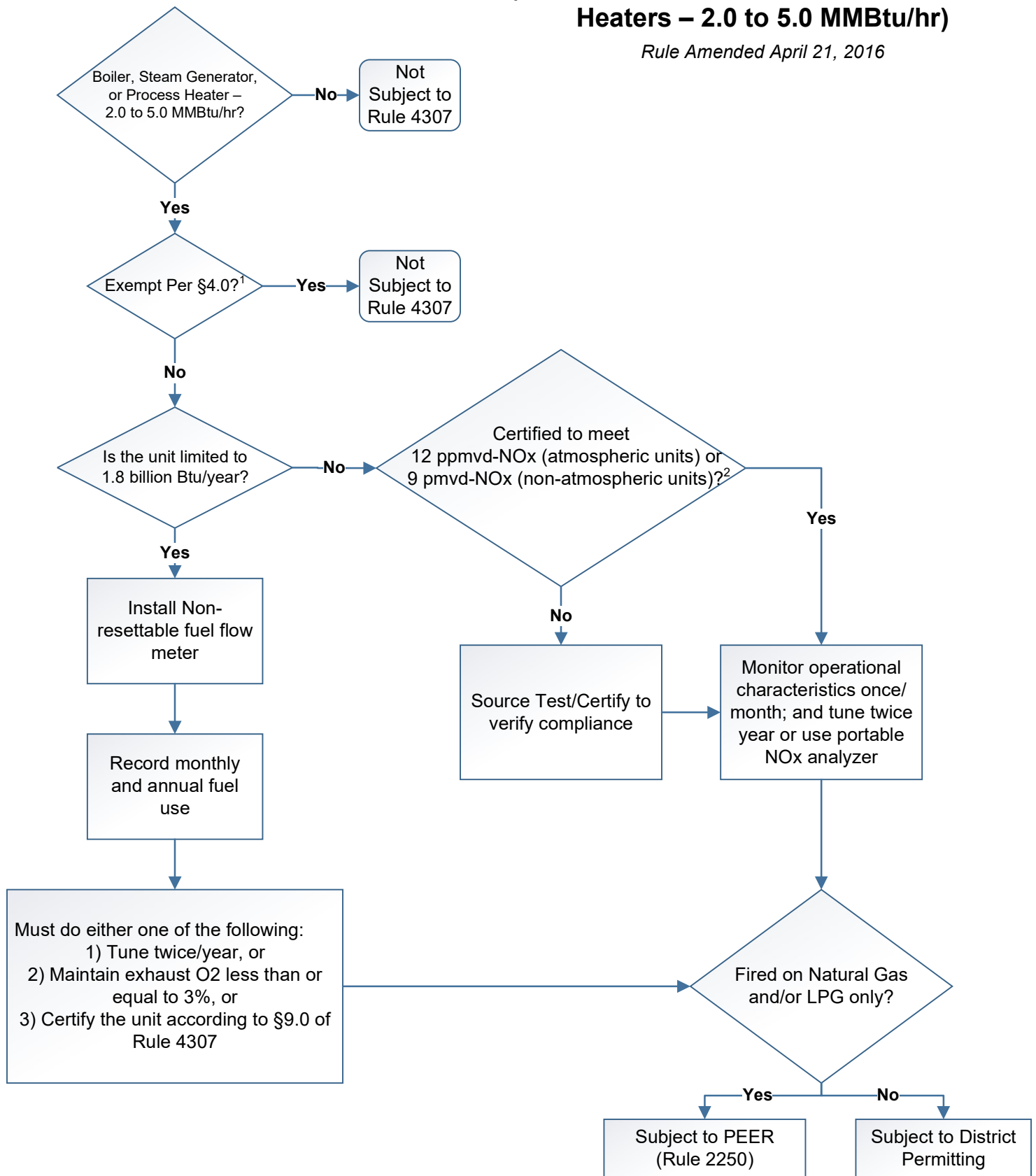


# District Rule 4307 (Boilers, Steam Generators, and Process Heaters – 2.0 to 5.0 MMBtu/hr)

*Rule Amended April 21, 2016*



**Notes:**

<sup>1</sup> Exemptions from §4.0 of Rule 4307: (1) Solid fuel-fired units; (2) Dryers and glass melting furnaces; (3) Direct-fired kilns, humidifiers, and smelters; and (4) Waste heat recovery boilers for combustion turbines or IC engines.

<sup>2</sup> For District certified units, please visit: <https://ww2.valleyair.org/compliance/certified-units-and-certified-retrofit-control-technology/>