



San Joaquin Valley
AIR POLLUTION CONTROL DISTRICT.



AIR TOXICS

2022 Annual Report

March 16, 2023

**SAN JOAQUIN VALLEY AIR POLLUTION CONTROL DISTRICT
GOVERNING BOARD 2022**

CHAIR: VITO CHIESA
Supervisor, Stanislaus County

VICE CHAIR: DEBORAH LEWIS
Councilmember, City of Los Banos

MEMBERS:

DREW M. BESSINGER
Councilmember, City of Clovis

ALVARO PRECIADO
Mayor, City of Avenal

DAVID COUCH
Supervisor, Kern County

ROBERT RICKMAN
Supervisor, San Joaquin County

ROBERT MACAULAY
Supervisor, Madera County

RUSTY ROBINSON
Supervisor, Kings County

BUDDY MENDES
Supervisor, Fresno County

ALEXANDER C. SHERRIFFS, M.D.
Appointed by Governor

TANIA PACHECO-WERNER, PHD
Appointed by Governor

AMY SHUKLIAN
Supervisor, Tulare County

LLOYD PAREIRA
Supervisor, Merced County

VACANT
Large City

VACANT
Small City

EXECUTIVE DIRECTOR/AIR POLLUTION CONTROL OFFICER:

SAMIR SHEIKH

Executive Summary

The San Joaquin Valley Air Pollution Control District (District) is a public health agency whose mission is to improve the health and quality of life for all Valley residents through efficient, effective and entrepreneurial air quality-management strategies. The District has spent nearly three decades implementing and integrating a wide variety of methods reducing toxic air contaminant emissions in the San Joaquin Valley. Based on the latest California Toxics Inventory (CTI) available from CARB, 14% of all air toxics in the Valley are now emitted from stationary sources of pollution under the direct control and regulation of the District, while 52% comes from mobile sources such as cars and trucks, and the remaining 34% is emitted from area-wide sources like road dust, paints, solvents, and other consumer products. Mobile and area-wide sources of emissions are generally under the regulatory authority of the State of California and the federal government.

The District's integrated approach to addressing and reducing risks from toxic air contaminants has taken three main paths: reducing air toxic emissions from existing stationary sources of emissions; preventing the creation of new or modified stationary sources of significant risk; and finding creative and cooperative methods of reducing risk from emissions sources that the District does not typically regulate. This approach has resulted in dramatic reductions in emissions of air toxics from sources in the San Joaquin Valley.

Under Assembly Bill (AB) 2588 (Air Toxics Hot Spots Information and Assessment Act), the District works with facilities to quantify emissions of air toxics, determines the health risk caused by those emissions, reports emissions and any significant risks through written public reports and neighborhood public meetings, and as required, takes steps to reduce such risks. As a result of these ongoing efforts, and the resulting emissions reductions, no Valley facility currently poses a significant risk under this program.

The State's Hot Spots Act, however, is only one part of the District's comprehensive program to regulate air toxics. To achieve maximum efficiency and effectiveness, the District operates an integrated air toxics program that harmonizes local, state, and federal mandates wherever possible.

A number of regulations have also been adopted by the District, the state, and the federal government, and implemented through the District's integrated air toxics program, to directly reduce existing emissions from specific types of facilities and sources of air toxic contaminants. For example, the toxic air contaminant emissions from emissions sources like dry cleaners, chrome platers, gas stations, and diesel internal combustion engines have drastically decreased in the San Joaquin Valley since the implementation of the District's air toxic program.

In addition to the above efforts to minimize emissions, the District also performs comprehensive and conservative toxic emission evaluations and air dispersion modeling before issuing permits to new and modified stationary sources of emissions. This assures the District minimizes the increase those sources add to the existing toxic load and any

potentially significant public health impacts associated with the release of those airborne toxic emissions.

Under its integrated air toxics program, the District has also implemented numerous methods of reducing emissions from mobile sources and other sources of emissions that the District does not have the authority to regulate. For instance, the District developed the first Indirect Source Review rule in the nation, designed to reduce emissions from construction equipment and mobile sources associated with new land use development projects. The District also provides assistance and guidance to the cities and counties in the San Joaquin Valley so that they can be assured that land-use decisions are based on a full understanding of the potential for increasing emissions of air toxics, and new air toxics risks can be avoided. One of the most effective methods of reducing emissions of air toxics from emissions sources not directly regulated by the District has been the incentive grant programs that have leveraged billions of dollars in reducing emissions from diesel internal combustion engines on trucks, tractors and agricultural irrigation operations.

This 2022 Annual Air Toxics Report describes the District's ongoing efforts to regulate and minimize air toxic emissions. An electronic version of this report may be found at: http://www.valleyair.org/busind/pto/air_toxics_annual_reports.htm.

Table of Contents

Summary of Toxic Air Contaminants in the San Joaquin Valley.....	1
Air Toxics Screening Assessment.....	2
Assembly Bill (AB) 617 - Community Air Protection Program	2
Criteria Air Pollutant and Toxics Air Contaminants Reporting Regulation	3
Summary of California’s Air Toxics “Hot Spots” Information and Assessment Act	4
Background.....	4
Assessing the Risk to the Public.....	4
Implementation	4
AB 2588 Evaluation Process	6
CARB’s Updates to AB 2588 Guidance in 2022	9
Air Toxics Hot Spot Assessments Summary.....	10
Preventing Creation of Significant Health Risk.....	11
New or Modified Stationary Source Evaluations	11
Air Toxics “Hot Spots” Information and Assessment Act.....	12
Incentive-Based Programs.....	12
Attainment Plans and Control Strategies	13
Indirect Source Review Rule.....	13
California Environmental Quality Act and Health Risk Assessments	13
Outreach and Education	14
Air Toxics Regulations	14
Air Dispersion Modeling	23
EPA Regulatory Model (AERMOD).....	23
Meteorological Data	24
Appendix A. Facilities Assessed under AB 2588 in 2022	A-1
Appendix B. Toxics Emissions Summary	B-1
Appendix C. AB 2588 District Implementation Flow Chart	C-1
Appendix D. Current Status of NESHAP Delegation.....	D-1

Summary of Toxic Air Contaminants in the San Joaquin Valley

The United States Environmental Protection Agency (EPA) and the California Air Resources Board (CARB) have identified over 700 substances that are emitted into the air that may affect human health. Some of these substances are considered to be carcinogens, while others are known to have short-term acute or long-term chronic health impacts. As part of ongoing efforts to identify and assess potential health risks to the public, the District has collected and compiled air toxics emissions data from industrial and commercial sources of air pollution throughout the Valley. The State has developed similar inventories for mobile sources of air pollution. These District and State inventories have been combined into the CARB's California Toxic Inventory (CTI), which provides the latest emission estimates available for hazardous air pollutants of concern from all sources. A summary of the latest available CTI data for key pollutants is presented in Table 1 below.

Table 1. Primary San Joaquin Valley Hazardous Air Pollutant Emissions

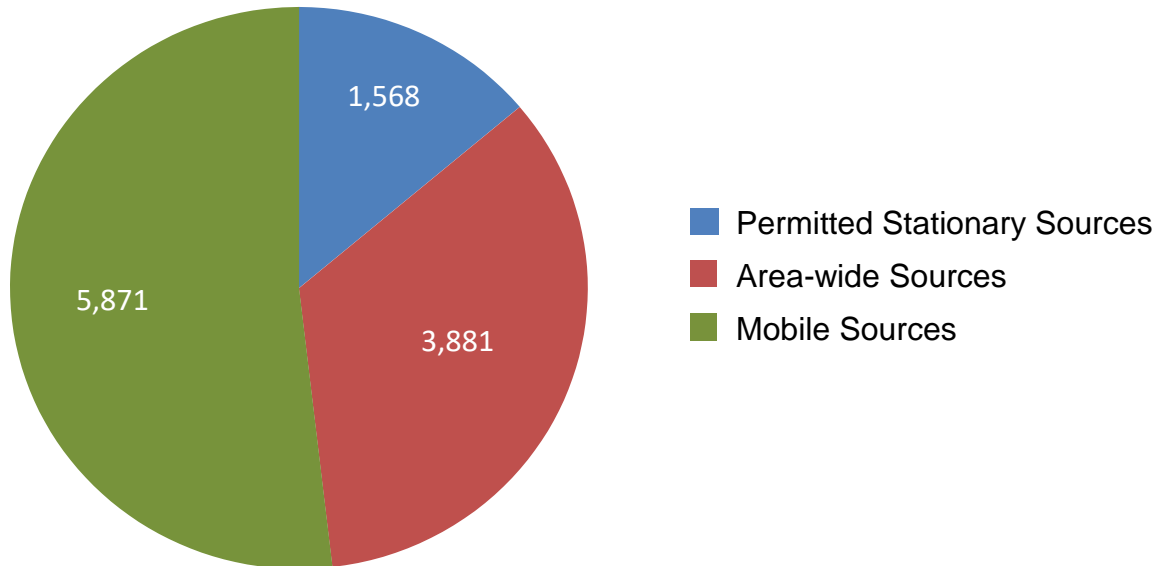
Pollutant	Inventory (tons/yr)
Acetaldehyde	3,512
Diesel Particulate Matter	2,520
Formaldehyde	2,318
Benzene	1,020
Perchloroethylene	448
1,3-Butadiene	269
Methylene Chloride	247
p-Dichlorobenzene	130
Carbon Tetrachloride	0
Chromium, Hexavalent	0

A more detailed summary of CTI emission estimates for the San Joaquin Valley is provided in Table B1 in Appendix B.

Toxic Air Contaminants (TACs), otherwise known as air toxics, are emitted from mobile sources (e.g., cars, trucks, buses, tractors, etc.), which are primarily regulated by the State and EPA; area sources (e.g., consumer products), which are regulated by the State, EPA, and the District; and from stationary sources regulated primarily by the District. Figure 1 below shows a comparison of mobile, area, and stationary source emissions of hazardous air pollutants in the San Joaquin Valley. Of these sources, approximately 86% of hazardous air pollutant emissions occurring in the Valley are from mobile sources and area sources.

Stationary sources include point source emissions provided by facility operators and/or air districts and aggregated point source emissions estimated by CARB and/or air districts. This stationary source information is included in the CTI pursuant to the Air Toxics "Hot Spots" Act of 1987 (AB 2588). Area-wide sources are those that emit over an unspecified area. This could include paved roads, unpaved roads, or consumer product emitting sources.

Figure 1. Mobile, Area-wide, and Stationary Source Air Toxics Emissions (tons) in the San Joaquin Valley



Air Toxics Screening Assessment

EPA's Air Toxics Screening Assessment (AirToxScreen), formerly known as The National Air Toxics Assessment (NATA), is a screening tool to provide communities with information about health risks from air toxics. AirToxScreen is part of EPA's approach to air toxics that provides updated data and risk analyses on an annual basis, helping state, local and tribal air agencies, EPA, and the public more easily identify existing and emerging air toxics issues. State and air district toxic emissions inventory data are compiled to create a national emissions inventory of air toxic sources, which is used by EPA to generate the AirToxScreen Mapping Tool. The AirToxScreen Mapping Tool can be found at: <https://www.epa.gov/AirToxScreen/airtoxscreen-mapping-tool>.

Assembly Bill (AB) 617 - Community Air Protection Program

The implementation of AB 617 (C. Garcia, 2017) has brought additional clean air resources and strategies to Valley communities. Despite the significant reductions in emissions of criteria and toxic air pollutants that have already been achieved across the Valley, there remain many Valley communities that are disproportionately burdened by the cumulative

effects of various environmental and socioeconomic factors. AB 617 requires the expedited implementation of advanced control technologies for existing stationary source facilities; development and implementation of community-specific air quality monitoring networks; development and implementation of community emission reduction programs; enhanced reporting of facility emissions inventory data, and the creation of publically accessible online clearinghouses of emission control technology determinations. Resources available through this legislation have allowed the District and Community Steering Committees, through a comprehensive public outreach and community engagement process, to develop programs for community protection and develop a robust plan for reducing local exposure to fine particulate matter and toxic air contaminants in Valley communities.

Criteria Air Pollutant and Toxics Air Contaminants Reporting Regulation

AB 617 requires CARB to develop a uniform statewide system of annual reporting of emissions of criteria air pollutants and toxic air contaminants for certain categories of stationary sources. The bill requires stationary sources to report their annual emissions of criteria air pollutants and toxic air contaminants. In order to implement these reporting requirements, CARB developed the "Regulation for the Reporting of Criteria Air Pollutants and Toxic Air Contaminants" (CTR) to implement statewide annual reporting of criteria air pollutant and toxic air contaminant emissions data from facilities, and was adopted in support of mandates under AB 617, AB 197, and AB 2588. For Valley permitted facilities, the District will implement this regulation on behalf of the state through the District's existing annual emission inventory and air toxics processes. Emissions inventory data is critical to understanding the sources of emissions that may contribute to adverse health risks or other impacts at the local, regional, and statewide level. In 2022, 221 facilities were required to report their criteria and toxic emissions under the CTR regulation for the 2021 inventory reporting year. Facility emissions reported under CTR regulation are visualized in CARB's Pollution Mapping tool. The tool provides an interactive platform where users can select facilities by name, location, or industrial sector; view their reported emissions using maps, charts and tabular formats; and download data. It can be found at: https://ww3.arb.ca.gov/ei/tools/pollution_map/.

Summary of California's Air Toxics "Hot Spots" Information and Assessment Act

Background

The *Air Toxics "Hot Spots" Information and Assessment Act* (AB 2588, 1987, Connelly) was enacted in September 1987 and later strengthened in 1992. Under this act, stationary sources are required to report the types and quantities of certain toxic substances their facilities routinely release into the air. The goals of AB 2588 are:

- to identify Valley facilities that release toxic air contaminants as a result of their day to day operations
- to collect and quantify emission data
- to identify facilities causing localized impacts
- to determine facility-wide health risks
- to notify nearby residents and businesses of significant risk facilities in their vicinity
- to require that significant-risk facilities reduce their risks below the level of significance in accordance with the provisions of the "Emissions Inventory Criteria and Guidelines Report" adopted by the Air Resources Board

The District's implementation of AB 2588 has minimized health risks to the public associated with the release of air toxic emission from sources located within the San Joaquin Valley. Under this right-to-know law, the District has worked with facilities to quantify air toxic emissions, determine the potential health risk associated with those emissions, and report any risk determined to be significant by the District through written public reports and neighborhood public meetings. A flowchart summarizing the AB 2588 implementation process is provided in Appendix C.

Assessing the Risk to the Public

The State Air Toxics "Hot Spots" Act requires the District to compile an inventory of toxic emissions from Valley facilities, prioritize facilities for health risk, evaluate public health risks for facilities ranked as high priority, and notify individuals who may be impacted by any significant health risks. Although Hot Spots is primarily a public right-to-know and notification program, the public awareness achieved through the Hot Spots program has led many Valley businesses to voluntarily reduce their toxic emissions to ease community concerns.

Implementation

The District utilizes the applicability criteria outlined in CARB's Emission Inventory Criteria and Guidelines Regulation (EICGR) to determine which facilities are evaluated under the program. Facilities are subject to quantifying and reporting their toxic emissions if one or more of the criteria below is met:

- Emit 10 or more tons per year of criteria pollutants (particulate matter, oxides of nitrogen, oxides of sulfur, or organic gasses)
- Emit less than 10 tons per year of criteria pollutants, but meet one or more of the classes listed in Appendix E of the EICGR
- Emit toxic substances that have been added to Appendix A of the EICGR
- Emit toxic substances that have new health risk values published by the state's Office of Environmental Health Hazard Assessment (OEHHA)

The risk evaluation processes were revised in 2015 as the District implemented the state Office of Environmental Health Hazard Assessment's (OEHHA's) revised *Guidance on Preparation of Health Risk Assessments* that was adopted by OEHHA in early March 2015. The District's health risk assessment processes and policies were updated accordingly and implemented July 1, 2015. This revised guidance was designed to incorporate the Governing Board's guidance to implement OEHHA's revisions to provide enhanced protection of children, and the public overall, while preventing unreasonable restrictions on permitting actions.

OEHHA's revised guidance has been incorporated into the District's implementation of the AB 2588 Hot Spots Program. Since the calculated health risk under the new methodologies is higher than previous estimates, Valley facilities are being reassessed under AB 2588. Under this health risk reassessment process, facilities are first evaluated to determine applicability to the Air Toxics "Hot Spots" program. Facilities determined to be subject to the Air Toxics "Hot Spots" program are required to prepare a Toxic Emission Inventory Plan (Plan) and a Toxic Emission Inventory Report (Report) in order to provide site-specific inventories of air emissions of toxic substances.

In 2016, the District began the outreach and reassessment of facilities by following the phased processing schedule outlined in AB 2588, which was originally implemented in the late 80's and early 90's. AB 2588 subjected three major categories (or phases) of facilities to the regulation based upon their level of annual emissions. The AB 2588 regulation also allows for "Industry-wide" toxics emissions inventory, which consist of facilities that are small businesses where emissions can be generally characterized such as gasoline dispensing facilities, auto body coating facilities, etc. These industry-wide facilities are being addressed under the fourth assessment phase. Similar to industry-wide facilities, small single source facilities, such those with only diesel internal combustion engines (DICE), are also being assessed in the fourth phase of the implementation schedule. The following summary outlines each phase within the District's implementation plan:

First phase:	Phase I Facilities (≥ 25 tons emissions per year)
Second phase:	Phase II Facilities ($10 \leq$ tons emissions per year < 25)
Third phase:	Phase III Facilities (< 10 tons emissions per year)
Fourth phase:	Phase IV Facilities (Industry-wide such as Gas Stations, Auto Body Shops, etc.; DICE only, Ag facilities)

AB 2588 Evaluation Process

Toxic Emission Inventory Plans and Reports

Under this act, facilities are required to prepare Toxic Emission Inventory Plans and Reports to develop site-specific inventories of air emissions from toxic substances. Plans provide an outline and methodology for calculating toxic emissions for all permitted and non-permitted stationary sources operated at the facility. This is reviewed and approved by the District prior to emission quantification. Reports include calculations of facility's toxic emissions using site-specific process rates and emission factors in order to perform a "Prioritization" of the facility's air toxic emissions.

Prioritization

AB 2588 requires air districts to prioritize facilities to determine a facility's status within the program. In establishing priorities, the air districts are to consider the potency, toxicity, quantity, and volume of hazardous materials released from the facility, the proximity of the facility to potential receptors, and any other factors that the district determines may indicate that the facility may pose a significant health risk. The District uses the prioritization methodology outlined in the California Air Pollution Control Officers Association (CAPCOA) *Facility Prioritization Guidelines* to prioritize facilities under AB 2588. Utilizing the facility's approved Plan and Report, a facility's priority status is determined using the prioritization thresholds listed in District Policy APR 1906, as identified in Table 2 below.

Table 2: AB 2588 Prioritization Thresholds and Categories

Prioritization Thresholds	Priority Category	Category Requirements
≤ 1	Low Priority	Facility is conditionally exempt from further AB 2588 requirements
>1 and ≤ 10	Intermediate Priority	Facility is required to provide an update summary on a quadrennial basis
> 10	High Priority	Facility is required to perform a Health Risk Assessment

Health Risk Assessment

Facilities that classify as "High" priority are required to perform a Health Risk Assessment (HRA) to determine whether its toxic emissions are expected to pose a significant risk to nearby residents and workers. Under AB 2588, the District and the Office of Environmental Health Hazard Assessment's (OEHHA) review each HRA. HRAs performed under the program are required to use the methodologies and procedures outlined in District guidelines and OEHHA's 2015 Air Toxic Hot Spots Program "*Guidance Manual for Preparation of Health Risk Assessments*". A facility's status under the program is determined using established health risk thresholds as identified in Table 3 below:

Table 3: AB 2588 Health Risk Assessment Thresholds

Health Risk Thresholds	Risk Category	Category Requirements
Cancer risk < 1 in a million, and Total hazard index of < 0.1	Low Risk	Facility is conditionally exempt from further AB 2588 requirements
1 ≤ Cancer risk <10 in a million, or 0.1 ≤ Total hazard index ≤ 1.0	Intermediate Risk	Facility is required to provide an update summary on a quadrennial basis
Cancer risk ≥ 10 in a million, or Total hazard index of > 1.0	High Risk	Facility is required to go through the public notification process
Cancer risk > 100 in a million, or Total hazard index of > 5.0	Risk Reduction	Facility is required to go through the public notification process and prepare a Risk Reduction Plan

Public Notification

Facilities that are determined to be high risk to nearby residents or workers are required to notify those exposed persons, through the District's Public Notification process. This process allows the District to inform the public of their potential exposure to toxic substances routinely released into the air from facilities and the potential health risks associated with those exposures. Additionally, this process allows any public questions or concerns regarding exposure and health risk associated with the facility's toxic emissions to be heard and discussed. As of 2022, no District permitted facilities have been determined to pose risks in excess of these public notification levels.

Risk Reduction Audit and Plan

Facilities that pose health risks above District action levels are required to submit risk reduction audits and plans (RRAP) to reduce their risk. The District's review of completeness of any facility RRAP includes a substantive analysis of the emission reduction measures included in the plan, and the ability of those measures to achieve emission reduction goals as quickly as feasible. If the District determines that the RRAP does not meet those requirements, the District shall return the audit and plan to the facility to remedy the deficiencies identified by the District. No District permitted facilities have been determined to pose risks in excess of the risk reduction action levels.

Update Summary Facilities

Intermediate Priority and Intermediate Risk facilities are subject to the regulation's Update Summary reporting process. At least once every four years, these facilities must provide their annual activity and resulting emissions inventory in order to provide the District with updated facility information and to determine whether any operational changes at the facility have the potential to affect the facility's health risk status under the program. Operational changes could consist of increasing process rates, or by operating new or modified stationary sources at the facility. However, it is important to note that changes to the facility that require a District permit or permit modification must be approved by the District prior to being implemented. Based on the information submittal, the District determines if an updated AB 2588 assessment is required.

Industry-wide and Small Single Source Facilities

Under the state's regulation, common types of smaller commercial facilities where the air toxics emissions from individual facilities can easily and generically be characterized and calculated, qualify for a more streamlined assessment process referred to as "industry-wide". These facility industry-wide classes include gasoline dispensing facilities, dry cleaning operations, and automotive coating facilities.

Similar in concept to the industry-wide facilities, smaller operations operating only a single type of emission unit, cannot qualify as industry-wide, and where the emissions can easily and generically be characterized and calculated, qualify for a more streamlined assessment process referred to as "small single source" facilities. Small single sources include facilities only operating a diesel-fired emergency IC engine.

CARB's Updates to AB 2588 Guidance in 2022

2022 Amendments to the Emission Inventory Criteria and Guidelines Regulation

Amendments were made to the Emission Inventory Criteria and Guidelines Regulation (EICGR) and approved by the Office of Administrative Law on March 21, 2022. CARB amended the EICGR to collect more comprehensive emission data across the state. The primary amendments to the EICGR include:

- Updated reporting requirements for diesel engines
- Added factors in determining facility exemptions, reinstatements, and update reporting provisions
- Increased the number of reportable substances in Appendix A from approximately 700 to over 1,700 substances
- Established a phase-in schedule for evaluating newly added substances, consistent with the CTR Regulation's emissions inventory schedule
- Added new source test requirements for certain source types

2022 Gasoline Service Station Industrywide Risk Assessment Guidance

To assist air districts in assessing Gasoline Dispensing Facilities (GDF) as required under AB 2588, CARB and California Air Pollution Control Officers Association (CAPCOA) prepared an updated standardized Gasoline Service Station Industrywide Risk Assessment Guidance in 2022. This guidance provides a framework for air districts to use when evaluating the public health risks from GDFs. This guidance replaces the 1997 Gasoline Service Station Industrywide Risk Assessment Guidelines that was previously used by air districts for their health risk evaluations. Changes in the 2022 technical guidance include new health risk methodologies, updated emission factors for gas stations, and new information on the toxic chemicals in gasoline. Due to the significant changes in the methodology and the state-wide effort to evaluate GDFs under AB 2588, in 2022 the District expeditiously evaluated the Valley's permitted GDF facilities (approximately 1,500 facilities).

Air Toxics Hot Spot Assessments Summary

The District has finalized 6,926 AB 2588 facility assessments from 2016 - 2022. Table 4 below identifies the number of facilities assessed in 2022 through a prioritization analysis (after completion of a Plan and Report), applicability exemption determination, or a health risk assessment (after completion of a prioritization).

Table 4: Summary of Facilities Assessed Under AB 2588 in 2022

AB 2588 Category	Number of Facilities Assessed in 2022
Low/Exempt Priority	938
Low/Exempt Risk	3
Intermediate Priority	646
Intermediate Risk	18
High Priority	8
High Risk	0
Total	1,613

Of the facilities evaluated under AB 2588 in 2022, approximately 1,500 were GDFs evaluated under CARB and CAPCOA's updated standardized Gasoline Service Station Industry-wide Risk Assessment Guidance that was finalized in 2022. A detailed list of the facilities evaluated in 2022 and their current status under AB 2588 can be found in Appendix A.

Preventing Creation of Significant Health Risk

The overall goal of the District's integrated approach to air toxics emissions in the San Joaquin Valley aims to maximize public health improvements and minimize public exposure to air toxic emissions. The integrated air toxics program assists in preventing, minimizing, and reducing health risks through a variety of programs.



New or Modified Stationary Source Evaluations

One goal of District risk management review efforts is to minimize the increase that new and modified stationary sources add to the existing toxic load and any potentially significant public health impacts associated with the release of those airborne toxic emissions. In order to achieve this goal, the District evaluates the health risk of stationary sources as part of the District's permitting process and engineering evaluation.

Under the District's risk management policy, Toxic Best Available Control Technology must be applied to all units that may pose greater than de minimis levels of risk (i.e., a cancer risk greater than one in one million). Projects that would pose significant impacts to nearby residences or businesses (i.e., by causing an increased cumulative facility cancer risk of 20-in-a-million or greater) are not approvable. When a project is determined not to be approvable as proposed, District staff will work with the applicant to find approvable low-risk alternatives, such as installing air toxic emissions control devices or limiting the operation of the proposed equipment. Under this program, the District has performed over 16,000 Risk Management Reviews for facilities throughout the District. As a consequence, no permit for a new or modified operation has been approved since the program was initiated in 1995 that would have created a significant health impact through increases in air toxic emissions.

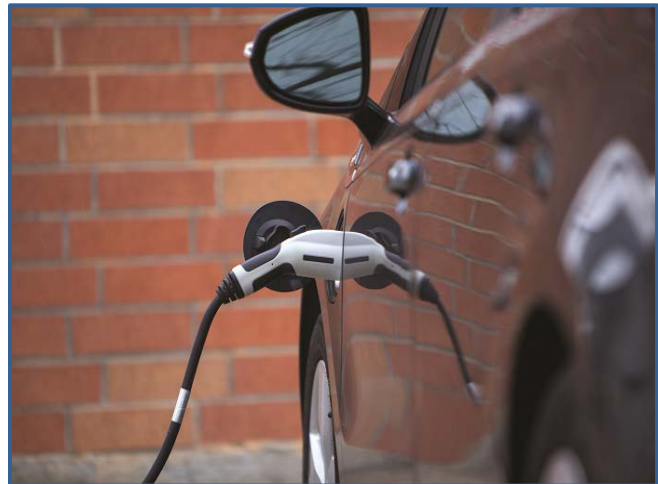
Air Toxics “Hot Spots” Information and Assessment Act

As noted earlier in this report, this law is designed to provide information on the extent of emissions from existing stationary sources and the potential public health impacts of those emissions. Facilities are required to calculate and report to the District their actual emissions of air toxic emissions. “Significant Risk” facilities must disclose their impacts to the nearby residents that may be impacted. Facilities that exceed a higher risk reduction action threshold must go even further and reduce emissions of air toxics. No Valley facility currently poses a significant risk under the “Hot Spots” program, while at the beginning of the implementation of the program, in 1989, 16 facilities were classified “Significant Risk Facilities.” As discussed above, the District has begun a significant risk reassessment process that incorporates the revised OEHHA guidance.

Incentive-Based Programs

To assist in reducing airtoxic emissions throughout the Valley, more than \$5 billion in public and private funding has been invested in clean-air projects through the District’s voluntary incentive programs. In total, these programs have reduced more than 240,000 tons of harmful emissions. For example, more than 30,800 older, high-polluting heavy-duty diesel engines have been replaced with zero emission electric motors or cleaner burning engines equipped with the latest in emission control technology. These replacements have resulted in the reduction of nearly 17,000 total tons of carcinogenic diesel particulate matter emissions. In addition, the District’s voluntary incentive programs provide critical funding to replace old, higher-polluting school buses, light-duty passenger vehicles, residential wood burning devices, and numerous others. Through the District’s first-of-its-kind Ag Burn Alternatives Grant program, the District provides funding to support the Valley’s ongoing phase-out of agricultural open burning and the development of innovative alternatives to open burning.

In 2017, AB 617 initiated a statewide effort to monitor and reduce localized air pollution, and highly improve public health, in communities that experience disproportionate burdens from exposure to air pollutants through new community-focused and community-driven actions. The communities of Shafter, South Central Fresno, Stockton and Arvin/Lamont were selected to receive clean air resources available under AB 617 through the Community Air Protection Program. This program includes a substantial investment of



community-level funding through a wide variety of voluntary incentive funding measures, including the Tune-In & Tune-Up program and the Fireplace & Woodstove Change-Out Program. The Tune-In & Tune-Up program provides incentives for primarily low-income

District residents to perform much-needed smog related repairs to their personal vehicles. In some cases, the District is even able to offer greater incentives for residents to replace their old, high polluting vehicle with a much cleaner and much newer vehicle. Through the Fireplace & Woodstove Change-Out Program, the District is able to provide funding for District residents to replace, older, high polluting residential wood burning devices with new, clean burning devices or natural gas inserts. Through this program, the District offers a higher incentive for the District's low-income population.

Attainment Plans and Control Strategies

Within the District's *2018 PM_{2.5} Plan*, the District prioritized strategies achieving the greatest public health benefits while satisfying applicable attainment planning requirements. The District also analyzed the health benefits that would result from implementation of the plan. Several examples of prioritized control strategies included in the *2018 PM_{2.5} Plan* include new measures to further reduce emissions from commercial cooking (Rule 4692) and residential wood burning (Rule 4901). These measures will reduce some of the most harmful types of particulate matter when and where those reductions are most needed in urban, highly populated areas. The District has prioritized commitments to strengthen these programs due to the significant and well-researched public health benefits.

Indirect Source Review Rule

The District's Indirect Source Review (ISR) rule, in place since 2005, achieves combustion-related NO_x and PM₁₀ emission reductions from the construction and operation of new development projects through the incorporation of design features and on-site mitigation measures. The focus of these emissions reductions are from mobile source heavy duty off-road diesel equipment and heavy duty on-road diesel trucks, which emit diesel particulate matter, one of the most potent carcinogens.

California Environmental Quality Act and Health Risk Assessments

The California Environmental Quality Act (CEQA) requires public agencies to evaluate environmental impacts from a development project and all feasible alternatives or mitigation measures that can substantially reduce or avoid those impacts. Generally, the main responsibility for satisfying CEQA requirements, or "lead agency" role, falls under the responsibility of city or county planning agencies.

From a health risk perspective, land use decisions are critical to improving and preventing degradation of air quality within the San Joaquin Valley, as land use patterns greatly influence potential exposure of sensitive receptors to sources of air pollution. Under CEQA, land use agencies must evaluate the potential significance of health risks associated with development projects. The District provides support to land use agencies when making air quality impact determinations by assisting in the review of health risk assessments performed for the project.

Outreach and Education

As we move forward in achieving our mission, the District shall continue its ongoing efforts to educate the public about air quality, and the significant clean air investments and air quality progress that have been made in the Valley.

The District's information and educational programs include the Real-Time Air Quality Advisory Network (RAAN), Web-based Archived Air Quality (WAAQ) System, and Healthy Air Living Schools program.

RAAN uses real-time data from air monitoring stations throughout the Valley to provide hour-by-hour air quality updates to schools and other subscribers. WAAQS was implemented in 2015 and takes RAAN a step further by providing neighborhood-by-neighborhood historical air quality data for any address in the Valley air basin. Valley residents can use this information to make informed decisions and plan outdoor activities for times with the best air quality, reducing potential air quality health risks. As a high priority area of focus, the District has continued working to expand the Healthy Air Living Schools initiative to deliver an extensive set of tools and information, including the recent launch of school-based Real-Time Electronic Air-quality Displays (READ), to enable Valley schools to understand and respond to air quality conditions and protect the health of students.



Air Toxics Regulations

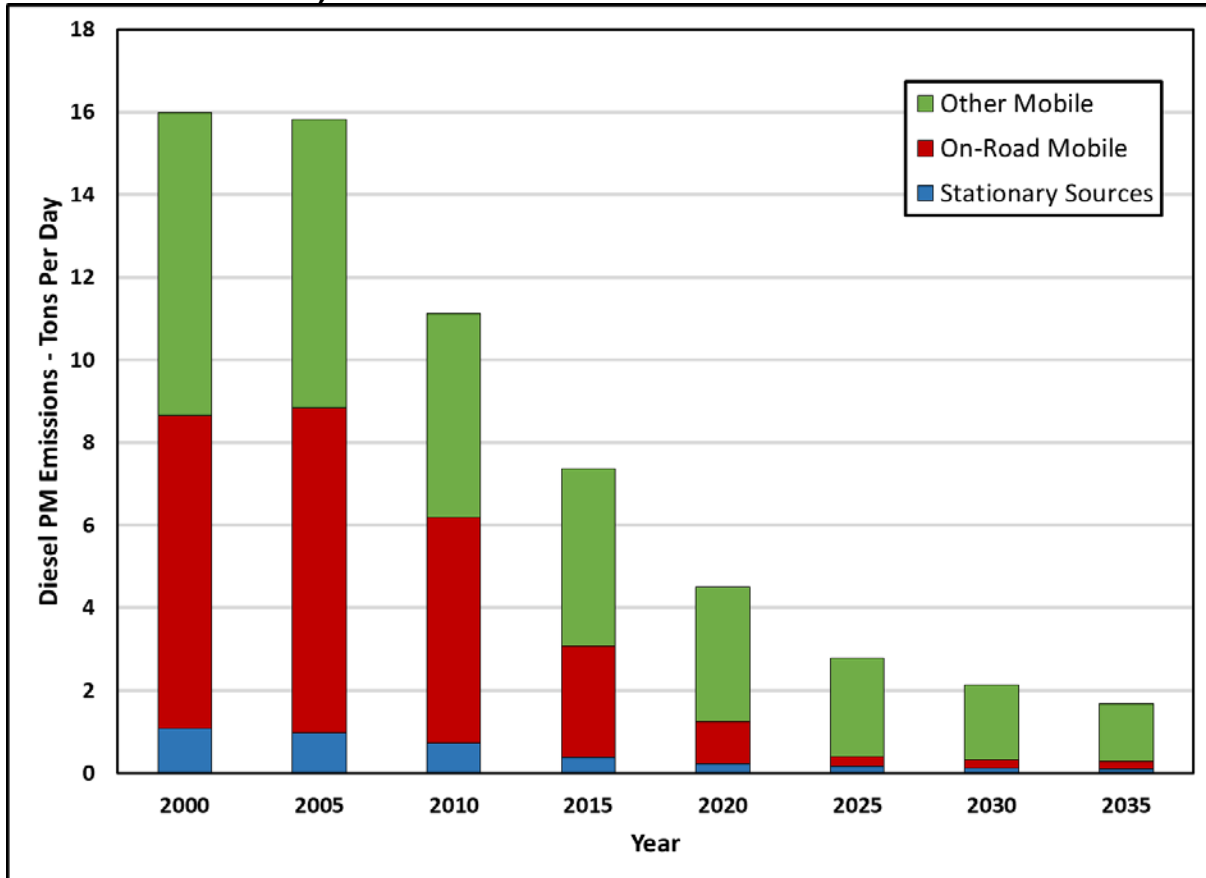
In addition, the District implements a variety of state, federal, and District rules reducing and regulating the emissions of toxic air pollutants. Such regulations have generated significant reductions in air toxics from a wide variety of sources, from requiring the gradual phase-out of perchloroethylene used at dry cleaners and mandating emissions controls at chrome platers, to a large number of rules aimed at reducing particulate emissions from diesel internal combustion engines.

Due to this diverse set of risk reduction efforts, approximately 14% of all air toxics in the San Joaquin Valley are now emitted from stationary sources of pollution under the direct control and regulation of the District, while 52% comes from mobile sources such as cars and trucks, and the remaining 34% is emitted from area-wide sources like road dust, paints, solvents, and other consumer products (per CTI). Mobile and area-wide sources of emissions are generally under the regulatory authority of the State of California and the federal government.

Diesel Exhaust Risk Reduction

CARB identified particulate matter emissions from diesel-fueled engines as a toxic air contaminant with the potential to pose a significant cancer risk to the public. Historically the cancer risk from the exhaust of diesel internal combustion engines has been determined to be far higher than the estimated cancer risk from all other sources of air pollution combined. Because of the high level of risk associated with diesel exhaust, and because of the prevalence of the engines, the State chose not to address diesel exhaust using the existing risk management guidance. Instead, the State decided to establish an advisory committee of interested parties, and developed a comprehensive risk management plan that would result in significant reductions in emissions of diesel particulate matter. CARB adopted the Risk Reduction Plan to Reduce Particulate Matter Emissions from mobile and stationary Diesel-fueled Engines. The figure below shows the trend and forecast of diesel PM emissions in the San Joaquin Valley through the year 2035.

Figure 2. Diesel PM Emissions Trend, San Joaquin Valley (CARB CEPAM Database 2019 v1.04)



Several of the following Air Toxic Control Measures (ATCMs) were developed as a part of ARB's diesel exhaust risk reduction efforts, which continue to be developed. Related information is available on CARB's ATCM website at:

<https://ww2.arb.ca.gov/resources/documents/airborne-toxic-control-measures>.

ATCM Portable Diesel-Fueled Engines

The purpose of the CARB adopted Portable Diesel ATCM is to protect public health by controlling particulate matter (PM) emissions from diesel fueled portable engines rated at 50 horsepower and greater operating in California. All existing portable diesel engines were required to be certified by January 1, 2010, and all new portable engines were required to meet the latest certification standards. In addition, the ATCM contains stringent diesel PM fleet standards that apply after 2010.

The latest version of the ATCM became effective on November 30, 2018 and contains stringent emissions standards and operational requirements that impact new and existing portable diesel engines. The District has been implementing the requirements of the Portable ATCM in the review of applications for District Portable Registrations and permits for portable diesel engines. This ATCM is expected to continue to result in a substantial reduction in Valley diesel PM emissions over the next several years.

ATCM Stationary Diesel-Fueled Engines

The purpose of the CARB adopted Stationary Diesel ATCM is to protect public health by controlling particulate matter (PM) and criteria pollutant emissions from stationary diesel fueled portable engines rated at 50 horsepower and greater operating in California.

This ATCM is satisfied via Rule 4702 (Internal Combustion Engines) in combination with the District's permitting or Permit-Exempt Equipment Registration (PEER) program. These District programs have collectively been found by the CARB to be equivalent to the Stationary ATCM for stationary agricultural engines. This ATCM and District Rule 4702 are expected to continue to result in a substantial reduction in Valley diesel PM emissions over the next several years.

CARB Control Measure for In Use Off-road Diesel Vehicle Rule

The purpose of the CARB adopted an off-road diesel vehicle rule is to reduce diesel PM and oxides of nitrogen (NO_x) emissions from in-use (existing) off-road heavy-duty diesel vehicles. The regulation applies to self-propelled diesel-fueled vehicles that cannot be registered and licensed to drive on-road. Examples include loaders, crawler tractors, skid steers, backhoes, forklifts, and airport ground support equipment. Vehicles with engines less than 25 horsepower are exempt. The regulation is expected to reduce diesel exhaust emissions by over 1,600 tons per year statewide between 2010 and 2030.

Diesel Particulate Matter Control Measure for On-road Heavy-duty Diesel-fueled Vehicles Owned or Operated by Public Agencies and Utilities

The purpose of the CARB adopted control measure will reduce emissions from on-road heavy duty vehicles over several deadlines, with the first groups of vehicles required to be in compliance by December 31, 2007. This control measure is particularly effective because it reduces diesel PM emissions in the heart of residential communities where municipal and utility vehicles frequently conduct business, and where the public is significantly impacted by diesel PM emissions.

ATCM to Limit Diesel-Fueled Commercial Motor Vehicle Idling

CARB initially adopted an ATCM to reduce emissions of toxics and criteria pollutants by limiting idling of new and in-use sleeper berth-equipped diesel trucks. The emission performance requirements require technologies used as alternatives to idling the truck's main engine. The new engine requirements required 2008 and newer model year heavy-duty diesel engines to be equipped with non-programmable engine shutdown systems that automatically shut down the engine after five minutes of idling or, alternatively, meet a more stringent NO_x idling emission standard. Beginning January 1, 2008, in-use truck requirements require operators of both in-state and out-of-state registered sleeper berth equipped trucks to manually shut down their engine when idling more than five minutes at any location within California. Each year heavy-duty diesel truck idling contributes to hundreds of pounds of PM as well as other pollutants to the Valley. The District Incentive Program has subsidized truck stop support equipment to reduce diesel truck idling along the main goods movement corridors. Tests conducted by the District and CARB have determined that an idling truck can consume up to a gallon of diesel fuel an hour. The idling of heavy-duty trucks, at the time of delivery, represents a high percentage of emissions around developed areas in the Valley.

ATCM for Transport Refrigeration Units

The purpose of the CARB adopted ATCM is to reduce emissions of diesel PM from Transport Refrigeration Units (TRUs). TRUs are refrigeration systems powered by diesel internal combustion engines designed to refrigerate or heat perishable products that are transported in various containers, including semi-trailers, truck vans, shipping containers, and rail cars. Although TRU engines are relatively small, ranging from 9 to 36 horsepower, significant numbers of these engines congregate at distribution centers, truck stops, and other facilities, resulting in the potential for health risks to those that live and work nearby. CARB estimated that diesel PM emissions from TRUs will be reduced by 83% by 2040. CARB has recently developed amendments to this ATCM. Related information is available on their TRU ATCM website at <https://ww2.arb.ca.gov/our-work/programs/transport-refrigeration-unit>.

ATCM for Hexavalent Chromium for Decorative and Hard Chrome Plating and Chromic Acid Anodizing Facilities

The purpose of the CARB adopted ATCM is to established new, more stringent emission limitations that depend upon size and nearness to sensitive receptors, limited the use of chemical fume suppressants, and adopted new housekeeping, education, monitoring, recordkeeping, and reporting requirements. The District chose to implement this ATCM by revising Rule 7011 to incorporate the revised ATCM by reference. The District also required submission of a compliance plan and applications for Authorities to Construct (ATCs). A compliance workshop was held on November 17, 2007 to assist facility owners and operators in complying with the ATCM. The District's Governing Board adopted the rule on January 17, 2008.

CARB has recently begun a process to amend the ATCM to establish enhanced best management practices (e.g. building enclosures, limits, source testing, etc.) for all chrome plating facilities using hexavalent chrome. On November 29, 2022, CARB released a staff

report with the initial statement of reasons for the proposed amendments, with the stated goal of eliminating toxic hexavalent chromium emissions from the chrome plating industry in California over time. The amendments propose phasing out the use of hexavalent chromium from chrome plating operations for all new chrome plating facilities in California as early as January 2024. Subsequently, CARB staff presented the proposed amendments as a Board item during a public hearing in January of 2023. The hearing was the first of two hearings for the proposed amendments, the second hearing scheduled for a later date, at which time the chrome plating ATCM amendments will be voted on for approval.

There are numerous expected benefits from the proposed amendments, including eliminating hexavalent chromium emissions from California's chrome plating industry, reducing the potential cancer risk to individual residents and off-site workers near chrome plating facilities, and reducing occupational exposures for on-site workers.

ATCM for Perchloroethylene Emissions from Dry Cleaning Operations

The purpose of the CARB adopted ATCM is to phase out the use of perc dry cleaning machines and related equipment by January 1, 2023. In addition, the amendments will put in place revisions to the Curriculum for the Environmental Training Program for Perc Dry Cleaning Operations (Training Curriculum). There were changes to the operational requirements for dry cleaners as well. For example, the revised ATCM requires that owners/operators maintain a spare set of gaskets on-site. Also, the trained operator must now be on-site whenever the machine is operated. These amendments became effective upon final approval by the Office of Administrative Law on December 27, 2007. The District adopted the revised ATCM in 2008 by reference.

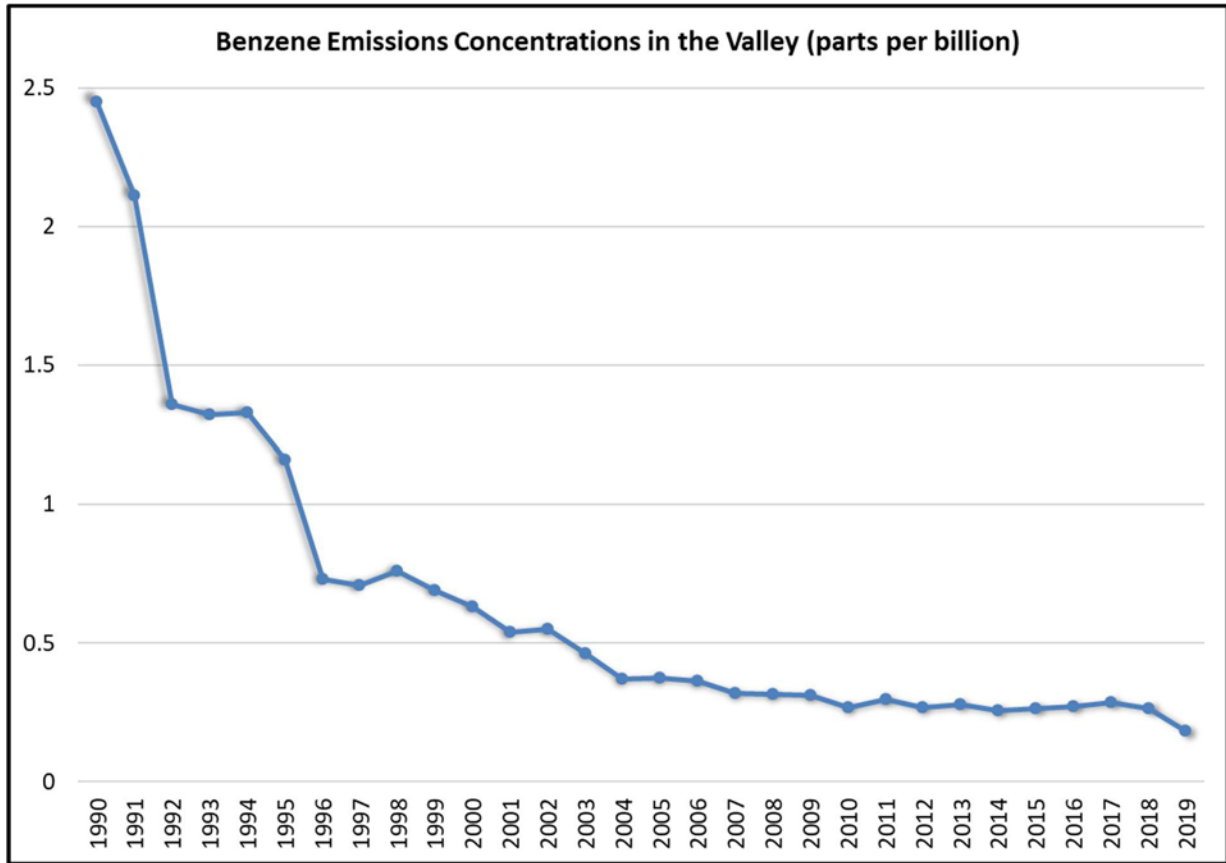
ATCM for Composite Wood Products

The purpose of the CARB approved ATCM is to reduce formaldehyde emissions from composite wood products including hardwood plywood, particleboard, medium density fiberboard, thin medium density fiberboard, and also furniture and other finished products made with composite wood products. Formaldehyde is produced on a large scale worldwide. One major use includes the production of wood binding adhesives and resins. CARB developed a modified version of the Composite Wood Product ATCM that was released for a 15-day public comment period on January 31, 2008, and was approved April 18, 2008, by the Office of Administrative Law. Further amendments to this ATCM were approved in May of 2012.

ATCM for Benzene from Retail Service Stations

CARB adopted the ATCM for Emissions of Benzene from Retail Service Stations. The ATCM reflects the use of best available control technology, which requires the installation of CARB-certified Phase I and II vapor recovery control equipment at all retail service stations. The ATCM is designed to reduce benzene and total hydrocarbon emissions from uncontrolled stations by 95 percent. Figure 3 shows the trend of benzene emissions in the Valley.

Figure 3. Benzene Emissions Trend, San Joaquin Valley (CARB Annual Toxics Monitoring Data)



ATCMs Adopted by the District as Regulations:

- District Rule 7011: Chromium Plating And Chromic Acid Anodizing Facilities
- District Rule 7012: Hexavalent Chromium - Cooling Towers
- District Rule 7021: Ethylene Oxide - Sterilizers and Aerators
- District Rule 7031: Dioxin - Medical Waste Incinerators
- District Rule 7041: Fluorides - Phosphoric Acid Plants
- District Rule 7050: Asbestos - Containing Material for Surfacing Applications
- District Rule 7060: Toxic Metals from Non-Ferrous Metal Melting
- District Rule 7070: Perchloroethylene from Dry Cleaning Operations

Other ATCMs are implemented primarily through the permitting process. These include the ATCM for Stationary Compression Ignition Engines and the ATCM for Diesel Particulate Matter from Portable Engines Rated at 50 Horsepower and Greater.

Reducing Health Risk through Enforcement Delegation

On July 1, 2008, the District began enforcing California Air Resources Board's ATCM to Limit School Bus Idling and Idling at Schools and ATCM to Limit Diesel-Fueled Commercial Motor Vehicle Idling, during timeframes in which state funding is available to

support these efforts. The purpose of these ATCMs is to reduce toxic and criteria air pollutants by limiting idling time. By enforcing these requirements in the Valley, the District is able to directly reduce public exposure from toxic emissions, especially in sensitive areas.

The District was delegated the responsibility of enforcing the U.S. EPA's NESHAP for asbestos, a known carcinogen, and as a result performs hundreds of inspections of construction projects that have the possibility of disturbing asbestos containing materials. By ensuring that these materials are removed and handled correctly, the probability of harmful releases of asbestos is significantly reduced.

Implementation of Federal Air Toxics Mandates

EPA has issued NESHAPs through Part 61 and Part 63 of Title 40 of the Code of Federal Regulations (CFR). The Part 61 NESHAPs were issued prior to the adoption of the Federal Clean Air Act Amendments of 1990. Those NESHAPs are specific to a particular hazardous air pollutant (HAP). Due to little activity in adopting NESHAPs, the 1990 amendments to the Federal Clean Air Act established a new procedure for developing NESHAPs. A list of 189 HAPs was established. EPA identified industries that emitted those HAPs and established a prioritized list of over 70 source categories for which Maximum Achievable Control Technology (MACT) standards would be promulgated. These MACT standards apply to major sources of HAPs, defined as sources with emissions greater than 10 tons per year of a single HAP, or 25 tons per year of combined HAPs. Many of these source categories are already subject to state and local regulation, which have traditionally been more stringent than the federal regulations. EPA has already adopted MACT standards to address the majority of the source categories identified.

In addition to the MACT standards for major sources, EPA is also required to adopt NESHAPs standards to reduce the health risk associated with area (non-major) sources of HAPs. As the result of a lawsuit, EPA was under court order to promulgate area source NESHAPs for 4 categories of sources by December 15, 2006; for 6 categories by June 15, 2007; and for 10 categories each 6 months thereafter until June 15, 2009. Similar to the MACT standards for major sources, many of the area sources subject to these standards are already subject to state and local regulation. Area source NESHAPs have already been promulgated for Oil and Natural Gas Production Facilities; Polyvinyl Chloride and Copolymers Production, Primary Copper Smelting, Secondary Copper Smelting, and Primary Nonferrous Metals - Zinc, Cadmium, and Beryllium; Acrylic and Modacrylic Fibers Production, Carbon Black Production, Chemical Manufacturing: Chromium Compounds, Flexible Polyurethane Foam Production and Fabrication, Lead Acid Battery Manufacturing, and Wood Preserving; Clay Ceramics Manufacturing, Glass Manufacturing, and Secondary Nonferrous Metals Processing; Electric Arc Furnace Steelmaking Facilities; and Hospital Ethylene Oxide Sterilizers. See Appendix D for the current status of the District's implementation of NESHAPs.

An amendment to 40 CFR part 63, subpart ZZZZ (control of HAPs from reciprocating internal combustion engines) was proposed on June 6, 2012, and was finalized by EPA

on January 14, 2013. This regulation requires reductions in hazardous air pollutants from stationary internal combustion engines over the next several years, and requires significant recordkeeping and monitoring of the engines affected. The District is currently developing processes and policies to assist those facilities affected to comply with the new requirements.

Many other amendments to existing NESHAPs were finalized in 2012: Chemical Manufacturing, Hard & Decorative Chrome electroplating and HCL supplements, Polyvinyl Chloride, Nitric Acid Plants, Petroleum Refineries process heaters and flares, etc. While these NESHAPs have lesser applicability in California and the San Joaquin Valley than the engine NESHAP discussed above, the District will identify, notify, and assist those facilities affected.

In December 2021, EPA issued a decision extending Toxic Release Inventory (TRI) reporting for ethylene oxide to 29 facilities across the country. These facilities were required to begin tracking their chemical activities, releases and other waste management quantities starting in January 2022 and submit TRI data to EPA in 2023. None of these facilities are located within the San Joaquin Valley.

The District currently is delegated authority by EPA to implement and enforce NESHAPs through two mechanisms. First, all major sources of HAPs are required to obtain Title V operating permits. The NESHAP requirements for these major sources are included in the Title V permits for which the District is delegated authority by EPA. Second, the District is delegated authority to implement and enforce all area source NESHAPs that are included in District Rule 4002, most recently amended on May 20, 2004. Under the District's Air Toxics Program and federal regulations, there are several options for implementing new NESHAP requirements. These options are discussed in more detail below. The District will choose the most appropriate option for implementing each Federal standard, and will hold public workshops to obtain public input on the implementation of these additional standards.

- Straight Delegation: Accepting delegation of the federal standard as written by amending Rule 4002 or by agreeing to automatic delegation with an option of opting-out for specific NESHAPs using an approach developed by the (CAPCOA);
- Rule Adjustment: Proposing minor changes to the federal MACT rule that make the adjusted rule no less stringent than the federal standard;
- Rule Substitution: Substituting one or more existing, new, or amended District rules for the federal standard (It should be noted that California Districts have been delegated authority for the chrome plating and dry cleaning NESHAPs because EPA has agreed that the ATCMs for those source categories are equivalent to the NESHAPs.);
- Streamlining Multiple Applicable Requirements: Minimizing duplicative requirements by placing the more stringent emission limit or workplace practice standard on the permit along with the corresponding monitoring, recordkeeping, and reporting requirements;
- Program Substitution: Using existing programs to assure compliance with the

- requirements of federal standards;
- No Delegation: Using existing programs to reduce the emissions of hazardous air pollutants without delegation of federal standards.

The NESHAPs for which the District has received delegation through Rule 4002 are listed in Table D1 in Appendix D. All current NESHAPs for which the District has not received delegation through Rule 4002 are listed in Table D2 in Appendix D.

Regardless of the status and type of delegation, the District believes strongly in working with the affected sources to make them aware of the requirements in a timely manner, and then help them understand and comply with these public health protective regulations.

Air Dispersion Modeling



Air quality models use mathematical techniques to simulate the physical and chemical processes that affect air pollutants as they disperse and react in the atmosphere. These models form the backbone of the air toxics management process, as they are used to assess the potential exposure of the public to various toxic emissions. Using inputs of meteorological data and source parameter information such as emission rates and stack height, models predict ambient concentrations of primary pollutants that are emitted. Models are also important to the air quality management process because they determine compliance with National/State Ambient Air Quality Standards (NAAQS/SAAQS), and other regulatory requirements such as New Source Review (NSR).

EPA Regulatory Model (AERMOD)

The American Meteorological Society/Environmental Protection Agency Regulatory Model Improvement Committee (AERMIC) was formed to introduce state-of-the-art modeling concepts into the EPA's air quality models. Through AERMIC, a modeling system, AERMOD, was developed to incorporate air dispersion based on planetary boundary layer turbulence structure and scaling concepts, including treatment of both surface and elevated sources, and both simple and complex terrain.

With the promulgation of AERMOD as the preferred air dispersion model in EPA's *Guideline on Air Quality Models* (signed by the EPA Administrator on October 21, 2005 and published November 9, 2005 in the *Federal Register*), AERMOD is used for appropriate application as a replacement for ISCST3 since November 9, 2006.

Meteorological Data

The District makes available meteorological data from both the National Climatological Data Center (NCDC) and the Fifth-Generation Penn State/National Center for Atmospheric Research Mesoscale Model (MM5). The NCDC data were collected at major airports in the San Joaquin Valley. The MM5 data were derived from a numerical model for locations in the valley where there are no airports. These locations are primarily in the western part of the Valley. All processed data is freely available for download on the District's web page at:

https://www.valleyair.org/busind/pto/Tox_Resources/AirQualityMonitoring.htm

Appendices

- Appendix A: Facilities Assessed Under AB 2588 in 2022
- Appendix B: Toxic Emissions Summary
- Appendix C: AB 2588 District Implementation Flow Chart
- Appendix D: Current Status of NESHAP Delegation

Appendix A. Facilities Assessed under AB 2588 in 2022

Appendix A includes a detailed list of the facilities assessed under AB 2588 in 2022. Table A1 includes gasoline dispensing facilities prioritized, Table A2 includes other types of facilities prioritized, and Table A3 includes the facilities with completed health risk assessments.

Table A1. Gasoline Dispensing Facilities Prioritized in 2022

Region	Facility ID	Facility Name	City	Prioritization Score	Prioritization Category
C	1123	1 Star Mini Mart	Fresno	1.04	Intermediate
C	1782	1 Stop Liquor & Gas	Madera	0.51	Exempt/Low
C	284	11th Street Chevron Inc.	Hanford	0.80	Exempt/Low
S	750	24/7 Food & Fuel LLC	Bakersfield	0.51	Exempt/Low
S	5587	2nd Generation	Visalia	0.81	Exempt/Low
C	1351	3j's Market	Kingsburg	0.51	Exempt/Low
S	1834	3way Market And Gas	Bakersfield	0.51	Exempt/Low
S	2066	4010 Arco Am/Pm	Bakersfield	2.04	Intermediate
C	1786	41 Gas & Liquor	Madera	1.23	Intermediate
S	100	4b Market & Gas	Tulare	0.60	Exempt/Low
S	8347	4ever Limited Inc. DbA Gasko Mart	Bakersfield	0.91	Exempt/Low
S	2184	51 Crown Enterprise Inc. DbA Lucky 7 Food	Delano	0.51	Exempt/Low
N	993	620 West Charter Way LLC	Stockton	0.93	Exempt/Low
S	2101	7 - Eleven Inc.	Bakersfield	0.51	Exempt/Low
S	9500	7 Eleven Facility #38628	Bakersfield	0.69	Exempt/Low
S	9280	7 Eleven Inc.	Bakersfield	0.51	Exempt/Low
S	2237	7- Eleven Inc.	Bakersfield	0.51	Exempt/Low
C	102	7- Eleven Inc.	Clovis	0.59	Exempt/Low
C	1266	7- Eleven Inc.	Fresno	0.62	Exempt/Low
S	2221	7- Eleven Inc.	Visalia	0.62	Exempt/Low
C	104	7- Eleven Inc.	Clovis	0.73	Exempt/Low
N	1407	7- Eleven Inc.	Merced	0.81	Exempt/Low
C	1943	7- Eleven Inc.	Clovis	0.83	Exempt/Low
N	1408	7- Eleven Inc.	Merced	0.84	Exempt/Low
C	1794	7- Eleven Inc.	Oakhurst	0.86	Exempt/Low
S	2225	7- Eleven Inc.	Visalia	0.92	Exempt/Low
C	91	7- Eleven Inc.	Fresno	1.00	Exempt/Low
C	100	7- Eleven Inc.	Hanford	1.08	Intermediate
C	1795	7- Eleven Inc.	Chowchilla	1.11	Intermediate
N	1403	7- Eleven Inc.	Atwater	1.16	Intermediate
C	96	7- Eleven Inc.	Hanford	1.18	Intermediate
C	79	7- Eleven Inc.	Mendota	1.23	Intermediate

2022 Annual Report on the District's Air Toxics Program

Region	Facility ID	Facility Name	City	Prioritization Score	Prioritization Category
C	2936	7- Eleven Inc.	Madera	1.38	Intermediate
C	1263	7- Eleven Inc.	Kettleman City	1.45	Intermediate
S	2235	7- Eleven Inc.	Lost Hills	1.46	Intermediate
N	1406	7- Eleven Inc.	Los Banos	1.49	Intermediate
N	1409	7- Eleven Inc.	Merced	1.69	Intermediate
C	105	7- Eleven Inc.	Reedley	1.75	Intermediate
C	83	7- Eleven Inc.	Selma	1.83	Intermediate
C	1232	7- Eleven Inc.	Fresno	1.91	Intermediate
N	1392	7- Eleven Inc.	Merced	1.93	Intermediate
C	1944	7- Eleven Inc.	Kerman	2.00	Intermediate
N	1404	7- Eleven Inc.	Santa Nella	2.11	Intermediate
N	1753	7- Eleven Inc.	Oakdale	2.82	Intermediate
N	3520	76 Express Tiger No 1	Stockton	0.47	Exempt/Low
S	3256	7-Eleven #32241	Bakersfield	1.38	Intermediate
N	9759	7-Eleven #38877	Stockton	0.51	Exempt/Low
C	9572	7-Eleven 38756	Clovis	0.76	Exempt/Low
C	1168	7-Eleven Inc.	Hanford	0.51	Exempt/Low
N	3514	7-Eleven Inc.	Stockton	0.51	Exempt/Low
S	161	7-Eleven Inc.	Visalia	0.51	Exempt/Low
S	2155	7-Eleven Inc.	Bakersfield	0.51	Exempt/Low
S	2136	7-Eleven Inc.	Oildale	0.51	Exempt/Low
C	9587	7-Eleven Inc.	Fresno	0.51	Exempt/Low
S	2093	7-Eleven Inc.	Visalia	0.51	Exempt/Low
S	2128	7-Eleven Inc.	Bakersfield	0.51	Exempt/Low
S	2138	7-Eleven Inc.	Bakersfield	0.51	Exempt/Low
S	9289	7-Eleven Inc.	Bakersfield	0.51	Exempt/Low
C	1167	7-Eleven Inc.	Lemoore	0.55	Exempt/Low
S	3268	7-Eleven Inc.	Bakersfield	0.57	Exempt/Low
S	2137	7-Eleven Inc.	Arvin	0.58	Exempt/Low
C	1114	7-Eleven Inc.	Fresno	0.87	Exempt/Low
C	3526	7-Eleven Inc.	Fresno	0.88	Exempt/Low
C	9586	7-Eleven Inc.	Fresno	0.92	Exempt/Low
S	3292	7-Eleven Inc.	Bakersfield	1.12	Intermediate
N	136	7-Eleven Inc.	Stockton	1.40	Intermediate
N	7529	7-Eleven Inc.	Ceres	1.50	Intermediate
C	3167	7-Eleven Inc. 35068	Lemoore	0.63	Exempt/Low
N	9768	7-Eleven Inc.	Ceres	0.66	Exempt/Low
N	9496	7-Eleven Inc.	Stockton	1.11	Intermediate
N	5010	7-Eleven Incorporated	Stockton	1.36	Intermediate
N	747	7-Eleven, Inc.	Stockton	0.51	Exempt/Low

2022 Annual Report on the District's Air Toxics Program

Region	Facility ID	Facility Name	City	Prioritization Score	Prioritization Category
N	1370	7-Eleven, Inc.	Los Banos	0.51	Exempt/Low
N	745	7-Eleven, Inc.	Manteca	0.51	Exempt/Low
N	748	7-Eleven, Inc.	Stockton	0.80	Exempt/Low
N	3940	7-Eleven, Inc.	Tracy	1.38	Intermediate
N	3810	7-Eleven, Inc.	Stockton	2.24	Intermediate
S	9298	7-Eleven, Inc.	Bakersfield	0.51	Exempt/Low
N	9781	7-Eleven, Inc. Store #38704	Los Banos	1.03	Intermediate
N	744	7-Eleven, Store #17647	Manteca	0.51	Exempt/Low
S	593	8 And 10 Market	Porterville	0.51	Exempt/Low
S	2002	9700 Rosedale LLC	Bakersfield	1.32	Intermediate
S	3003	99 Food Mart	Tulare	0.51	Exempt/Low
S	2082	99 Gas & Food Mart Inc.	Kingsburg	1.00	Exempt/Low
S	3250	A & A Express	Maricopa	0.51	Exempt/Low
N	70	A & G Gas Inc.	Stockton	2.32	Intermediate
N	365	A & S Partnership Db a Fast & Easy Mart 103	Stockton	1.36	Intermediate
S	3844	A One Market Inc.	Bakersfield	0.51	Exempt/Low
N	4322	A&A Gas Inc. Db a A&A Gas And Food Mart	Manteca	3.25	Intermediate
N	1989	A&M Gas (Abdo Almolaiki)	Modesto	0.67	Exempt/Low
S	964	A-1 Food Gas Mart	Visalia	0.51	Exempt/Low
S	3070	A-1 Food Gas Mart	Lindsay	0.51	Exempt/Low
C	2026	A-1 Liquor & Gas (Pritam S. Gill)	Parlier	0.82	Exempt/Low
S	2074	Aa Gas 'N' Grub 2	Farmersville	0.67	Exempt/Low
S	977	Aa Gas-N-Grub	Exeter	0.67	Exempt/Low
N	3768	Aarti Petroleum	Turlock	2.28	Intermediate
N	8709	Aasra Petroleum, Inc.	Ripon	3.01	Intermediate
N	7841	Ab March Ln Stockton Operating Inc.	Stockton	4.84	Intermediate
C	46	Abby Arco	Fresno	0.70	Exempt/Low
N	8840	Abc Petroleum Inc. Db a Tracy Plaza Texaco	Tracy	5.83	Intermediate
N	117	Abdo Thabet Nashir	Stockton	0.56	Exempt/Low
N	103	Abdo Thabit Nashir	Stockton	0.51	Exempt/Low
N	8540	Abdo Thabit Nashir	Stockton	0.66	Exempt/Low
C	667	Abe's Liquor And Food	Clovis	0.82	Exempt/Low
N	1273	Adel's Mini Mart	Merced	0.67	Exempt/Low
N	1725	Agile Solutions & Consulting Inc.	Modesto	3.23	Intermediate
S	2183	Ahdi Enterprises Corp Db a Shafter Shell	Shafter	0.51	Exempt/Low
N	635	Ahmed's Sons Inc.	Manteca	1.53	Intermediate

2022 Annual Report on the District's Air Toxics Program

Region	Facility ID	Facility Name	City	Prioritization Score	Prioritization Category
C	2365	Ahwahnee Ez Mart	Ahwahnee	0.51	Exempt/Low
S	1584	Airport Texaco	Bakersfield	1.20	Intermediate
N	84	Aj's Mini Mart Inc.	Stockton	0.13	Exempt/Low
S	4253	Akers Texaco	Visalia	0.61	Exempt/Low
N	1986	Alex And Sons Gas And Food	Modesto	0.67	Exempt/Low
C	2297	All Star Mini Mart	Armona	0.62	Exempt/Low
S	312	Alraifi LLC	Porterville	0.67	Exempt/Low
S	933	Al's Mini Mart	Porterville	0.51	Exempt/Low
N	7689	Alves Center	Manteca	0.82	Exempt/Low
S	6749	Am Pm Arco	Tulare	3.50	Intermediate
N	1850	Amar Beer Wine & Gas	Turlock	0.00	Exempt/Low
S	3534	Amar Jyot LLC	Bakersfield	2.73	Intermediate
N	9476	American Bedliners & Truck Accessories	Stockton	2.87	Intermediate
N	1722	American United Investments Inc.	Oakdale	8.75	Intermediate
C	3837	Amigos Mini Mart	Avenal	5.82	Intermediate
C	7822	Analyst Properties LLC	Fresno	0.51	Exempt/Low
S	3689	Andreotti's Corner	Buttonwillow	0.02	Exempt/Low
N	1041	Ap DbA Billjar Valero	Tracy	0.67	Exempt/Low
N	1920	Ap Enterprise Inc. DbA Frontier Liquor	Modesto	0.51	Exempt/Low
C	4073	Ap Gill Inc. DbA Zoo Liquor & Gas	Fresno	0.51	Exempt/Low
S	7741	Apk 22 Inc	Dinuba	4.42	Intermediate
S	1000	Applegate Market (Said Kaeib)	Porterville	0.52	Exempt/Low
S	3918	Apro LLC	Visalia	0.61	Exempt/Low
N	133	Apro LLC	Stockton	1.36	Intermediate
N	132	Apro LLC	Stockton	1.48	Intermediate
C	9195	Apro, LLC DbA United Pacific #0251	Madera	1.44	Intermediate
N	1168	Arco #00237 - Mehar Petroleum Inc.	Merced	2.29	Intermediate
N	79	Arco #02186 - Khai Quang Vo	Stockton	1.36	Intermediate
N	83	Arco #05450 American United Investments	Stockton	1.97	Intermediate
N	71	Arco #06080 - Jamil Kabariti	Lathrop	3.68	Intermediate
N	9316	Arco #07071- MSCO Strauch Management LLC	Merced	4.15	Intermediate
N	9711	Arco #07124 - Bp Products North America	Merced	2.83	Intermediate
N	8850	Arco #07147-MSCO Strauch Management LLC	Stockton	3.03	Intermediate

2022 Annual Report on the District's Air Toxics Program

Region	Facility ID	Facility Name	City	Prioritization Score	Prioritization Category
N	78	Arco #83560 - Wight Holdings Inc.	Stockton	1.41	Intermediate
S	7081	Arco 82646	Delano	0.55	Exempt/Low
N	9463	Arco Am/Pm	Stockton	2.76	Intermediate
C	8583	Arco Am/Pm #83145	Madera	2.39	Intermediate
N	9311	Arco Am/Pm Stockton - Ken Dharni	Stockton	4.22	Intermediate
S	9015	Arco Am/Pm Wasco	Wasco	2.11	Intermediate
C	2317	Arco Am-Pm	Kingsburg	2.22	Intermediate
C	40	Arco AM-PM	Fresno	3.29	Intermediate
N	1727	Arco Fac #06043-Anshi & Ayaan Inc.	Modesto	1.81	Intermediate
N	85	Arco Fac #07049-Strauch Companies	Lodi	2.78	Intermediate
N	80	Arco Fac #2093 - Tracy Bains Inc.	Tracy	3.57	Intermediate
C	97	Arco Gas & Food Mart (Nirmal Singh Gill)	Fresno	0.63	Exempt/Low
C	3728	Arco Smog Pro	Fresno	5.83	Intermediate
C	9121	Arco Station Nees	Fresno	3.88	Intermediate
N	1745	Arco Turlock Petroleum Inc.	Turlock	1.94	Intermediate
C	3411	Arj Chevron	Avenal	0.62	Exempt/Low
N	76	Arp Minimart Corporation	Tracy	0.05	Exempt/Low
S	3418	Arvin Petroleum Inc.	Bakersfield	3.09	Intermediate
S	9035	Arvin Petroleum Inc. #47008	Arvin	1.97	Intermediate
S	2164	Asa Enterprise Inc. - Lucky 7	Bakersfield	0.51	Exempt/Low
N	4721	Ashish Boveja	Stockton	1.17	Intermediate
N	567	Ashish Boveja Db a My Mini Mart Gasoline	Stockton	0.79	Exempt/Low
C	1847	Ashlan Cedar Gas N Liquor	Fresno	2.07	Intermediate
N	9468	Asp Petroleum Inc	Manteca	4.51	Intermediate
N	1171	Atwater Shell	Atwater	1.08	Intermediate
N	4151	Au Energy, LLC	Modesto	1.06	Intermediate
S	7156	Avo's Shell (Avo Cholakian)	Bakersfield	1.75	Intermediate
N	3016	B & W Petroleum (Bait Barn)	Waterford	0.90	Exempt/Low
N	4012	B And W Petroleum	Escalon	0.90	Exempt/Low
C	4329	B&J Petroleum Sales LLC Db a Arco Am/Pm	Fresno	2.75	Intermediate
N	1185	B&V Inc. (Gurnek Bagri & Sammarbir Virk)	Los Banos	1.28	Intermediate
N	2056	B&W Petroleum	Patterson	0.79	Exempt/Low
C	2070	B&W Petroleum #103 Db a Tiny Mart	Prather	0.99	Exempt/Low
C	863	Baba Ji Market	Parlier	0.51	Exempt/Low

2022 Annual Report on the District's Air Toxics Program

Region	Facility ID	Facility Name	City	Prioritization Score	Prioritization Category
S	2428	Baba Properties Inc.	Bakersfield	0.54	Exempt/Low
S	9251	Bachan Singh Ghangas LLC	Bakersfield	1.07	Intermediate
C	690	Bag-O-Bag	Fresno	0.63	Exempt/Low
S	8987	Balkuver LLC	Bakersfield	1.93	Intermediate
N	8563	Ballico Mom And Pop Mini Mart	Ballico	0.67	Exempt/Low
N	1350	Balwant S Dhami, Sure Stop Market	Atwater	0.51	Exempt/Low
C	1805	Balwinder Singh DbA Madera Self Serv	Madera	0.85	Exempt/Low
C	7460	Bangar Chevron	Hanford	1.03	Intermediate
N	4748	Bap Enterprises Inc. / Wilson Way Chevron	Stockton	1.90	Intermediate
N	853	Baph 3 Inc. DbA 3 B's Truck & Auto Plaza	Lodi	2.01	Intermediate
C	1982	Barber Aviation	Madera	2.51	Intermediate
S	7609	Barn V	Visalia	0.93	Exempt/Low
S	1823	Bashaar Najdawi Chevron	Bakersfield	0.79	Exempt/Low
S	2368	Basic Properties	Delano	2.93	Intermediate
C	1718	Bass Fork Minit Mart	North Fork	0.51	Exempt/Low
C	2632	Bbs Partners Incorporated	Oakhurst	0.81	Exempt/Low
C	95	Beacon Gas & Food Mart	Fresno	0.78	Exempt/Low
C	7994	Beal Development LLC-Chevron Food Mart	Fresno	0.93	Exempt/Low
C	9439	Beal Developments	Fresno	0.94	Exempt/Low
C	9035	Beal Developments LLC	Clovis	0.71	Exempt/Low
C	7735	Beal Developments LLC, E-Z Mart	Clovis	0.73	Exempt/Low
C	297	Beal Developments, LLC	Fresno	1.37	Intermediate
C	697	Beal Properties Inc.	Fresno	0.51	Exempt/Low
C	3305	Beal Properties Inc.	Fresno	0.62	Exempt/Low
C	3677	Beal Properties Inc.	Fresno	1.04	Intermediate
S	1459	Bear Mountain Truck Stop	Bakersfield	0.63	Exempt/Low
C	109	Bee's Market/Hardeep Singh Rathore	Raisin City	0.53	Exempt/Low
C	2900	Behlo Oil Corp DbA Kingsburg Chevron	Kingsburg	1.05	Intermediate
C	112	Belmont Car Wash Inc.	Fresno	1.64	Intermediate
S	314	Ben Maddox Pik N Go	Visalia	0.51	Exempt/Low
S	850	Best Truck Stop	Pixley	0.51	Exempt/Low
C	1760	Bhaiti And Son Inc. - DbA Madera Mobil	Madera	0.93	Exempt/Low
C	3864	Bhandal Petro DbA Bulldog Gas & Mart #2	Fresno	0.94	Exempt/Low
S	6896	Bhandal Travel Center	Earlimart	8.10	Intermediate

2022 Annual Report on the District's Air Toxics Program

Region	Facility ID	Facility Name	City	Prioritization Score	Prioritization Category
N	9040	Bi Rite Liquor	Merced	0.86	Exempt/Low
S	9248	Big B's Travel Center #2	Delano	0.51	Exempt/Low
S	620	Big O Gas-Deli & Grill	Orosi	0.51	Exempt/Low
S	105	Big Stop Market Inc. Dba Big Stop Market	Shafter	0.67	Exempt/Low
C	2231	Bill's Quick Stop (Abdo Alhomedi)	Madera	0.51	Exempt/Low
N	3492	Bill's Sport & Bait Shop	Modesto	0.51	Exempt/Low
C	698	Bizzy Bee Gas & Food Mart	Fresno	3.07	Intermediate
S	2302	Bj's Express Mart	Visalia	0.86	Exempt/Low
C	1054	Bj's Food & Liquor #2	Fresno	1.01	Intermediate
C	1717	Bj's Gas And Liquor	Madera	0.73	Exempt/Low
N	261	Blackhawk Petroleum	Stockton	0.67	Exempt/Low
S	3760	Blackwells Corner Restaurant & Deli	Lost Hills	0.13	Exempt/Low
S	1261	Bob Shiralian Shell	Lebec	1.27	Intermediate
N	9362	Bobbies Food Corner	Atwater	0.51	Exempt/Low
S	970	Bob's Auto And Truck Stop	Pixley	0.51	Exempt/Low
S	621	Bob's Tiny Mart	Porterville	0.51	Exempt/Low
C	1218	Bobs Villa Food Mart	Clovis	1.43	Intermediate
N	4353	Bonfare Market #43	Modesto	0.51	Exempt/Low
C	1759	Boyal Brothers Inc. Dba Gas 'N' Grab	Madera	0.51	Exempt/Low
C	327	Boyett Petroleum	Clovis	0.51	Exempt/Low
N	2902	Boyett Petroleum	Modesto	0.51	Exempt/Low
N	3268	Boyett Petroleum	Modesto	1.20	Intermediate
N	9706	Boyett Petroleum	Modesto	2.04	Intermediate
N	1726	Bps Fuel	Modesto	5.83	Intermediate
N	612	Br Petro Inc, Dba Lakewood Chevron	Lodi	1.07	Intermediate
N	937	Brd Investments Inc./Waterloo Food Mart	Stockton	1.18	Intermediate
N	3840	Briggsmore Cruisers #11	Modesto	1.98	Intermediate
N	3963	Brother's Food Mart	Livingston	1.16	Intermediate
N	1241	Brothers Royal Crown	Atwater	1.13	Intermediate
S	2303	Br's Food Store	Porterville	0.51	Exempt/Low
S	115	Brundage Lane Am Pm	Bakersfield	1.63	Intermediate
S	8114	Brundage Petroleum Inc.	Bakersfield	2.46	Intermediate
N	7468	Bsv Inc. Dba Stop N Go	Atwater	0.51	Exempt/Low
N	1205	Bsv, Inc.	Atwater	1.52	Intermediate
C	9346	Bubble Clean	Fresno	1.59	Intermediate
S	7675	Buena Vista Concession (Rupinder Jhaj)	Taft	0.13	Exempt/Low

2022 Annual Report on the District's Air Toxics Program

Region	Facility ID	Facility Name	City	Prioritization Score	Prioritization Category
S	2697	Buford Oil Co	Lost Hills	0.03	Exempt/Low
C	153	Buford Oil Co (Star Mart)	Armona	0.51	Exempt/Low
C	154	Buford Oil Co (Star Mart)	Corcoran	0.51	Exempt/Low
C	162	Buford Oil Co (Star Mart)	Avenal	0.61	Exempt/Low
C	160	Buford Oil Co (Star Mart)	Hanford	1.30	Intermediate
C	1216	Buford Oil Co (Texaco)	Kingsburg	0.51	Exempt/Low
C	237	Buford Oil Co Inc. (Buford Shell #14)	Sanger	0.51	Exempt/Low
C	156	Buford Oil Co. (Little's Tex.)	Hanford	0.51	Exempt/Low
C	155	Buford Oil Co. (Star Mart #4)	Lemoore	0.51	Exempt/Low
C	158	Buford Oil Company	Riverdale	0.51	Exempt/Low
C	161	Buford Oil Company	Fowler	0.69	Exempt/Low
C	168	Buggy Bath	Pinedale	1.23	Intermediate
C	166	Buggy Bath Car Wash (Chevron)	Clovis	0.51	Exempt/Low
C	2770	Buggy Showers	Madera	0.89	Exempt/Low
C	1291	Bulldog Gas & Mart	Fresno	0.87	Exempt/Low
C	38	Bunnell & Almann's Petroleum Inc.	Fresno	2.85	Intermediate
C	7263	Bush Chevron	Lemoore	0.96	Exempt/Low
C	291	Butler Chevron 95768	Fresno	0.71	Exempt/Low
S	2797	Buttonwillow Chevron	Buttonwillow	8.75	Intermediate
S	2047	Buttonwillow Food And Gas	Buttonwillow	2.99	Intermediate
S	2432	Bye Bye Inc./Samco Oak #5	Bakersfield	1.16	Intermediate
N	1856	Bz Mart (Balwinder Dhillon)	Modesto	0.51	Exempt/Low
C	2508	C & C Fuel Company	Madera	0.92	Exempt/Low
N	8797	C & F Market Harvin Fuel	Modesto	0.67	Exempt/Low
C	5741	C A Plaza	Hanford	0.51	Exempt/Low
C	50	C&B Arco DbA H&R Enterprises	Fresno	2.00	Intermediate
N	534	C.D.& R's Oil Inc. DbA Tracy Blvd Chevron	Tracy	2.30	Intermediate
N	9231	Cagasoline Inc. DbA Cagasoline Express	Manteca	1.39	Intermediate
N	161	California Car Wash	Stockton	0.51	Exempt/Low
C	1276	California- Fresno Oil Co-Fowler 76-109	Fowler	0.86	Exempt/Low
S	484	California Fresno Oil Co-Mooney 76-114	Visalia	0.59	Exempt/Low
S	2521	California Mini Mart (Sikander Jassar)	Bakersfield	0.77	Exempt/Low
N	2165	California Pacific Connect Inc.	Modesto	0.51	Exempt/Low
N	2500	California Stop	Stockton	0.51	Exempt/Low

2022 Annual Report on the District's Air Toxics Program

Region	Facility ID	Facility Name	City	Prioritization Score	Prioritization Category
S	2500	California-Fresno Oil Co	Visalia	0.51	Exempt/Low
C	1120	California-Fresno Oil Co	Selma	0.69	Exempt/Low
C	2368	California-Fresno Oil Co	Fresno	1.44	Intermediate
C	468	California-Fresno Oil Co	Fresno	2.82	Intermediate
C	1917	California-Fresno Oil Co	Fresno	5.83	Intermediate
C	1300	California-Fresno Oil Company-Universit	Clovis	1.91	Intermediate
C	1124	California-Fresno Oil Co-Westside 76-107	Firebaugh	1.43	Intermediate
S	2356	Capri Food Store	Mcfarland	0.51	Exempt/Low
N	1193	Card-Gas, Inc.	Merced	0.61	Exempt/Low
C	2880	Cardlock Fuels System, LLC	Fresno	0.51	Exempt/Low
N	2288	Cardlock Fuels System, LLC	Turlock	0.51	Exempt/Low
N	1775	Cardlock Fuels System, LLC.	Modesto	0.51	Exempt/Low
C	2034	Cargo Mart	Laton	0.51	Exempt/Low
C	805	Castle B Inc. DbA Parkside Chevron	Fresno	1.04	Intermediate
C	4141	Cavalier Food	Fresno	1.23	Intermediate
N	1733	Cb 50 Yosemite Blvd Operating Inc.	Modesto	1.68	Intermediate
S	3780	Cbrr Inc.	Taft	0.02	Exempt/Low
C	694	Central Food Mart	Fresno	5.83	Intermediate
N	1770	Central Gas Oakdale	Oakdale	0.59	Exempt/Low
N	9033	Central Valley Gas Stations Atwater	Merced	5.83	Intermediate
N	1198	Century Chevron	Merced	0.69	Exempt/Low
N	1809	Century Chevron	Turlock	1.13	Intermediate
N	4989	Century Chevron Food Mart	Turlock	1.46	Intermediate
N	4766	Century Chevron Food Mart	Turlock	8.75	Intermediate
N	1343	Century Petroleum Inc./Century Chevron	Merced	1.10	Intermediate
N	1746	Ceres Cruisers #12	Ceres	0.92	Exempt/Low
N	1730	Ceres Petroleum Inc. DbA Arco Ampm	Ceres	3.46	Intermediate
N	2168	Ceres Shell	Ceres	1.37	Intermediate
S	9366	Chahal Enterprise Inc. #1	Visalia	3.48	Intermediate
C	718	Chahal Management Inc.	Kerman	0.78	Exempt/Low
S	8767	Chandi Josan Petroleum Inc.	Visalia	3.41	Intermediate
N	8933	Charanjit Jutla	Tracy	2.26	Intermediate
N	2523	Charter Way Petro Inc.	Stockton	2.53	Intermediate
C	1119	Chase Inc.	Kettleman City	1.86	Intermediate

2022 Annual Report on the District's Air Toxics Program

Region	Facility ID	Facility Name	City	Prioritization Score	Prioritization Category
C	1002	Chase Inc. - Kettleman City Exxon	Kettleman City	0.56	Exempt/Low
S	3750	Chase Inc. - Tejon Valero	Lebec	1.17	Intermediate
S	1658	Chase Inc. 76	Lost Hills	1.26	Intermediate
C	2427	Chase Inc. B P	Coalinga	1.75	Intermediate
C	2374	Chase Inc. DbA Slater Shell	Fresno	2.90	Intermediate
S	3043	Chase Inc. Buttonwillow	Buttonwillow	1.50	Intermediate
C	9166	Chase Valero Travel Center	Firebaugh	1.35	Intermediate
C	37	Chase, Inc.	Coalinga	0.53	Exempt/Low
S	8063	Chauhan & Toor Inc.	Pixley	2.60	Intermediate
S	240	Chester Liquor Market	Bakersfield	0.51	Exempt/Low
S	770	Chevron Food Mart	Tulare	0.58	Exempt/Low
N	4034	Chevron Products Co	Tracy	2.72	Intermediate
N	2363	Chevron Products Co A Chevron Usa Inc.	Stockton	1.52	Intermediate
N	4947	Chevron Products Co A Chevron Usa Inc.	Tracy	1.78	Intermediate
N	4693	Chevron Products Company	Ripon	1.38	Intermediate
N	4114	Chevron Products Company	Livingston	1.48	Intermediate
N	3919	Chevron Products Company	Modesto	1.57	Intermediate
N	4405	Chevron Products Company	Manteca	1.57	Intermediate
N	7627	Chevron Products Company	Riverbank	2.20	Intermediate
N	4087	Chevron Products Company	Stockton	2.40	Intermediate
N	7462	Chevron Products Company	Stockton	2.46	Intermediate
N	4165	Chevron Station & Mini Mart	Merced	1.86	Intermediate
C	280	Chevron U.S.A. Inc.. #96953	Kettleman City	3.06	Intermediate
N	2515	Chevron Usa Inc.	Tracy	3.11	Intermediate
S	9041	Chevron Usa Inc.	Bakersfield	0.00	Exempt/Low
S	2439	Chevron Usa Inc.	Lost Hills	1.20	Intermediate
C	279	Chevron Usa Inc. #92133	Coalinga	2.94	Intermediate
N	3315	Chevron Usa Inc.	Manteca	1.43	Intermediate
N	1813	Chevron Usa Products Company	Modesto	1.61	Intermediate
N	31	Chevron Usa Products Company	Stockton	1.84	Intermediate
N	1812	Chevron Usa Products Company	Ceres	1.98	Intermediate
N	1204	Chevron Usa Products Company	Santa Nella	2.47	Intermediate
N	325	Chevron Usa Products Company	Stockton	2.51	Intermediate
C	290	Chevron Usa, Inc. #92316	Firebaugh	2.36	Intermediate

2022 Annual Report on the District's Air Toxics Program

Region	Facility ID	Facility Name	City	Prioritization Score	Prioritization Category
S	7230	Circle 7 Liquor Inc.	Visalia	0.52	Exempt/Low
C	2313	Circle D Food & Liquor	Fresno	0.67	Exempt/Low
S	1871	Circle Deli	Bakersfield	0.51	Exempt/Low
N	3200	Circle J Food & Gas	Turlock	0.51	Exempt/Low
N	8956	Circle K Los Banos	Los Banos	2.61	Intermediate
C	2325	Circle K Stores Inc.	Fresno	0.51	Exempt/Low
S	2299	Circle K Stores Inc.	Bakersfield	0.51	Exempt/Low
S	2141	Circle K Stores Inc.	Wasco	0.52	Exempt/Low
S	2146	Circle K Stores Inc.	Bakersfield	0.53	Exempt/Low
S	2143	Circle K Stores Inc.	Bakersfield	0.65	Exempt/Low
C	319	Circle K Stores Inc.	Hanford	0.66	Exempt/Low
N	1211	Circle K Stores Inc.	Dos Palos	0.89	Exempt/Low
N	1206	Circle K Stores Inc.	Atwater	0.96	Exempt/Low
C	321	Circle K Stores Inc.	San Joaquin	1.00	Exempt/Low
C	323	Circle K Stores Inc.	Avenal	1.01	Intermediate
N	1822	Circle K Stores Inc.	Modesto	1.03	Intermediate
N	1210	Circle K Stores Inc.	Los Banos	1.20	Intermediate
C	322	Circle K Stores Inc.	Selma	2.10	Intermediate
C	9207	Circle K Stores Inc.	Fresno	2.30	Intermediate
N	1821	Circle K Stores Inc.	Turlock	3.16	Intermediate
N	1405	Circle 'R' Minimart	Merced	0.73	Exempt/Low
S	325	City Food Mart Lindsay	Lindsay	0.59	Exempt/Low
N	2004	City Mart And Gas, Inc.	Modesto	0.51	Exempt/Low
C	2969	City Of Coalinga	Coalinga	0.02	Exempt/Low
N	1218	City Of Gustine	Gustine	0.63	Exempt/Low
C	3570	City Of Hanford	Hanford	2.51	Intermediate
N	9488	Cj Jutla	Ripon	1.90	Intermediate
S	3402	Ckg Mart Inc.	Lamont	1.29	Intermediate
C	9375	Clovis Arco Am/Pm	Clovis	2.85	Intermediate
C	3209	Clovis Mart & Gas (Valero Gas)	Clovis	2.12	Intermediate
C	1695	Clovis Shell	Clovis	1.53	Intermediate
N	4159	Cls Fuel Enterprises Inc.	Oakdale	1.15	Intermediate
C	1732	Coarsegold Kwik Serv/Boyett Petroleum	Coarsegold	0.92	Exempt/Low
C	1731	Coarsegold Self Service Station/S Singh	Coarsegold	0.76	Exempt/Low
C	4214	Coast To Coast Petroleum	Fresno	1.75	Intermediate
N	1836	Coffee Road Petroleum	Modesto	2.36	Intermediate
N	220	Collegeville Market & Cafe	Stockton	1.02	Intermediate
S	8147	Comanche Shell	Bakersfield	1.15	Intermediate
S	316	Convenience Corner Iii	Goshen	0.67	Exempt/Low

2022 Annual Report on the District's Air Toxics Program

Region	Facility ID	Facility Name	City	Prioritization Score	Prioritization Category
N	3494	Corner Market & Deli	Stevinson	0.51	Exempt/Low
C	8848	Costco Gasoline	Hanford	2.49	Intermediate
N	4255	Costco Wholesale Loc #661	Modesto	13.60	High Priority
C	2484	Country Club Food Mart	Madera	0.55	Exempt/Low
N	3845	Country Marketplace	Stockton	1.64	Intermediate
N	450	Country Mart Gas & Food	Tracy	0.01	Exempt/Low
S	9208	Countryside Village	Bakersfield	7.29	Intermediate
S	3427	County Line Chevron	Delano	1.11	Intermediate
C	385	Cressman's - Gillett LLC	Shaver Lake	0.13	Exempt/Low
N	2104	Crowslanding Petroleum, Inc.	Modesto	1.13	Intermediate
N	8505	Cruisers Manteca - Bp #29	Manteca	1.63	Intermediate
C	3243	C's Oasis (Chuay Chhun & Cindy Yee)	Fresno	0.94	Exempt/Low
S	3848	Csg Petroleum Inc.	Bakersfield	2.45	Intermediate
S	2284	Cutler Food Mart	Cutler	0.73	Exempt/Low
S	4176	Cypress Flyers	Visalia	5.83	Intermediate
S	3982	D & R Lost Hills Co Brand Facility	Lost Hills	0.58	Exempt/Low
S	3680	D J Holding Inc.	Bakersfield	0.70	Exempt/Low
S	3038	D Street Chevron	Porterville	0.51	Exempt/Low
N	643	Dabb Corporation	Manteca	0.51	Exempt/Low
S	3310	Daffodils LLC	Visalia	0.58	Exempt/Low
N	4654	Dale Road Cruisers #22	Modesto	2.37	Intermediate
C	1778	Daljit Singh Chohan	Madera	0.51	Exempt/Low
N	518	Darrell Eppler Dba March Lane 76	Stockton	1.51	Intermediate
C	3525	Dassel's Petroleum, Inc.	Hanford	0.67	Exempt/Low
S	3568	Day N Night Mini Mart	Tulare	0.51	Exempt/Low
S	1036	Day N Nite Mini Mart	Lindsay	0.51	Exempt/Low
C	1144	Db Ashlan Inc.	Fresno	1.14	Intermediate
S	9131	Delano Chevron	Delano	0.88	Exempt/Low
S	2543	Delano City Municipal Airport	Delano	0.00	Exempt/Low
N	4484	Delhi Arco	Delhi	5.83	Intermediate
N	1229	Delhi Gas & Liquor	Delhi	0.51	Exempt/Low
N	4283	Delta Charter Inc.	Stockton	1.50	Intermediate
C	3461	Depot Development, Inc.	Friant	5.83	Intermediate
S	3252	DGC Oil Inc.	Bakersfield	2.08	Intermediate
S	587	Diamond Food Mart LLC	Tulare	0.75	Exempt/Low
N	7509	Diamond Gas & Mart	Modesto	0.67	Exempt/Low
N	9146	Diamond Gas & Mart #5	Modesto	0.67	Exempt/Low
S	6820	Dillon & Sons Dba The Barn #4	Arvin	0.51	Exempt/Low

2022 Annual Report on the District's Air Toxics Program

Region	Facility ID	Facility Name	City	Prioritization Score	Prioritization Category
C	1999	Dinkey Creek Inn & General Store Inc.	Shaver Lake	0.00	Exempt/Low
S	2813	DJs Food Mart	Bakersfield	0.51	Exempt/Low
S	962	Doc's Corner Inc.	Tulare	0.51	Exempt/Low
S	742	Don's Liquor Mart	Frazier Park	1.04	Intermediate
N	4604	Dos Palos Chevron	Dos Palos	0.02	Exempt/Low
N	4209	Dos Palos Mini Mart	Dos Palos	0.51	Exempt/Low
N	1735	Dosanjh Family Partnership	Turlock	2.48	Intermediate
N	1794	Dosanjh Family Partnership	Modesto	2.53	Intermediate
N	1734	Dosanjh Petroleum	Salida	1.93	Intermediate
S	939	Double D Mini-Mart	Visalia	0.51	Exempt/Low
N	1757	Downtown Valero	Modesto	0.51	Exempt/Low
C	441	D's Mini Mart	San Joaquin	0.51	Exempt/Low
S	1033	Ducor Handy Market Inc.	Ducor	0.51	Exempt/Low
C	664	Dulai B Corporation Dba J S Mini Mart	Corcoran	0.51	Exempt/Low
S	2353	Dulai Mini Mart/Parmajeet Singh Dulai	Bakersfield	0.87	Exempt/Low
C	472	E Z Go Mini Mart	Fresno	0.51	Exempt/Low
S	3328	E Z Stop Mobil	Bakersfield	1.05	Intermediate
N	1883	E&J Kwik Serv	Modesto	0.57	Exempt/Low
N	3875	Eage Investments LLC	Stockton	2.20	Intermediate
S	2192	Earlimart Valero	Earlimart	0.51	Exempt/Low
N	8807	East Harney Arco - Ken Dharni	Lodi	3.06	Intermediate
S	4206	East Hills Cc Inc.	Bakersfield	0.99	Exempt/Low
S	7378	East Travel Plaza LLC	Arvin	4.07	Intermediate
N	755	El Dorado Food Mart	Stockton	2.13	Intermediate
N	3451	El Dorado Gas And Mart	Stockton	0.67	Exempt/Low
C	685	El Toro Market	Caruthers	0.51	Exempt/Low
C	59	Elkhorn Ave Market	Caruthers	0.67	Exempt/Low
N	2400	Elkhorn Golf Club	Stockton	2.50	Intermediate
N	308	Emil's Liquor & Sport Shop	Escalon	2.92	Intermediate
S	2642	Empire Gas & Liquor	Bakersfield	0.77	Exempt/Low
N	1887	Empire Liquors	Empire	1.59	Intermediate
S	8782	Encore Petroleum Inc.	Visalia	4.49	Intermediate
S	6748	Erin Group LLC	Visalia	0.59	Exempt/Low
N	312	Ernie's General Store	Stockton	0.64	Exempt/Low
N	313	Escalon Mini-Mart	Escalon	0.51	Exempt/Low
C	577	Evergreen Food Store	Fresno	0.51	Exempt/Low
N	4398	Excel Petroleum, Inc.	Stockton	0.70	Exempt/Low
N	388	Excel Petroleum, Inc.	Stockton	5.83	Intermediate

2022 Annual Report on the District's Air Toxics Program

Region	Facility ID	Facility Name	City	Prioritization Score	Prioritization Category
S	2073	Exeter Mini Mart (Novroz Ali Rahim)	Exeter	0.51	Exempt/Low
S	481	Exeter Pik N Go	Exeter	0.73	Exempt/Low
S	3937	Express Gas Mart (Jesus Ontiveros)	Alpaugh	0.67	Exempt/Low
N	1987	Express Market (B Singh & V Sidhu)	Oakdale	0.53	Exempt/Low
S	6507	Express Mart & Gas	Porterville	1.50	Intermediate
N	8126	Express Mart 1	Modesto	1.56	Intermediate
S	2037	Express Mini Mart	Visalia	0.51	Exempt/Low
S	752	E-Z Mart	Bakersfield	0.76	Exempt/Low
C	8168	Ez Mart #4	Sanger	0.51	Exempt/Low
C	1770	E-Z Mart & Gas (Chaitanya Shah)	Oakhurst	0.67	Exempt/Low
C	1307	Ez Mart Food & Gas	Fresno	0.66	Exempt/Low
C	1755	Ez Mart Food Store # 15	Madera	5.83	Intermediate
S	923	Ez Pick N Go	Visalia	0.51	Exempt/Low
C	467	E-Z Trip Fresno	Fresno	1.30	Intermediate
S	2071	Fa&Y Venture Inc. Dba On Your Way Food St	Delano	0.78	Exempt/Low
N	1991	Fairview General Store	Ceres	0.51	Exempt/Low
C	7834	Falcon Junction Inc.	Prather	1.20	Intermediate
C	947	Family Express Food & Liquor	Fresno	0.51	Exempt/Low
C	987	Family Express Food & Liquor #2	Fresno	0.51	Exempt/Low
C	8043	Family Express Food And Deli	Fresno	0.51	Exempt/Low
C	2210	Family Food Center (Jaswant S Chera)	Madera	0.51	Exempt/Low
S	1085	Famoso Travel Center	Mcfarland	0.51	Exempt/Low
C	3488	Fareast Inc.	Fresno	0.51	Exempt/Low
S	816	Farmers Food Market	Poplar	0.51	Exempt/Low
C	3678	Farmers Market	Madera	0.51	Exempt/Low
N	9480	Farmer's Quick Stop	Dos Palos	0.67	Exempt/Low
S	6484	Farmersville Food Mart	Farmersville	0.67	Exempt/Low
C	270	Fashion Fair Chevron	Fresno	0.62	Exempt/Low
N	4120	Fast And Easy Mart #101 (Muhammad Bilal)	Modesto	1.63	Intermediate
C	430	Fast And Friendly	Armona	0.51	Exempt/Low
S	2454	Fast Break Abdul Aziz	Bakersfield	0.51	Exempt/Low
N	6517	Fast Lane Central Valley, LLC	Lathrop	1.08	Intermediate
C	1766	Fast N Esy #10	Madera	2.01	Intermediate
C	2435	Fast N Esy #11	Fresno	1.94	Intermediate
N	4085	Fast N Esy #12 (Vinay Vohra)	Atwater	2.41	Intermediate
C	1338	Fast N Esy #14	Fresno	1.13	Intermediate

2022 Annual Report on the District's Air Toxics Program

Region	Facility ID	Facility Name	City	Prioritization Score	Prioritization Category
C	1229	Fast N Esy #15	Kingsburg	0.95	Exempt/Low
N	8806	Fast N Esy #16	Manteca	0.76	Exempt/Low
C	8752	Fast N Esy #20	Fresno	1.05	Intermediate
C	1395	Fast N Esy #21	Fresno	0.54	Exempt/Low
N	8721	Fast N Esy #27	Merced	0.57	Exempt/Low
C	4024	Fast N Esy #31	Fresno	1.13	Intermediate
C	295	Fast N Esy #6	Fresno	1.09	Intermediate
C	7877	Fast N Esy #7	Fresno	1.20	Intermediate
C	1278	Fast N Esy 17 Corporation	Fresno	1.06	Intermediate
C	3512	Fast N Esy 18 Corporation	Fresno	1.51	Intermediate
C	1230	Fast N Esy 22 Corp Dba Fast N Esy 24	Fresno	0.65	Exempt/Low
C	8599	Fast N Esy 22 Corporation	Fresno	0.78	Exempt/Low
C	1958	Fast N Esy 23 Corporation	Fresno	0.51	Exempt/Low
C	3566	Fast N Esy 26 Corporation	Fresno	0.59	Exempt/Low
C	3895	Fast N Esy 28 Corporation	Fresno	0.79	Exempt/Low
C	3724	Fast N Esy 29	Fresno	0.53	Exempt/Low
C	301	Fast N Esy 4 Corporation	Fresno	0.87	Exempt/Low
C	294	Fast N Esy 5 Corporation	Fresno	0.83	Exempt/Low
C	7136	Fast N Esy 9 Corporation	Clovis	0.80	Exempt/Low
S	8166	Fast N Esy li Inc.- Dba Fast N Esy #13	Tulare	7.04	Intermediate
C	485	Fast Trip Food Store	Mendota	2.16	Intermediate
S	667	Fast Way Market	Richgrove	0.51	Exempt/Low
C	484	Fastrip Food Store	Fresno	2.14	Intermediate
C	483	Fastrip Food Store	Fresno	2.66	Intermediate
C	482	Fastrip Food Store #4-890	Coalinga	3.36	Intermediate
S	476	Fastrip Oil Co	Delano	0.51	Exempt/Low
S	3033	Fastrip Oil Co	Earlimart	1.64	Intermediate
S	2357	Fastrip Oil Co	Lamont	1.71	Intermediate
S	6512	Fastrip Oil Co	Taft	3.06	Intermediate
S	2067	Fastrip Oil Co	Bakersfield	3.58	Intermediate
C	2765	Fastrip Oil Co Lp	Kerman	3.57	Intermediate
C	3053	Fastrip Oil Co, L P	Lemoore	9.39	Intermediate
C	3110	Fastrip Oil Company	Riverdale	0.69	Exempt/Low
C	3166	Fastrip Oil Company L P	Sanger	6.67	Intermediate
C	1741	Fastway Market	Madera	0.51	Exempt/Low
S	1262	Fiesta Liquor And Gas	Bakersfield	0.51	Exempt/Low
C	89	Fifth Wheel Truck Stop Inc.	Fresno	0.67	Exempt/Low
C	2140	Firebaugh Mart LLC	Firebaugh	0.51	Exempt/Low
C	2319	Firouza Inc.	Hanford	0.53	Exempt/Low

2022 Annual Report on the District's Air Toxics Program

Region	Facility ID	Facility Name	City	Prioritization Score	Prioritization Category
N	97	First Evergreen Oil Corp Db Tiwana Gas	Stockton	0.90	Exempt/Low
N	1902	Five Minute Car Wash	Modesto	2.05	Intermediate
C	877	Five Stars Market	Five Points	0.67	Exempt/Low
N	714	Flag City Chevron (Stars Holding Co LLC)	Lodi	0.97	Exempt/Low
N	102	Flyers Energy LLC	Stockton	0.51	Exempt/Low
S	2182	Flyers Energy LLC	Bakersfield	0.51	Exempt/Low
S	751	Flyers Energy LLC	Bakersfield	0.51	Exempt/Low
N	128	Flyers Energy, LLC	Manteca	0.51	Exempt/Low
C	8012	Foods Co #316	Fresno	3.75	Intermediate
C	7990	Foods Co #339	Fresno	2.37	Intermediate
S	7794	Foods Co #384	Bakersfield	1.91	Intermediate
N	1247	Forebay Chevron	Santa Nella	1.12	Intermediate
S	1032	Four Seasons Handy Market	Visalia	0.90	Exempt/Low
S	2437	Four Veer Inc. Db Rosedale Chevron	Bakersfield	1.31	Intermediate
S	2139	Fox Petroleum Inc.	Shafter	2.59	Intermediate
S	616	Frank's Stop & Go Market	Porterville	0.51	Exempt/Low
S	1571	Freeway Express Mart (B Dhaliwal Inc.)	Bakersfield	0.51	Exempt/Low
C	1117	Fresno 99 Investments LLC	Fresno	8.75	Intermediate
C	532	Fresno Ashlan Gas & Mart	Fresno	0.90	Exempt/Low
C	2797	Fresno Central Market	Fresno	0.51	Exempt/Low
C	3790	Fresno Elite Carwash Inc.	Fresno	0.76	Exempt/Low
C	500	Fresno Gas And Liquor	Fresno	0.51	Exempt/Low
C	3299	Fresno Highway Fuels Inc.	Fresno	0.90	Exempt/Low
C	8710	Fresno Mall 76	Fresno	1.06	Intermediate
C	3970	Fresno Mckinley Arco	Fresno	5.83	Intermediate
C	3120	Fresno Petroleum Inc.	Fresno	0.54	Exempt/Low
N	3130	Frias Union Service	Patterson	1.28	Intermediate
S	7384	Friendly Liquor	Porterville	0.51	Exempt/Low
N	1921	Fruit Yard Produce Stand	Modesto	1.53	Intermediate
C	8844	Fueling Convenience Inc.	Fresno	0.75	Exempt/Low
N	9475	Fulkerth Chevron	Turlock	1.09	Intermediate
C	654	G Mart	Fresno	0.72	Exempt/Low
S	2046	G&G Oil Group, Inc. (Db Arco #42542)	Bakersfield	1.68	Intermediate
S	458	G1 Mart	Lindsay	0.67	Exempt/Low
C	2346	Garreks Inc.	Clovis	2.09	Intermediate
C	3153	Garreks Inc. Db Bubble Clean	Fresno	1.19	Intermediate
C	77	Gas & Food Shop #3406	Fresno	0.85	Exempt/Low

2022 Annual Report on the District's Air Toxics Program

Region	Facility ID	Facility Name	City	Prioritization Score	Prioritization Category
S	457	Gas & Goodies	Tulare	0.51	Exempt/Low
S	2784	Gas 4 Less	Bakersfield	0.13	Exempt/Low
N	4372	Gas City (Balwinder Singh)	Modesto	0.91	Exempt/Low
N	1930	Gas Plus Mini Mart (Kamal Preet Kaur)	Modesto	0.51	Exempt/Low
S	2075	Gas Ranch Mini Mart	Woodlake	0.67	Exempt/Low
S	8897	Gas-N-Save Mini Mart Db Arrow Gas Marke	Bakersfield	0.51	Exempt/Low
S	1002	Gasoline Alley	Woodlake	0.67	Exempt/Low
C	1793	Gateway & Olive Investments Db Gateway	Madera	0.66	Exempt/Low
N	2298	Gawfco Enterprises Inc.	Westley	1.86	Intermediate
N	3466	George's Mini-Mart	Lockeford	1.00	Exempt/Low
S	1286	Gerges Oil, Inc. Db Gerges Chevron	Taft	0.51	Exempt/Low
C	1149	Get-N-Go	Fresno	0.84	Exempt/Low
C	3619	Get-N-Go #4	Fresno	0.51	Exempt/Low
S	3614	Gh Food Mart Inc./Complete Convenience Ct	Delano	1.02	Intermediate
C	3874	Ghs Brothers	Fresno	0.72	Exempt/Low
C	1296	Ghs Brothers Db Xpress Food Mart	Fresno	1.00	Exempt/Low
C	165	Ghs Brothers Db Xpress Food Mart 2	Fresno	0.51	Exempt/Low
S	965	Gifford's Market	Springville	0.51	Exempt/Low
S	666	Gil Duyst & Son Inc.	Visalia	8.34	Intermediate
N	5102	Gill Bros Inc.	Ceres	1.59	Intermediate
S	602	Gill Food Mart And Gas	Visalia	0.85	Exempt/Low
C	574	Gill's Texaco	Caruthers	0.67	Exempt/Low
C	4378	Gill's Truck Stop	Hanford	1.49	Intermediate
C	1754	Gmg Food Store #101	Madera	0.84	Exempt/Low
N	4293	Golden Bear Gas	Stockton	0.67	Exempt/Low
C	1541	Golden Boy Market	Fresno	0.51	Exempt/Low
C	3744	Golden Doaba Ent LLC Db Am/Pm 82072	Fresno	2.77	Intermediate
C	8017	Golden Doaba Enterprises LLC	Fresno	0.48	Exempt/Low
S	1030	Golden Filling Station Db Farmersville	Farmersville	0.51	Exempt/Low
S	592	Golden Rissco Inc. Db Caldwell Chevron	Visalia	0.51	Exempt/Low
N	5073	Golden State Chevron	Turlock	0.37	Exempt/Low
S	1667	Golden State Mobil	Bakersfield	0.51	Exempt/Low
S	931	Goshen Travel Plaza	Goshen	0.51	Exempt/Low
N	639	Govinder S. Atwal	Lodi	0.51	Exempt/Low
N	5112	Granada Fuel & Food, Inc.	Santa Nella	1.14	Intermediate

2022 Annual Report on the District's Air Toxics Program

Region	Facility ID	Facility Name	City	Prioritization Score	Prioritization Category
S	2064	Grand Avenue Coast Inc.	Bakersfield	1.55	Intermediate
C	1255	Grand Convenient Stores	Fresno	5.83	Intermediate
C	8735	Grand Petroleum Inc.	Firebaugh	0.45	Exempt/Low
N	1818	Grand Petroleum Inc.	Modesto	1.05	Intermediate
C	3613	Grangeville Market	Hanford	0.51	Exempt/Low
N	1228	Great America Gas & Food	Livingston	0.51	Exempt/Low
C	169	Greener Car Cleaner (Db: Bubble Wash)	Selma	0.51	Exempt/Low
S	8067	Greg's Petroleum	Shafter	1.03	Intermediate
N	372	Grewal's Gas & Liquor	Stockton	0.70	Exempt/Low
S	324	Griffin Gas Liquor & Food	Tulare	0.51	Exempt/Low
N	9259	Grin Investments Inc.	Stockton	2.54	Intermediate
N	1792	Grip And Go	Modesto	0.67	Exempt/Low
N	1958	G's Food Mart	Patterson	0.67	Exempt/Low
N	454	Gsg Gas And Mart	Stockton	0.51	Exempt/Low
S	1934	Gun C Oh	Bakersfield	0.77	Exempt/Low
N	9466	Gurinder Singh	Modesto	5.83	Intermediate
N	9334	Gurpreet Sandhu	Manteca	1.85	Intermediate
C	3473	Guru Gas & Market Inc.	Huron	0.51	Exempt/Low
N	8851	Gustine Chevron	Gustine	0.64	Exempt/Low
C	9368	Gutherie's Chevron Mini Mart	Madera	0.64	Exempt/Low
C	9374	H & S Business Center	Sanger	2.08	Intermediate
S	238	H & S Chevron Food Mart Inc.	Arvin	0.51	Exempt/Low
N	1106	H & S Energy Products #3038	Lockeford	0.93	Exempt/Low
N	859	H & S Energy Products, #3034	Manteca	0.51	Exempt/Low
N	3591	H & S Energy Products, #3035	Lathrop	1.94	Intermediate
C	1768	H&R Families Inc. Db: Chowchilla Chevron	Chowchilla	1.11	Intermediate
N	621	H&S Energy Products, LLC # 3081	Stockton	1.74	Intermediate
N	387	Hammer I-5 Am/Pm	Stockton	5.83	Intermediate
C	7716	Hanco77	Hanford	3.66	Intermediate
N	1209	Handi Stop	Merced	0.51	Exempt/Low
C	1085	Handi Stop #9	Fresno	0.76	Exempt/Low
C	613	Handi Stop Market	Fresno	0.51	Exempt/Low
C	2095	Handi Stop/Vinod Nijhawan	Clovis	0.51	Exempt/Low
C	9459	Handi-Stop	Caruthers	1.67	Intermediate
C	813	Hanford Liquor And Food Mart	Hanford	0.51	Exempt/Low
C	614	Hanford Tri Mart Inc.	Hanford	0.51	Exempt/Low
C	9056	Hanjrah Inc. Db: Arco Am Pm	Coalinga	1.25	Intermediate
S	2054	Happy Gas & Mini Mart	Bakersfield	0.51	Exempt/Low
S	911	Harbans Singh Grewal	Mcfarland	0.51	Exempt/Low

2022 Annual Report on the District's Air Toxics Program

Region	Facility ID	Facility Name	City	Prioritization Score	Prioritization Category
N	9218	Harinder Singh Bhatia	Modesto	4.55	Intermediate
S	4547	Hari's Market	Porterville	0.51	Exempt/Low
C	90	Harjit Singh & Davinderpal Sangha	Fresno	1.38	Intermediate
C	2312	Harmon Star Mart #2 (Avtar Singh)	Fresno	0.51	Exempt/Low
N	3912	Harnam Corporation	Tracy	4.87	Intermediate
N	8692	Haroon Al Rashid, Rahman Gas & Market	Ceres	0.51	Exempt/Low
C	1733	Harpreet S Sidhu Dba Mexicali Market	Madera	0.67	Exempt/Low
C	617	Harris Ranch	Coalinga	2.79	Intermediate
C	1680	Harry's Liquor & Gas (Ravinder Kaur)	Madera	0.70	Exempt/Low
N	9188	Harsarb Inc.	Los Banos	0.64	Exempt/Low
S	455	Harvin Fuel Inc.	Terra Bella	0.51	Exempt/Low
N	771	Harvinder Pal Singh - Kettleman Chevron	Lodi	1.70	Intermediate
C	7954	Headlining Shopping Center LLC	Fresno	0.72	Exempt/Low
C	3544	Helm Liquor Market	Helm	0.67	Exempt/Low
S	3524	Henderson Ave Chevron (Taha Saleh)	Porterville	0.75	Exempt/Low
S	8816	Highland Manor	Oildale	0.51	Exempt/Low
N	2163	Hk 1313 Petroleum, Inc.	Modesto	1.76	Intermediate
N	8829	Hk 1313 Petroleum, Inc.	Modesto	2.73	Intermediate
C	2182	Home Away Inc. Dba The Pines Resort	Bass Lake	0.51	Exempt/Low
S	4674	Howards Mini Mart #6	Bakersfield	0.61	Exempt/Low
C	702	Hsg Farmers Inc. (Johnny Quik 149)	Clovis	1.00	Exempt/Low
S	7539	Hungry's Market	Bakersfield	0.67	Exempt/Low
N	2308	Hunt & Sons Inc.	Oakdale	1.98	Intermediate
N	2306	Hunt & Sons Inc.	Modesto	0.67	Exempt/Low
N	1089	Hunt & Sons Inc. - Arch Road Cardlock	Stockton	0.51	Exempt/Low
N	4198	Hunt & Sons Inc.- Service Road Cardlock	Ceres	0.67	Exempt/Low
S	112	Hwj Enterprizes Inc. Dba Samco Ca #4	Bakersfield	0.90	Exempt/Low
S	1865	Hwy 58 Fuel Stop	Bakersfield	0.51	Exempt/Low
C	2965	Ice Bucket	Coalinga	0.95	Exempt/Low
S	3509	In & Out Food Mart	Visalia	8.75	Intermediate
S	7522	Inderjit Inc.	Wasco	0.51	Exempt/Low
S	2023	Indie Co	Bakersfield	1.48	Intermediate
N	9348	Interstate A Enterprises Inc.	Lathrop	0.51	Exempt/Low

2022 Annual Report on the District's Air Toxics Program

Region	Facility ID	Facility Name	City	Prioritization Score	Prioritization Category
S	822	Ivanhoe Mini Mart	Ivanhoe	0.51	Exempt/Low
S	976	Ivanhoe Speedy Mart	Ivanhoe	0.51	Exempt/Low
N	8854	Iyr Petroleum Inc.	Modesto	0.92	Exempt/Low
N	1156	J & B Body Shop	Stockton	0.05	Exempt/Low
C	762	J & T Junction Corp	Kingsburg	0.85	Exempt/Low
S	4148	J And J Liquor Stop Number 1	Bakersfield	0.51	Exempt/Low
S	3093	J And K Food Mart Inc.	Bakersfield	1.07	Intermediate
N	4975	J D Singh Service Stations, Inc.	Thornton	8.75	Intermediate
C	52	J L Gas And Food	Fresno	1.77	Intermediate
N	3978	J N S Market Liquor & Gas	Dos Palos	0.67	Exempt/Low
S	2348	J Street Mini Mart	Tulare	0.51	Exempt/Low
N	4291	J&D Property, LLC Db Hughson Chevron	Hughson	0.89	Exempt/Low
N	1815	J&N Petroleum Inc.	Turlock	1.44	Intermediate
C	1011	J. Market And Gas	Reedley	0.51	Exempt/Low
S	330	Jack Griggs Inc.	Porterville	0.51	Exempt/Low
C	3373	Jack's Car Wash	Fresno	1.58	Intermediate
C	3293	Jack's Gas	Fresno	5.83	Intermediate
C	2306	Jack's Gas #2	Easton	0.78	Exempt/Low
C	734	Jacks Gas #4	Hanford	0.51	Exempt/Low
N	2059	Jacks Gas #5	Newman	1.10	Intermediate
S	818	Jack's Gas #7	Woodlake	0.51	Exempt/Low
S	3608	Jack's Git N Go	Tulare	0.56	Exempt/Low
S	8272	Jacks Liquor Store & Fueling	Visalia	0.67	Exempt/Low
C	674	Jacks Mart	Fresno	0.64	Exempt/Low
N	902	Jackson Energy	Stockton	1.65	Intermediate
S	2384	Jaco Hill	Bakersfield	1.27	Intermediate
S	2392	Jaco Hill	Bakersfield	2.01	Intermediate
S	2360	Jaco Hill	Wasco	2.23	Intermediate
S	2382	Jaco Hill	Bakersfield	2.33	Intermediate
S	2394	Jaco Hill	Bakersfield	2.65	Intermediate
S	2369	Jaco Hill	Shafter	3.07	Intermediate
S	2380	Jaco Hill	Bakersfield	3.33	Intermediate
S	2389	Jaco Hill	Bakersfield	4.19	Intermediate
S	2396	Jaco Hill	Bakersfield	6.20	Intermediate
S	2377	Jaco Hill Co	Bakersfield	0.51	Exempt/Low
S	2372	Jaco Hill Co	Lamont	0.57	Exempt/Low
S	2359	Jaco Hill Co	Arvin	0.82	Exempt/Low
S	2363	Jaco Hill Co	Taft	0.89	Exempt/Low
S	937	Jaco Hill Co	Tulare	1.14	Intermediate
S	2355	Jaco Hill Co	Wasco	1.38	Intermediate

2022 Annual Report on the District's Air Toxics Program

Region	Facility ID	Facility Name	City	Prioritization Score	Prioritization Category
S	2390	Jaco Hill Co	Bakersfield	1.93	Intermediate
S	2371	Jaco Hill Co	Bakersfield	2.78	Intermediate
S	2370	Jaco Hill Co	Bakersfield	4.31	Intermediate
C	891	Jaco Hill Company	Orange Cove	0.89	Exempt/Low
C	670	Jaco Hill Company	Caruthers	0.92	Exempt/Low
S	636	Jaco Oil Co	Farmersville	7.77	Intermediate
S	2558	Jaco Oil DbA Fastrip Station	Bakersfield	5.11	Intermediate
N	4246	Jadwinder Singh	Patterson	8.75	Intermediate
C	1275	Jagtar Singh Brar DbA Hanford 76	Hanford	0.55	Exempt/Low
N	3406	Jahant Food & Fuel Stop	Acampo	1.15	Intermediate
S	2365	Jamieson Hill	Bakersfield	0.75	Exempt/Low
S	2387	Jamieson Hill	Bakersfield	1.69	Intermediate
S	2374	Jamieson Hill	Lamont	1.70	Intermediate
S	2393	Jamieson Hill	Taft	1.83	Intermediate
S	2399	Jamieson Hill	Lindsay	1.95	Intermediate
S	2361	Jamieson Hill	Bakersfield	2.43	Intermediate
S	2383	Jamieson Hill	Arvin	2.53	Intermediate
S	2373	Jamieson Hill	Bakersfield	2.68	Intermediate
S	2386	Jamieson Hill	Bakersfield	2.91	Intermediate
S	2397	Jamieson Hill	Bakersfield	3.00	Intermediate
S	2395	Jamieson Hill	Delano	3.16	Intermediate
S	2381	Jamieson Hill	Bakersfield	3.78	Intermediate
S	2375	Jamieson Hill	Bakersfield	4.64	Intermediate
N	3775	Jammu & Kashmir Inc./D&S Gas & Mini Mart	Legrand	0.51	Exempt/Low
N	66	Jass Enterprises Inc. - Am/Pm Woodbridge	Woodbridge	2.09	Intermediate
S	2457	Jasuir Singh Sohal-Kwik Korner	Dinuba	0.55	Exempt/Low
N	9650	Javier Galvan West Main Partners LLC	Turlock	8.75	Intermediate
N	535	Jay Mcillrath	Stockton	0.51	Exempt/Low
N	2658	Jbs Petro Inc.	Lodi	0.89	Exempt/Low
S	8259	Jeev Global Inc.	Tulare	1.44	Intermediate
S	3743	Jeffries Brothers	Bakersfield	1.14	Intermediate
S	3117	Jeffries Brothers	Bakersfield	1.32	Intermediate
S	3489	Jeffries Brothers Inc.	Wasco	0.51	Exempt/Low
S	2417	Jeffries Brothers Inc.	Shafter	0.51	Exempt/Low
S	2414	Jeffries Brothers Inc.	Taft	0.52	Exempt/Low
C	1053	Jensen Shell	Fresno	0.78	Exempt/Low
C	675	Jet Stop Inc.	Huron	0.67	Exempt/Low
C	3921	Jgss Food Service Inc.	Fowler	3.38	Intermediate

2022 Annual Report on the District's Air Toxics Program

Region	Facility ID	Facility Name	City	Prioritization Score	Prioritization Category
S	1729	Jhaj & Brar Investment Inc.	Lost Hills	5.83	Intermediate
C	2825	Jiffy Food	Coalinga	0.51	Exempt/Low
C	475	Jiffy Food Stop	Easton	0.51	Exempt/Low
C	1752	Jiffy Market Food Store	Chowchilla	0.51	Exempt/Low
S	239	Jiffy's Store	Shafter	0.51	Exempt/Low
S	1277	Jkcm Corp DbA Jk Gas And Mart	Delano	0.51	Exempt/Low
C	3483	Jkr Ventures Inc. DbA R & S Mini Mart	Fresno	0.96	Exempt/Low
S	480	Jobrn Inc.	Bakersfield	0.55	Exempt/Low
C	1715	Joes Food Mart	Chowchilla	0.60	Exempt/Low
N	7849	Joes Food Mart	Modesto	0.82	Exempt/Low
N	435	Joe's Travel Plaza	Lathrop	0.67	Exempt/Low
N	4839	Joe's Travel Plaza - Westley	Westley	7.07	Intermediate
S	591	Joe's Westside Market	Porterville	0.62	Exempt/Low
S	8475	John & Suzie Cross Kennedy Meadows Gs	Inyokern	0.26	Exempt/Low
C	1185	Johnny Liquor Food Store	Sanger	0.51	Exempt/Low
C	9545	Johnny Quick #207	Fresno	0.97	Exempt/Low
C	3304	Johnny Quik 163	Fresno	5.83	Intermediate
C	7545	Johnny Quik Food Store	Clovis	1.86	Intermediate
C	695	Johnny Quik Food Store #109	Fresno	0.51	Exempt/Low
C	6986	Johnny Quik Food Store #189	Fowler	5.83	Intermediate
S	1289	Johnny's Foodmart	Bakersfield	1.16	Intermediate
C	3043	Josan & Josan Inc. DbA Selma Arco-Ampm	Selma	3.16	Intermediate
C	2324	Josan & Josan, Inc. DbA Hwy 41 Arco Ampm	Madera	2.47	Intermediate
C	9341	Josan Investment, Inc.	Lemoore	2.15	Intermediate
N	3828	Jsks Enterprises Inc. DbA Arco Am Pm	Manteca	3.07	Intermediate
C	1273	Jst LLC	Fresno	0.81	Exempt/Low
C	1297	Jst LLC	Fresno	1.20	Intermediate
N	757	Judge & Kap Petroleum Inc. DbA Gavinko Ga	Stockton	0.99	Exempt/Low
C	4884	K - C Market	Kettleman City	0.66	Exempt/Low
C	707	K & H Liquor And Food	Lemoore	0.51	Exempt/Low
S	744	K & K Mart	Mcfarland	0.51	Exempt/Low
S	1449	K & S Food Store	Bakersfield	0.60	Exempt/Low
N	1710	K S Chandi & Sons	Modesto	3.54	Intermediate
C	56	Kailey Fuels Inc. (Arco Am Pm)	Fresno	2.53	Intermediate
N	6572	Kamal Dhaliwal	Atwater	4.11	Intermediate
S	938	Kamlesh Rani	Pixley	0.51	Exempt/Low

2022 Annual Report on the District's Air Toxics Program

Region	Facility ID	Facility Name	City	Prioritization Score	Prioritization Category
N	9026	Kaptan Gas & Food	Oakdale	0.85	Exempt/Low
S	975	Kdg Capital LLC Dba Sierra Sporting Goo	Exeter	0.51	Exempt/Low
S	1004	Ken's Chinowth Git & Go	Visalia	0.95	Exempt/Low
N	452	Kent's Oil Service Inc.	Stockton	4.42	Intermediate
C	716	Kerman Carwash Inc.	Kerman	0.77	Exempt/Low
N	5278	Kesar Petroleum Inc.	Stockton	0.28	Exempt/Low
C	55	Kettleman City Mobil Inc.	Kettleman City	1.05	Intermediate
S	6850	Kevin Stores Inc. Dba Hillside Liquor	Bakersfield	0.51	Exempt/Low
N	456	King Island Marina	Stockton	1.84	Intermediate
N	5100	Kingdon Airport LLC	Lodi	0.05	Exempt/Low
N	5126	Kings Market	Hilmar	0.51	Exempt/Low
C	1281	Kings River Sinclair	Reedley	2.09	Intermediate
C	3808	Kingsburg Food Mart	Kingsburg	0.57	Exempt/Low
N	1042	Kpmc Management Inc. Dba: Arco Cherokee	Lodi	0.66	Exempt/Low
S	3127	Kulwant Khaira Dba C&E Market	Tulare	0.51	Exempt/Low
C	1886	Kwik Korner	Reedley	0.51	Exempt/Low
S	1008	Kwik Korner Market	Orosi	0.67	Exempt/Low
C	92	Kwik Serv	Fresno	0.51	Exempt/Low
N	3277	Kwik Serv Lodi, B&W 113	Lodi	0.51	Exempt/Low
C	4225	Kwik Serve	Fresno	2.15	Intermediate
N	433	La Favorita, California Corporation	French Camp	0.51	Exempt/Low
C	6922	La Plaza 24, Inc.	Madera	0.51	Exempt/Low
S	2496	Lakhhbir Singh Dba Cornerstone Market	Dinuba	0.70	Exempt/Low
S	1573	Larson Food Store	Bakersfield	0.00	Exempt/Low
N	3486	Lathrop Gas & Food Inc.	Lathrop	2.24	Intermediate
N	134	Lathrop Shell (Arbabian Family LLC)	Lathrop	1.38	Intermediate
S	3796	Lemon Cove Market	Lemon Cove	0.51	Exempt/Low
C	7380	Lemoore Crossing	Lemoore	0.51	Exempt/Low
C	1289	Lemoore Mobil (Foeng Yam)	Lemoore	0.51	Exempt/Low
N	1322	Lemos Entr. LLC/M&M Corner Mini Mart	Delhi	1.01	Intermediate
S	3562	Lerdo Chevron	Shafter	0.03	Exempt/Low
S	1513	Linder Equipment Co	Tulare	0.08	Exempt/Low
S	4188	Lindsay Chevron	Lindsay	5.83	Intermediate
S	3697	Lindsay Food Mart	Lindsay	0.82	Exempt/Low
S	9195	Lindsay Unified School District	Lindsay	0.51	Exempt/Low

2022 Annual Report on the District's Air Toxics Program

Region	Facility ID	Facility Name	City	Prioritization Score	Prioritization Category
N	3273	Livingston Gas And Grocery	Livingston	0.54	Exempt/Low
S	9202	Lkmp Properties	Shafter	0.56	Exempt/Low
N	4773	Lodi Airport	Acampo	0.63	Exempt/Low
N	203	Lodi Food And Liquor	Lodi	0.51	Exempt/Low
N	5016	Lodi Valley Petroleum Inc.	Lodi	0.51	Exempt/Low
C	9402	Loma Vista Petroleum, Inc.	Clovis	2.95	Intermediate
N	1289	Los Banos Shell	Los Banos	1.18	Intermediate
N	1188	Los Camperos Inc. Dba Buy N Save	Los Banos	0.51	Exempt/Low
C	8054	Los Primos Market	Laton	0.51	Exempt/Low
S	1310	Lost Hills Travel Center Inc.	Lost Hills	1.79	Intermediate
S	767	Lovejot Singh & Jagjit Singh	Visalia	0.51	Exempt/Low
S	3957	Lovers Lane Food Mart	Visalia	0.59	Exempt/Low
N	4477	Love's Country Store Of California #223	Ripon	4.34	Intermediate
N	8912	Love's Country Stores Of Ca	Lodi	0.75	Exempt/Low
S	4025	Love's Country Stores Of Calif #230	Lost Hills	4.55	Intermediate
S	7567	Love's Travel Stop- #382	Tulare	2.06	Intermediate
C	9522	Love's Travel Stop #736	Madera	3.44	Intermediate
N	4378	Loves Travel Stops & Country Stores	Santa Nella	2.33	Intermediate
C	2394	Lucky 7	Madera	0.51	Exempt/Low
S	8632	Lucky 7	Bakersfield	0.51	Exempt/Low
S	2144	Lucky 7 #1	Delano	0.51	Exempt/Low
S	2958	Lucky 7 #2 Food Mart	Delano	0.51	Exempt/Low
C	991	Lucky Gas & Liquor	Fresno	0.61	Exempt/Low
S	1559	Lucky Seven #3	Bakersfield	0.51	Exempt/Low
N	1299	M & A Market	Merced	0.51	Exempt/Low
N	8199	M & B Petroleum	Modesto	2.93	Intermediate
N	1298	M.G. Santos, Inc., Texaco #2	Los Banos	0.88	Exempt/Low
C	3148	Madera Valero Gas & Food (Aahil Entrprs)	Madera	0.67	Exempt/Low
C	1726	Madtown Dino Mart	Madera	0.56	Exempt/Low
N	7715	Main St Chevron Turlock Project Inc.	Turlock	1.08	Intermediate
C	1035	Majha Business Solutions	Fresno	0.74	Exempt/Low
C	2888	Mallah Inc.	Fresno	0.63	Exempt/Low
N	8641	Mann Bros Truck Stop Inc.	Modesto	0.17	Exempt/Low
N	850	Manteca Liquor & Food	Manteca	0.64	Exempt/Low
N	9391	Manteca Petroleum, Inc.	Manteca	3.95	Intermediate
N	4339	Manu Deen Bani, Inc.	Snelling	0.51	Exempt/Low

2022 Annual Report on the District's Air Toxics Program

Region	Facility ID	Facility Name	City	Prioritization Score	Prioritization Category
N	9302	March & March LLC	Stockton	0.67	Exempt/Low
S	2181	Market Express One Inc.	Bakersfield	0.51	Exempt/Low
N	4580	Marks Fuel & Food Inc. (Dba: Arco Victor)	Lodi	5.83	Intermediate
N	3956	Maxi Mart	Atwater	0.78	Exempt/Low
S	8951	Mcauliff Center Lp	Visalia	1.25	Intermediate
S	222	Mcfarland Chevron	Mcfarland	1.10	Intermediate
N	2281	Mchenry 76 & Food Mart	Modesto	0.66	Exempt/Low
N	4049	Mchenry Cruisers #10	Modesto	2.96	Intermediate
N	2263	Mchenry Shell	Modesto	0.51	Exempt/Low
N	86	Mcm14 Corp	Stockton	2.77	Intermediate
C	993	Meerpur Inc.	Fresno	0.51	Exempt/Low
C	3200	Mendota Food Mart	Mendota	0.67	Exempt/Low
N	1184	Merced Fuel & Food (Akshat Sharma)	Merced	5.83	Intermediate
N	1201	Merced Mall Chevron	Merced	1.59	Intermediate
N	7168	Merced River Development Inc.	Snelling	0.72	Exempt/Low
S	225	Mesa Marin Chevron	Bakersfield	0.19	Exempt/Low
S	2236	Metro Mart	Bakersfield	0.51	Exempt/Low
S	1448	Midway Market & Liquor	Lake Of The Wds	0.51	Exempt/Low
C	837	Mighty Mart	Sanger	2.82	Intermediate
S	8343	Mighty Mike's Gas, Inc.	Plainview	0.51	Exempt/Low
S	8989	Millbrook Gas Station	Bakersfield	8.75	Intermediate
C	2202	Millerton General Store	Clovis	0.51	Exempt/Low
S	2048	Ming Business Inc.	Bakersfield	1.53	Intermediate
N	549	Miracle Mile Market	Stockton	0.61	Exempt/Low
C	3611	Mission Gas N Go Inc.	Madera	3.05	Intermediate
C	843	Mission Plaza	Parlier	0.61	Exempt/Low
N	4569	Mitchell Gas & Lube	Ceres	5.83	Intermediate
S	8900	Mlh Enterprise	Bakersfield	1.80	Intermediate
N	9350	Mobil Exxon Gas And Mini Mart	Patterson	0.53	Exempt/Low
N	175	Mobil Stockton #1/Abdo Nashir	Stockton	0.88	Exempt/Low
S	1038	Moe's Quickstop	Orosi	0.51	Exempt/Low
N	1353	Mohamed M Obeid Dba Richard's Market & L	Gustine	0.51	Exempt/Low
N	1744	Monte Vista Petroleum Inc.	Turlock	5.83	Intermediate
C	1799	Monty's Liquor	Madera	0.51	Exempt/Low
S	1061	Mooney Shell	Visalia	0.51	Exempt/Low
N	2406	Morada Chevron Fast N Easy Go	Stockton	1.93	Intermediate
S	2304	Morton Express Mini Mart	Porterville	0.51	Exempt/Low

2022 Annual Report on the District's Air Toxics Program

Region	Facility ID	Facility Name	City	Prioritization Score	Prioritization Category
N	9562	Mo's Oasis Market	Hughson	1.00	Exempt/Low
N	125	Mossdale Chevron (Sksp Inc.)	Lathrop	1.46	Intermediate
S	589	Mota's Mini Mart	Ivanhoe	0.51	Exempt/Low
S	8913	Mountain View Inc.	Bakersfield	0.66	Exempt/Low
S	2776	Mountview Inc.	Bakersfield	0.98	Exempt/Low
S	3220	Mountview Inc.	Bakersfield	1.07	Intermediate
S	2230	Mpcn Corp DbA Super Food Mart	Bakersfield	0.51	Exempt/Low
N	334	Mss-Petro Inc. DbA Flames Liquor & Gas	Lodi	0.97	Exempt/Low
C	853	Mt Whitney Mini Mart	Riverdale	0.51	Exempt/Low
C	3479	Mtn View Gas & Mart (Bhandal Inc.)	Selma	1.15	Intermediate
S	747	Mueer M Saeed- Edison Mini Mart	Edison	0.51	Exempt/Low
S	2102	Munn Chau DbA Stockdale Food Mart	Bakersfield	0.73	Exempt/Low
S	4289	Munni Ji LLC DbA Tipton Shell	Tipton	0.52	Exempt/Low
S	8342	Murray Family Farms	Bakersfield	0.01	Exempt/Low
S	3267	Muthana li Corp DbA Obie's Downtown	Bakersfield	1.08	Intermediate
S	2492	N & S Mini Market	Porterville	0.67	Exempt/Low
S	9171	N Square	Goshen	5.71	Intermediate
C	3579	Nas Partnership DbA Six Star Food Mart	Madera	1.33	Intermediate
S	5420	Natalie Enterprises Inc. DbA Tadros Marke	Tulare	5.83	Intermediate
N	378	National Petroleum Manteca	Manteca	1.04	Intermediate
N	3957	National Petroleum Patterson	Patterson	8.75	Intermediate
C	3509	Navjeet Singh	Clovis	2.92	Intermediate
S	4293	Nelson's Corner LLC	Springville	0.51	Exempt/Low
N	4518	New Olive Market	Atwater	0.51	Exempt/Low
C	1290	Neya Inc.	Fresno	1.35	Intermediate
S	471	Niles Market	Bakersfield	0.51	Exempt/Low
N	2009	Nirmal Kaur DbA Waterford Market	Waterford	0.51	Exempt/Low
C	1141	Nirmal Singh Shop N Quick Inc.	Fresno	0.54	Exempt/Low
S	734	Nizar Karimi	Visalia	0.51	Exempt/Low
N	738	North Pole Gas & Food Inc.	Tracy	1.25	Intermediate
C	1128	Northgate Shell	Fresno	1.97	Intermediate
C	39	Nskb Investments Inc. DbA Sb Market	Fresno	1.92	Intermediate
C	2441	O C Citrus Mini Mart	Orange Cove	0.51	Exempt/Low
N	2072	Oakdale Municipal Airport	Oakdale	2.51	Intermediate

2022 Annual Report on the District's Air Toxics Program

Region	Facility ID	Facility Name	City	Prioritization Score	Prioritization Category
N	9688	Oasis Fuels Inc. DbA Merced Truck & Auto	Le Grand	0.01	Exempt/Low
N	4196	Oasis Market	Crows Landing	0.69	Exempt/Low
S	7569	Oasis Market & Truck Stop	Ducor	0.67	Exempt/Low
N	8707	Oasis Market And Liquor	Turlock	1.89	Intermediate
N	1882	Oasis Mini Mart	Newman	0.72	Exempt/Low
C	1126	Old Town Shell	Clovis	0.51	Exempt/Low
S	9433	Olive Grove Foodmart	Bakersfield	2.39	Intermediate
S	2100	Olive Star Cc Inc.	Bakersfield	0.59	Exempt/Low
N	1849	Olsen Service Station/Nasser M Obaid	Modesto	0.51	Exempt/Low
S	3892	Omega Market	Porterville	0.51	Exempt/Low
S	6617	On The Go Food Store	Bakersfield	1.47	Intermediate
C	1250	On The Go Stores LLC DbA On The Go Fresn	Fresno	0.67	Exempt/Low
N	4176	One Stop Market	Patterson	0.67	Exempt/Low
N	1131	One Stop Market	Manteca	0.91	Exempt/Low
C	810	One Stop Market & Gas	Reedley	1.48	Intermediate
S	1454	One Stop Shell (Kulwant Singh)	Bakersfield	0.51	Exempt/Low
S	3725	Ooba Inc. DbA Samco Union #7	Bakersfield	1.32	Intermediate
S	2815	Orange Belt Grocery (Mohsen M Obad)	Lindsay	0.67	Exempt/Low
N	9230	Orange Market & Gas	Turlock	0.51	Exempt/Low
N	3939	Orlando's	Linden	0.64	Exempt/Low
S	811	Orosi Food Mart (Salah S Salah)	Orosi	0.51	Exempt/Low
S	1068	Orosi Mart & Deli (Salah Saleh Alisaleh)	Orosi	0.60	Exempt/Low
S	2436	Oswell Chevron, Inc.	Bakersfield	0.99	Exempt/Low
S	114	Outpost Food And Gas	Taft	0.51	Exempt/Low
C	2326	P J Express Mart	Madera	0.51	Exempt/Low
N	1202	Pacheco Chevron	Los Banos	1.79	Intermediate
N	8614	Pacific West Petroleum Inc.	Tracy	6.52	Intermediate
S	2555	Paige Ave Mini Mart	Tulare	1.13	Intermediate
C	1791	Pal Brothers, LLC	Madera	1.24	Intermediate
C	9342	Palm Bluff Carwash	Fresno	1.79	Intermediate
C	9440	Palm Plaza	Hanford	8.75	Intermediate
S	2219	Panama & Colony Gas	Bakersfield	0.51	Exempt/Low
S	7610	Panama Lane Shell	Bakersfield	1.09	Intermediate
S	2068	Pandher Mart - LLC	Bakersfield	1.73	Intermediate
C	4185	Panoche Mobil	Firebaugh	0.89	Exempt/Low
C	1892	Panoche Shell	Firebaugh	1.06	Intermediate

2022 Annual Report on the District's Air Toxics Program

Region	Facility ID	Facility Name	City	Prioritization Score	Prioritization Category
N	4608	Paq Inc., Db a Gas-4-Less	Stockton	2.92	Intermediate
N	1749	Paradise Gasoline	Modesto	0.66	Exempt/Low
C	47	Pardeep Singh	Fresno	7.29	Intermediate
C	913	Parkway Mini Mart	Fresno	0.51	Exempt/Low
N	4067	Parkwood Gas & Food	Stockton	0.88	Exempt/Low
S	2954	Parmar Brothers Inc.	Tulare	0.57	Exempt/Low
C	1745	Parmar Petroleum Inc. Db a Gas N Stuff	North Fork	0.51	Exempt/Low
S	2499	Parshant Kumar/Madhu Bala (Pk 1 Stop)	Visalia	0.67	Exempt/Low
N	9546	Patterson Valero	Patterson	0.51	Exempt/Low
N	2098	Paul Oil Company Inc.	Oakdale	1.12	Intermediate
N	2099	Paul Oil Company, Inc.	Riverbank	0.91	Exempt/Low
N	5105	Pd Brothers/ G & B Liquor	Planada	0.51	Exempt/Low
N	8774	Pdi Db a Los Banos Valero	Los Banos	1.10	Intermediate
C	923	Penny Wise	Fresno	0.85	Exempt/Low
N	2105	Penny Wise Gas	Modesto	0.79	Exempt/Low
C	1977	Pennywise	Fresno	1.08	Intermediate
C	3918	Perjian Corporation	Fresno	0.51	Exempt/Low
N	633	Pershing Gas For Less	Stockton	2.53	Intermediate
N	9274	Pershing Holdings Inc.	Escalon	2.79	Intermediate
S	3576	Petro Travel Plaza	Wheeler Ridge	3.72	Intermediate
S	4161	Petro Travel Plaza Holdings LLC	Lebec	3.78	Intermediate
S	7238	Petro Travel Plaza LLC	Lebec	2.89	Intermediate
N	7988	Pg Trading Inc. Db a Grab And Go Plaza	Tracy	2.12	Intermediate
C	1184	Pic 'N' Go #2	Fresno	0.64	Exempt/Low
C	701	Pick Quick Food Store (Bladev S Padda)	Clovis	0.88	Exempt/Low
C	7163	Pilot Travel Centers #1277	Avenal	0.03	Exempt/Low
S	1456	Pilot Travel Centers #1302	Bakersfield	1.75	Intermediate
N	3363	Pilot Travel Centers LLC	Ripon	0.73	Exempt/Low
N	4547	Pilot Travel Centers LLC	Lodi	0.81	Exempt/Low
S	2012	Pilot Travel Centers LLC	Bakersfield	2.84	Intermediate
N	9260	Pilot Travel Centers LLC #1017-01	Lathrop	1.63	Intermediate
S	9102	Pilot Travel Centers LLC #1071-01	Tulare	0.47	Exempt/Low
N	9267	Pilot Travel Centers LLC #1080-01	Patterson	4.68	Intermediate
S	3806	Pilot Travel Centers LLC #154	Lost Hills	3.38	Intermediate

2022 Annual Report on the District's Air Toxics Program

Region	Facility ID	Facility Name	City	Prioritization Score	Prioritization Category
C	2132	Pilot Travel Centers LLC #365	Madera	4.12	Intermediate
S	1439	Pine Mountain Service Center	Pine Mt Club	0.51	Exempt/Low
S	936	Pixley Handy Market Inc.	Pixley	0.52	Exempt/Low
S	2016	Pixley Mini Mart	Pixley	0.51	Exempt/Low
S	2649	Pj Express Mart	Farmersville	0.67	Exempt/Low
S	1041	Plano Handy Market (Hesham Makhlouf)	Porterville	0.67	Exempt/Low
N	1668	Platinum Gas & Market	Modesto	0.51	Exempt/Low
S	4154	Poplar Mini Mart	Porterville	0.51	Exempt/Low
S	574	Portavilla Market (Joseph Abdulla)	Porterville	0.67	Exempt/Low
S	8314	Porterville Arco	Porterville	4.19	Intermediate
S	2090	Porterville City Airport	Porterville	3.67	Intermediate
S	1027	Porterville Liquor	Porterville	0.53	Exempt/Low
S	1728	Pound's Grocery	Bakersfield	0.51	Exempt/Low
S	566	Preet Market	Tulare	0.51	Exempt/Low
S	1007	Prince Food & Gas	Visalia	0.65	Exempt/Low
S	633	Prince Mart (Harinderpal Kaur)	Lemon Cove	0.51	Exempt/Low
S	6859	Prince Palace	Bakersfield	1.06	Intermediate
S	4246	Prince Palace	Bakersfield	1.18	Intermediate
S	8341	Prince Palace Truck Stop Inc.	Bakersfield	1.08	Intermediate
S	604	Princess Superette	Visalia	0.51	Exempt/Low
C	3150	Pritam Singh Gill Dba Extra Mart	Madera	5.83	Intermediate
N	4351	Pritpal Singh - Pennywise Travel	Santa Nella	3.45	Intermediate
C	8518	Propel Fuels Inc.	Fresno	0.51	Exempt/Low
S	3790	Prosperity Food Land (Fawaz Alset)	Tulare	0.51	Exempt/Low
S	7005	Prosperity Mini Mart & Gas	Tulare	8.75	Intermediate
N	2097	Pushpinder Singh Dba Money Market	Oakdale	0.53	Exempt/Low
S	2621	Quality Market & Fuel	Lamont	0.61	Exempt/Low
S	311	Quality Mart	Lindsay	0.51	Exempt/Low
S	2283	Quic Shop Markets	Dinuba	1.14	Intermediate
N	2129	Quick & Save	Patterson	0.51	Exempt/Low
N	1349	Quick And Easy - Rai & Sons Corp.	Gustine	0.51	Exempt/Low
C	992	Quick Fill Inc.	Fresno	0.00	Exempt/Low
C	693	Quick Food Store	Fresno	0.51	Exempt/Low
C	7442	Quick N E-Z	Fresno	1.47	Intermediate
N	4234	Quick N Save	Hughson	0.51	Exempt/Low
N	4446	Quick N Save	Riverbank	0.51	Exempt/Low

2022 Annual Report on the District's Air Toxics Program

Region	Facility ID	Facility Name	City	Prioritization Score	Prioritization Category
N	4610	Quick N Save	Merced	0.67	Exempt/Low
C	1139	Quick Pick & Deli	Fresno	0.51	Exempt/Low
N	141	Quick Serve	Manteca	1.66	Intermediate
N	4249	Quick Shop N Go	Modesto	0.51	Exempt/Low
C	3358	Quick Stop Mini Mart	Caruthers	0.51	Exempt/Low
S	221	Quick Trip Liquor	Tulare	0.58	Exempt/Low
S	1146	Quick-N-Handy Mart & Deli	Dinuba	0.80	Exempt/Low
S	2179	Quick-N-Handy Mart & Deli #2	Visalia	0.65	Exempt/Low
S	2665	Quick-N-Out	Bakersfield	0.51	Exempt/Low
S	603	Quik Jack's Inc.	Visalia	0.91	Exempt/Low
C	1730	Quik Serve Food Store	Coarsegold	5.83	Intermediate
N	2123	Quik Stop #142	Denair	1.50	Intermediate
N	2125	Quik Stop #45	Modesto	0.96	Exempt/Low
N	2114	Quik Stop #71	Modesto	0.99	Exempt/Low
N	2124	Quik Stop #73	Oakdale	0.96	Exempt/Low
N	2115	Quik Stop #79	Turlock	0.94	Exempt/Low
N	2118	Quik Stop #83	Modesto	1.70	Intermediate
N	2117	Quik Stop #87	Modesto	0.91	Exempt/Low
N	669	Quik Stop Market #120	Stockton	1.31	Intermediate
N	660	Quik Stop Market #121	Manteca	0.98	Exempt/Low
N	666	Quik Stop Market #124	Manteca	0.54	Exempt/Low
N	671	Quik Stop Market #138	Tracy	0.83	Exempt/Low
N	668	Quik Stop Market #144	Stockton	1.21	Intermediate
N	2121	Quik Stop Market #155	Turlock	1.01	Intermediate
N	2116	Quik Stop Market #156	Ceres	1.15	Intermediate
N	4362	Quik Stop Market #163	Livingston	3.22	Intermediate
N	663	Quik Stop Market #39	Stockton	0.62	Exempt/Low
N	659	Quik Stop Market #76	Stockton	0.97	Exempt/Low
N	662	Quik Stop Market Inc. #148	Lodi	0.77	Exempt/Low
N	661	Quik Stop Markets #125	Ripon	1.55	Intermediate
N	665	Quik Stop Markets #132	Stockton	1.07	Intermediate
N	670	Quik Stop Markets #152	Lodi	0.85	Exempt/Low
S	961	Qwik Stop	Porterville	0.63	Exempt/Low
C	6895	R & S Liquor	Corcoran	0.51	Exempt/Low
N	4559	R Abbate Enterprises	Gustine	0.61	Exempt/Low
S	1290	R J & Sons Inc.	Delano	0.67	Exempt/Low
N	2913	R K Service Station	Waterford	0.64	Exempt/Low
S	482	R Singh Enterprises Inc.	Exeter	0.62	Exempt/Low
N	1359	R St Chevron	Merced	0.53	Exempt/Low

2022 Annual Report on the District's Air Toxics Program

Region	Facility ID	Facility Name	City	Prioritization Score	Prioritization Category
N	1094	Radc Enterprises Inc. - Grant Line Shell	Tracy	1.39	Intermediate
N	245	Radc Enterprises Inc. Dba Tracy Shell	Tracy	1.19	Intermediate
N	9597	Radc Enterprises, Inc.	Stockton	2.59	Intermediate
N	9596	Radc Enterprises, Inc.	Modesto	2.16	Intermediate
N	1737	Rai & Bath Petroleum Inc.	Modesto	3.19	Intermediate
N	1732	Rai & Sehaj Petroleum Inc.	Modesto	2.31	Intermediate
C	2364	Rai Food Mart Inc. Dba Oaks Mini Mart	Reedley	5.83	Intermediate
N	2127	Rai's Mart (Essam Alsumare)	Riverbank	0.67	Exempt/Low
S	2145	Ramco Express	Bakersfield	0.76	Exempt/Low
N	6060	Ramos Oil Inc.	Thornton	0.51	Exempt/Low
S	972	Ranch Market	Porterville	0.51	Exempt/Low
N	1169	Rancho Market And Gas Inc.	Winton	0.51	Exempt/Low
N	5015	Rancho San Miguel Market	Stockton	0.27	Exempt/Low
C	3076	Ranchos Valero	Madera	0.78	Exempt/Low
N	1053	Randhawa Fuel LLC Dba Dinomart	Manteca	1.09	Intermediate
N	983	Randhawa Petroleum LLC Dba El Dorado Gas	Stockton	0.65	Exempt/Low
C	2261	Rani Food & Liquor Inc.	Fresno	0.51	Exempt/Low
N	431	Rat Oil, Inc. Dba Gas And Shop	Ripon	0.51	Exempt/Low
N	282	Razi Petroleum Inc	Tracy	0.63	Exempt/Low
C	3083	Red Chillies LLC Dba Jackpot	Hanford	0.74	Exempt/Low
C	691	Red Rocket (Lakhbir Singh)	Clovis	0.51	Exempt/Low
C	3737	Red Top Gas	Chowchilla	0.51	Exempt/Low
C	1005	Red Triangle Oil Company	Fresno	0.51	Exempt/Low
S	111	Refaat Naiem Tayan	Bakersfield	0.97	Exempt/Low
N	1159	Refuel Petroleum, Inc.	Manteca	0.51	Exempt/Low
C	3819	Renna Ventures Inc.	Fresno	0.97	Exempt/Low
C	1016	Reno's Mega Mart	Firebaugh	1.38	Intermediate
N	208	Rg Gas Stations Inc. Dba Thornton Valero	Stockton	0.88	Exempt/Low
C	3300	Rhodes Inc.	Orange Cove	0.51	Exempt/Low
C	1021	Rhodes Texaco	Reedley	0.51	Exempt/Low
S	1287	Rio Bravo Market (Dipali Desai)	Bakersfield	0.51	Exempt/Low
N	459	Ripon Shell (Balaji Angle)	Ripon	0.91	Exempt/Low
N	3985	Riverbank Cruisers #34	Riverbank	2.30	Intermediate
C	8615	Riverside Golf Course	Fresno	0.36	Exempt/Low
C	9449	Riverside Valero	Fresno	1.28	Intermediate
S	825	Rj Food & Gas (Preetam Singh)	Dinuba	1.25	Intermediate

2022 Annual Report on the District's Air Toxics Program

Region	Facility ID	Facility Name	City	Prioritization Score	Prioritization Category
S	6587	Rj's Travel Center	Traver	0.97	Exempt/Low
C	275	Robert V Jensen Inc.- Chevron	Hanford	0.93	Exempt/Low
C	1031	Robert V. Jensen, Inc.	Fresno	0.96	Exempt/Low
C	2423	Robert V. Jensen, Inc.	Reedley	0.94	Exempt/Low
N	1358	Robinson Oil Corp DbA Rotten Robbie #59	Santa Nella	2.54	Intermediate
C	1879	Roe Oil Company	Hanford	0.51	Exempt/Low
S	1663	Rosedale Station Inc.	Bakersfield	0.00	Exempt/Low
S	8831	Royal Express Delivery Inc.	Bakersfield	0.51	Exempt/Low
N	8695	Royal Gas And Food	Livingston	0.67	Exempt/Low
S	8898	Roy's Market	Bakersfield	0.51	Exempt/Low
S	803	Rozi's Liquor Store	Delano	0.51	Exempt/Low
S	596	Rozi's Market	Visalia	0.51	Exempt/Low
C	766	Rs Cheaper Co	Fresno	0.87	Exempt/Low
C	8997	Ryan Corner	Fresno	0.51	Exempt/Low
S	1732	S & A Market	Shafter	0.51	Exempt/Low
S	2104	S & H Fuel Stop 3 Inc.	Bakersfield	0.87	Exempt/Low
S	3955	S & H Fuel Stop Inc.	Bakersfield	0.51	Exempt/Low
S	1288	S & J Quick Stop	Shafter	0.53	Exempt/Low
C	2203	S & K Mini Market	Chowchilla	0.52	Exempt/Low
C	3424	S & K Mini Mart	Madera	0.55	Exempt/Low
C	1956	S & K Mini Mart	Sanger	0.68	Exempt/Low
N	2289	S & S Bal LLC	Turlock	0.97	Exempt/Low
S	679	S & S Mini Mart, Inc.	Lamont	0.51	Exempt/Low
N	2522	S&A Petro Inc.	Stockton	0.96	Exempt/Low
C	3111	S.B. Partners Inc. DbA Yosemite Gas	Oakhurst	8.75	Intermediate
N	4563	Safeway Inc.	Turlock	3.31	Intermediate
N	5020	Safeway Inc., Store #2707	Stockton	4.86	Intermediate
N	4490	Safeway, Inc.	Stockton	1.11	Intermediate
N	1260	Sagar's Gas N Save	Merced	0.67	Exempt/Low
S	2065	Saint Peter & Saint Paul LLC	Bakersfield	1.44	Intermediate
C	457	Saleh H. Alkobadi DbA East Reedley Store	Reedley	5.83	Intermediate
N	1769	Salida Cruisers #1	Salida	1.80	Intermediate
S	2014	Sal's E-Z Stop	Bakersfield	0.51	Exempt/Low
S	1348	Sam Khalil	Lebec	1.89	Intermediate
S	1066	Sam Qasem Alinagi Alqabeli	Farmersville	0.67	Exempt/Low
S	2287	Samco Food Store Inc.	Bakersfield	0.52	Exempt/Low
S	6555	Sam's Club # 4819	Bakersfield	9.59	Intermediate

2022 Annual Report on the District's Air Toxics Program

Region	Facility ID	Facility Name	City	Prioritization Score	Prioritization Category
S	3734	Sam's Market	Bakersfield	0.51	Exempt/Low
S	6951	Sam's Market & Gas	Bakersfield	0.53	Exempt/Low
C	1222	Sam's Mini Mart	Coalinga	0.67	Exempt/Low
S	812	San Joaquin Helicopter	Delano	0.13	Exempt/Low
C	573	Sanger Automated Fuel Inc.	Sanger	0.58	Exempt/Low
C	134	Sanger Food Mart	Sanger	0.51	Exempt/Low
N	7987	Sanguinetti Investments, LLC	Farmington	2.34	Intermediate
S	2051	Sat Kaival Management LLC	Bakersfield	3.22	Intermediate
N	7310	Sat Kartar Blessings LLC	Stockton	0.76	Exempt/Low
C	404	Satinder Pal Singh	Sanger	0.51	Exempt/Low
C	7198	Satwant Mini Mart	Madera	1.08	Intermediate
S	819	Save Center Gas & Food (Gurdip S Sandhu)	Porterville	0.51	Exempt/Low
C	1137	Save-N-Go	Selma	0.73	Exempt/Low
N	2477	Sb Gas & Market	Tracy	0.51	Exempt/Low
N	3658	Sbd Oil Inc.	Westley	2.68	Intermediate
N	262	Sbr Petro Inc./Countryside Liquor & Gas	Lodi	0.51	Exempt/Low
N	3612	Sbsj Petro Inc. Dba Flag City Shell	Lodi	1.26	Intermediate
S	1083	Schwebel Petroleum	Bakersfield	0.51	Exempt/Low
S	1084	Schwebel Petroleum	Bakersfield	3.11	Intermediate
S	8562	Schwebel Petroleum Co Inc.		0.00	Exempt/Low
S	8198	Schwebel Petroleum Co Inc.	Fellows	0.00	Exempt/Low
S	8197	Schwebel Petroleum Co Inc.	Maricopa	0.61	Exempt/Low
C	3325	Second Generation LLC	Fresno	0.63	Exempt/Low
S	3909	Second Generation LLC	Farmersville	0.75	Exempt/Low
C	2832	Selma Chevron	Selma	0.68	Exempt/Low
C	455	Selma Exxon	Selma	1.18	Intermediate
C	763	Selma Quick Stop	Selma	0.51	Exempt/Low
C	8244	Selma Retail Prop Inc.-Dba Get N Go Selma	Selma	0.73	Exempt/Low
C	337	Sequoia Marketplace LLC	Squaw Valley	0.90	Exempt/Low
C	2196	Sequoia Marketplace LLC	Squaw Valley	1.18	Intermediate
N	8725	Seven-Eleven Delhi #Bp32	Delhi	2.84	Intermediate
S	2626	Seville Food Mart	Visalia	0.51	Exempt/Low
C	7819	Shah Chevron	Hanford	5.83	Intermediate
C	3365	Shah's Shell	Hanford	0.94	Exempt/Low
S	3626	Shakib Dashtipour	Bakersfield	1.87	Intermediate
S	8186	Shannon Village Mart	Visalia	2.37	Intermediate
N	8748	Shannon's Mini Mart	Merced	0.67	Exempt/Low

2022 Annual Report on the District's Air Toxics Program

Region	Facility ID	Facility Name	City	Prioritization Score	Prioritization Category
C	2043	Shaver Lake Gas & Deli	Shaver Lake	0.51	Exempt/Low
C	3308	Shaver Lake Sports Inc.	Shaver Lake	0.46	Exempt/Low
S	4292	Shell	Visalia	0.51	Exempt/Low
S	3615	Shell "Barn" Mini Mart	Exeter	0.72	Exempt/Low
N	8736	Shell Station	Gustine	0.51	Exempt/Low
S	810	Shepherd's Market	Visalia	0.51	Exempt/Low
S	1031	Sherwood Handy Market	Porterville	0.63	Exempt/Low
S	2187	Shiralian Ent Inc.- Db a E-Z Trip-B/W	Buttonwillow	1.63	Intermediate
S	326	Shiralian Valero	Tulare	1.75	Intermediate
C	1800	Shirdhi Inc.	Chowchilla	1.32	Intermediate
N	1030	Shirdhi Inc.	Merced	1.55	Intermediate
C	8553	Shirdhi Inc. Db a Express Mart Valero	Lemoore	1.38	Intermediate
C	1228	Shirmiss Inc Db a Peach Shell	Clovis	1.39	Intermediate
C	1142	Shogy Market LLC	Firebaugh	0.51	Exempt/Low
S	2470	Shop & Go Market	Visalia	0.67	Exempt/Low
S	320	Shop & Save	Porterville	0.51	Exempt/Low
C	1145	Shop And Gas	Fresno	0.51	Exempt/Low
N	4044	Shop And Go	Merced	0.67	Exempt/Low
C	8516	Shop Kwik Market	Reedley	0.67	Exempt/Low
C	8751	Shop N Go #614	Clovis	1.98	Intermediate
C	88	Shop N Go #618	Lemoore	0.89	Exempt/Low
S	4036	Shop 'N Go Inc.	Tulare	0.98	Exempt/Low
C	136	Shop N Quick #2	Easton	0.79	Exempt/Low
C	2683	Shop N'go Inc.	Coalinga	0.89	Exempt/Low
C	1138	Shop-N-Go	Fresno	1.23	Intermediate
C	1140	Shop-N-Go	Fowler	1.92	Intermediate
C	4026	Shop-N-Go	Clovis	2.34	Intermediate
N	292	Short Stop Food Mart	Lodi	0.63	Exempt/Low
S	973	Shukri A Alrezaki	Lindsay	0.51	Exempt/Low
S	6930	Sidhu Estates Inc.	Dinuba	1.62	Intermediate
C	1152	Sierra Liquor & Deli	Hanford	0.51	Exempt/Low
S	2177	Sierra Minit Mart - Plano	Porterville	1.05	Intermediate
S	319	Sierra Minit Mart #1	Porterville	0.96	Exempt/Low
S	2546	Sierra Minit Mart #2	Porterville	1.55	Intermediate
S	2547	Sierra Minit Mart #4	Terra Bella	0.92	Exempt/Low
S	2086	Sierra Minit Mart #5	Tulare	1.20	Intermediate
S	2087	Sierra Minit Mart #7	Tulare	1.28	Intermediate
N	1724	Simlov Enterprise LLC	Turlock	2.08	Intermediate

2022 Annual Report on the District's Air Toxics Program

Region	Facility ID	Facility Name	City	Prioritization Score	Prioritization Category
S	3335	Simonyan Enterprises Ii Inc.	Lindsay	2.48	Intermediate
N	1381	Simple Simon Mini-Mart	Dos Palos	0.51	Exempt/Low
C	1746	Six Star Chevron (Tanver Ahmad)	Madera	1.31	Intermediate
N	674	Sjrj Investment Inc.	Manteca	0.51	Exempt/Low
N	2891	Sksp Inc. DbA Modesto Chevron	Modesto	5.83	Intermediate
C	9581	Skypark Arco	Fresno	2.11	Intermediate
C	1240	Smart Place Inc.	Fresno	0.51	Exempt/Low
N	2178	Smart Stop Food Mart	Modesto	0.51	Exempt/Low
N	1383	Smiley's Shell	Merced	0.51	Exempt/Low
N	1376	Smiley's Shell	Merced	0.74	Exempt/Low
N	353	Smk Chevron (Harvinder Pal Singh)	Acampo	1.58	Intermediate
C	8736	Snack Market & Tobacco	Fresno	1.01	Intermediate
C	3772	Snappy Food	Fresno	0.65	Exempt/Low
S	3716	Snappy Food Store	Bakersfield	0.66	Exempt/Low
N	9386	Sng Hotels Inc.	Manteca	8.75	Intermediate
C	3477	Snl Corp	Fresno	0.51	Exempt/Low
N	345	Sohal #3	Stockton	2.83	Intermediate
N	2034	Spa Food Liquor & Gas	Modesto	0.51	Exempt/Low
N	1258	Spa Petroleum Inc.	Merced	4.38	Intermediate
S	2061	Sparkling Image Corp	Bakersfield	1.49	Intermediate
C	159	Spl Lidder Enterprise Inc.	Hanford	0.51	Exempt/Low
N	2182	Sport Stop	Waterford	1.11	Intermediate
C	9088	Square Deal Market	Corcoran	0.74	Exempt/Low
N	258	Srh Food & Gas Market	Stockton	0.90	Exempt/Low
C	797	Srp Real Estate Inc. (DbA Belmont Fuel St	Fresno	0.61	Exempt/Low
S	3285	Ssg Bakersfield Group Inc.	Bakersfield	2.13	Intermediate
S	905	Sssb Corp, Inc. DbA Verdugo Market 2	Bakersfield	0.51	Exempt/Low
S	1453	Sssb1 Corp Inc. DbA 76 Food Mart	Bakersfield	0.64	Exempt/Low
S	2631	Sssb2 Corp (Wasco Market)	Wasco	0.67	Exempt/Low
C	1591	Star #1	Selma	1.22	Intermediate
C	1195	Star 1 Mart	Parlier	1.23	Intermediate
C	3692	Star 7 Market	Kerman	0.51	Exempt/Low
N	1779	Star Convenience Inc.	Modesto	0.51	Exempt/Low
N	7167	Star Convenience Inc. DbA Quik Shop & Gas	Modesto	0.51	Exempt/Low
N	2071	Star Gas	Oakdale	0.51	Exempt/Low
N	981	Statewide Petroleum Inc.	Manteca	0.51	Exempt/Low

2022 Annual Report on the District's Air Toxics Program

Region	Facility ID	Facility Name	City	Prioritization Score	Prioritization Category
C	700	Sterling Hartel Developments 1, Inc.	Fresno	0.57	Exempt/Low
C	3306	Sterling Hartel Developments 1, Inc.	Fresno	1.04	Intermediate
S	3420	Stine Road Chevron	Bakersfield	0.71	Exempt/Low
S	2072	Stockdale Mobil	Bakersfield	1.05	Intermediate
S	4129	Stockdale Mobil #2	Bakersfield	7.29	Intermediate
S	4127	Stony Creek Village	Stony Creek	0.51	Exempt/Low
C	5721	Stop And Shop #2	Fresno	0.51	Exempt/Low
C	1148	Stop N Go	Fresno	0.51	Exempt/Low
C	8350	Stop N Go Chevron	Madera	1.00	Exempt/Low
N	2209	Stop N Save Liquors #1	Modesto	0.51	Exempt/Low
N	2203	Stop N Save Liquors #10	Modesto	0.51	Exempt/Low
N	2201	Stop N Save Liquors #2	Modesto	0.51	Exempt/Low
N	2208	Stop N Save Liquors #4	Turlock	0.51	Exempt/Low
N	2206	Stop N Save Liquors #5	Riverbank	0.51	Exempt/Low
N	2202	Stop N Save Liquors #6	Modesto	0.51	Exempt/Low
N	2207	Stop N Save Liquors #7	Modesto	0.51	Exempt/Low
N	2204	Stop N Save Liquors #8	Modesto	0.51	Exempt/Low
C	994	Stop Zone Inc.	Hanford	0.51	Exempt/Low
S	1044	Strathmore Handy Market	Strathmore	0.51	Exempt/Low
S	1069	Strathmore Liquor	Strathmore	0.51	Exempt/Low
S	1722	Stuart's Petroleum	Bakersfield	1.03	Intermediate
S	2431	Stuart's Petroleum	Bakersfield	1.13	Intermediate
S	2078	Sub Station (Sukhdev Singh)	Woodlake	1.04	Intermediate
S	2638	Success Market	Porterville	0.15	Exempt/Low
S	1049	Suhovy's Market	Strathmore	0.51	Exempt/Low
S	806	Sukhsanam Market	Bakersfield	0.51	Exempt/Low
S	246	Sullivan Petroleum Corp LLC	Bakersfield	1.44	Intermediate
S	9173	Sullivan Petroleum LLC	Bakersfield	8.75	Intermediate
S	6678	Sullivan's Petroleum LLC	Bakersfield	1.66	Intermediate
S	1218	Sultana Food Mart	Sultana	0.51	Exempt/Low
N	2257	Sungold Ventures LLC Db Sungold Petrole	Modesto	8.75	Intermediate
S	2706	Sunlines Handy Market	Porterville	0.51	Exempt/Low
C	1740	Sunny Market & Liquor	Madera	0.51	Exempt/Low
N	3280	Sunny's Food Mart	Modesto	0.51	Exempt/Low
S	2096	Sunnyside Handy Market	Porterville	0.51	Exempt/Low
C	9423	Sunnyside Market	Fresno	1.31	Intermediate
C	1129	Sunnyside Sinclair	Fresno	0.55	Exempt/Low

2022 Annual Report on the District's Air Toxics Program

Region	Facility ID	Facility Name	City	Prioritization Score	Prioritization Category
S	154	Sunrise Handy Market (Nezam Kasis)	Porterville	0.61	Exempt/Low
C	875	Sunrise Mini Mart	Reedley	0.51	Exempt/Low
N	1736	Sunrise Retail Enterprises Inc.	Riverbank	3.41	Intermediate
C	2050	Sunshine Food Mart	Fresno	0.53	Exempt/Low
S	1045	Sunshine Handy Market	Porterville	0.51	Exempt/Low
C	1201	Super 1 Food Store	Fresno	0.51	Exempt/Low
S	2031	Super 7 Beer & Food Inc.	Porterville	0.51	Exempt/Low
S	2656	Super 7 Food Store #2 (Paramjit Kaur)	Tulare	0.67	Exempt/Low
C	465	Super Express (Marinder Singh)	Clovis	0.81	Exempt/Low
N	8769	Super Mac Food & Gas #2	Modesto	0.51	Exempt/Low
N	4438	Super Mac Food & Gas (Paramjit Singh)	Hilmar	0.54	Exempt/Low
C	8807	Super Mart Chevron	Caruthers	0.51	Exempt/Low
S	618	Super Stop #2	Kingsburg	0.51	Exempt/Low
N	4142	Super Stop Gas & Liquor	Manteca	0.67	Exempt/Low
S	3578	Super Stop Shopping Center	Tulare	0.51	Exempt/Low
C	733	Super-7	Fresno	0.51	Exempt/Low
N	3414	Super-A Gas & Food	Winton	0.51	Exempt/Low
N	1388	Superway Market	Planada	0.67	Exempt/Low
S	1006	Sw Retail Group Dba Sal's Food Mart	Dinuba	0.63	Exempt/Low
C	8520	Sws Fuel Inc. Dba Johnny Quick 007	Madera	1.52	Intermediate
N	4419	Synergy Petroleum 332 Inc.	Stockton	0.89	Exempt/Low
C	1212	T & A Mobil Mini-Mart	Hanford	0.51	Exempt/Low
C	1209	T & J Arco Mini Mart	Parlier	1.04	Intermediate
S	2069	T S Gas Inc.	Bakersfield	0.00	Exempt/Low
N	3058	Ta Operating LLC	Santa Nella	1.31	Intermediate
S	8614	Ta Operating LLC	Arvin	2.22	Intermediate
C	1792	Tackle Box	Madera	1.09	Intermediate
S	8993	Taft Enterprises Inc.	Bakersfield	0.36	Exempt/Low
S	3648	Taft Hwy Chevron	Bakersfield	1.18	Intermediate
S	2379	Taing Horizon Inc.	Bakersfield	0.62	Exempt/Low
C	1210	Take 10	Corcoran	1.21	Intermediate
N	9330	Tera Investments	Lodi	2.04	Intermediate
S	1029	Terra Bella Handy Market	Terra Bella	0.51	Exempt/Low
S	2189	Terry M & Michael J Bennett	Visalia	0.61	Exempt/Low
S	3706	Tesoro West Coast Co LLC #68225	Tulare	1.71	Intermediate
S	900	Tesoro West Coast Co LLC #68124	Delano	0.51	Exempt/Low

2022 Annual Report on the District's Air Toxics Program

Region	Facility ID	Facility Name	City	Prioritization Score	Prioritization Category
S	3561	Tesoro West Coast Co LLC #68126	Earlimart	1.21	Intermediate
C	3548	Tesoro West Coast Company LLC #68139	Fresno	1.44	Intermediate
N	3384	Tesoro West Coast Company LLC #68166	Modesto	1.13	Intermediate
N	1928	Tesoro West Coast Company LLC #68226	Turlock	0.85	Exempt/Low
N	751	Tesoro West Coast Company LLC #68150	Lockeford	1.60	Intermediate
N	95	Tesoro West Coast Company LLC #68151	Lodi	1.14	Intermediate
N	104	Tesoro West Coast Company LLC #68152	Lodi	0.82	Exempt/Low
N	1039	Tesoro West Coast Company LLC #68153	Lodi	1.57	Intermediate
N	903	Tesoro West Coast Company LLC #68154	Lodi	1.62	Intermediate
N	2265	Tesoro West Coast Company LLC #68163	Modesto	0.90	Exempt/Low
N	1854	Tesoro West Coast Company LLC #68164	Modesto	1.55	Intermediate
N	1859	Tesoro West Coast Company LLC #68165	Modesto	1.45	Intermediate
N	1860	Tesoro West Coast Company LLC #68177	Oakdale	1.42	Intermediate
N	3564	Tesoro West Coast Company LLC #68221	Stockton	1.49	Intermediate
C	1225	Texaco	Huron	0.51	Exempt/Low
S	3224	Tfc88 Inc. Dba Stockdale West Texaco	Bakersfield	2.17	Intermediate
S	8605	The Barn Delano	Delano	1.35	Intermediate
S	9077	The Barn Demaree	Visalia	0.94	Exempt/Low
S	1452	The Barn li	Bakersfield	1.18	Intermediate
S	2095	The Barn lii	Bakersfield	0.78	Exempt/Low
C	1742	The Forks Resort	Bass Lake	1.63	Intermediate
N	1847	The Grewal Family Trust	Turlock	1.06	Intermediate
C	3006	The Last Stop	Sanger	1.04	Intermediate
S	1638	The Spot Food Mart #4	Bakersfield	5.83	Intermediate
S	4168	The Spot Food Mart Inc.	Bakersfield	5.83	Intermediate
S	487	Three Rivers Chevron	Three Rivers	0.51	Exempt/Low
S	2215	Three Rivers Market	Three Rivers	0.51	Exempt/Low
N	856	Tiki Lagun Partners LLC	Stockton	1.80	Intermediate
S	904	Tip Top Liquors	Bakersfield	0.51	Exempt/Low
S	2260	Tipton Chevron	Tipton	0.67	Exempt/Low

2022 Annual Report on the District's Air Toxics Program

Region	Facility ID	Facility Name	City	Prioritization Score	Prioritization Category
C	2241	Tj Food N Liquor (Eric S. Tang)	Fresno	0.73	Exempt/Low
C	735	Tj Grangeville Corporation	Lemoore	1.00	Exempt/Low
S	1572	Tmp Corp DbA Freeway Gas & Liquor	Bakersfield	0.51	Exempt/Low
S	2434	Tmp Corp DbA Niles Chevron	Bakersfield	0.70	Exempt/Low
N	8867	Todd Energy Corporation	Los Banos	4.22	Intermediate
C	2232	Tollhouse Market & Grill	Tollhouse	0.51	Exempt/Low
S	2720	Tomer And Sons Inc.	Bakersfield	0.51	Exempt/Low
C	4217	Tony's 1 Stop Shop	Fresno	0.68	Exempt/Low
C	3689	Tony's One Stop Arco/Manjit Kaur	Fresno	1.22	Intermediate
C	1245	Tower Gas & Mini Mart	Fresno	0.51	Exempt/Low
S	3811	Town & Country Market	Porterville	1.63	Intermediate
N	638	Tr Petro Inc. DbA Plaza Liquor #2	Lodi	0.58	Exempt/Low
N	8746	Tracy 76 - Reliance Gas Investments Inc.	Tracy	0.75	Exempt/Low
N	849	Tracy Market Inc.	Tracy	0.97	Exempt/Low
N	3970	Tracy Truck & Auto Stop	Tracy	1.74	Intermediate
S	1733	Travel Centers Of America	Buttonwillow	2.58	Intermediate
N	1317	Travel Centers Of America	Santa Nella	3.71	Intermediate
S	2629	Traver Market	Traver	1.55	Intermediate
S	143	Traver Valley Farms	Traver	0.55	Exempt/Low
C	1151	Tri-Mart	Hanford	0.67	Exempt/Low
N	1905	Triple R Gas And Mart	Waterford	0.51	Exempt/Low
S	2055	Trmc Retail LLC - Speedway No 1477	Mettler	0.23	Exempt/Low
S	2056	Trmc Retail LLC-Speedway No 1474 (Mobil)	Frazier Park	1.43	Intermediate
S	2057	Trmc Retail LLC-Speedway No 1475 (Mobil)	Bakersfield	1.27	Intermediate
S	1048	Trmc Retail-Speedway No 3051	Visalia	1.68	Intermediate
C	3793	Tulare Arco (Sai Roja Inc.)	Fresno	3.29	Intermediate
S	588	Tulare Mini Mart	Tulare	0.51	Exempt/Low
S	7037	Tulare Petroleum Inc.	Tulare	3.40	Intermediate
C	8333	Tule River Tribal Council DbA Feather Tr	Avenal	0.00	Exempt/Low
N	3062	Turlock Petroleum Inc.	Ceres	3.77	Intermediate
S	2050	Turna & Sons Group Inc.	Bakersfield	1.63	Intermediate
N	887	Turner Cut Resort & Marina Inc.	Stockton	1.31	Intermediate
N	4765	Tvain Group Inc.	Turlock	4.79	Intermediate
N	8212	Tvain Investments Financial Inc.	Turlock	2.13	Intermediate

2022 Annual Report on the District's Air Toxics Program

Region	Facility ID	Facility Name	City	Prioritization Score	Prioritization Category
N	889	Two Guys Food & Fuel	Lathrop	1.12	Intermediate
S	1035	Two Village Market	Visalia	0.51	Exempt/Low
C	8032	U And A Mini Mart li	Sanger	0.82	Exempt/Low
S	852	U S Mini Mart	Earlimart	0.51	Exempt/Low
N	3592	Union Point Resort, Inc.	Stockton	0.00	Exempt/Low
S	8981	Union Village	Bakersfield	0.85	Exempt/Low
C	3241	United Park Inc.	Chowchilla	0.04	Exempt/Low
C	791	Us Gas And Food	Fresno	0.59	Exempt/Low
S	2020	Usa Food And Deli, Inc.	Exeter	0.51	Exempt/Low
C	989	U-Save Liquor Market Inc.	Fresno	0.78	Exempt/Low
S	3533	V G Mini Market	Bakersfield	0.52	Exempt/Low
N	3949	V K Chevron	Modesto	1.30	Intermediate
C	78	Valero Mini Mart (Sukhdev S. Brar)	Firebaugh	0.61	Exempt/Low
C	2166	Vallee Food Store #2	Coarsegold	0.59	Exempt/Low
C	2774	Vallee Foods #17	Fresno	0.93	Exempt/Low
S	571	Valley Convenience Stores Inc.	Exeter	0.51	Exempt/Low
S	2077	Valley Convenience Stores Inc.	Tulare	0.51	Exempt/Low
C	7138	Valley Food Mart	Coalinga	0.51	Exempt/Low
S	9356	Valley Fuel Goshen Inc.	Visalia	1.36	Intermediate
S	1883	Valley Fuel Tipton, Inc.	Tipton	0.74	Exempt/Low
S	813	Valley Fuel Visalia, Inc.	Visalia	0.51	Exempt/Low
C	94	Valley Gas	Fresno	0.51	Exempt/Low
C	1208	Valley Gas	Orange Cove	0.51	Exempt/Low
C	84	Valley Gas And Mini Mart (Ajitpal Singh)	Fresno	0.67	Exempt/Low
C	1813	Valley Gas Food Mart	Coalinga	0.51	Exempt/Low
N	3968	Valley Pacific Petroleum Services Inc.	Lodi	0.51	Exempt/Low
N	4158	Valley Pacific Petroleum Services Inc.	Stockton	0.51	Exempt/Low
N	1973	Valley Pacific Petroleum Services Inc.	Riverbank	0.51	Exempt/Low
N	3560	Valley Pacific Petroleum Services Inc.	Stockton	0.51	Exempt/Low
S	308	Valley Pacific Petroleum Services Inc.	Woodlake	0.51	Exempt/Low
S	2255	Valley Pacific Petroleum Services Inc.	Visalia	0.51	Exempt/Low
N	3138	Valley Pacific Petroleum Services Inc.	Tracy	1.48	Intermediate
C	1165	Valli Gas & Car Wash	Sanger	0.51	Exempt/Low
N	1988	Valtoha Inc. Dba Patterson Chevron	Patterson	0.87	Exempt/Low

2022 Annual Report on the District's Air Toxics Program

Region	Facility ID	Facility Name	City	Prioritization Score	Prioritization Category
N	999	Van De Pol Enterprises, Inc.	Lodi	0.51	Exempt/Low
N	4163	Van De Pol Enterprises, Inc. Dba Gustine	Gustine	0.51	Exempt/Low
C	1710	Van De Pol Enterprises, Inc. Dba Madera P	Madera	1.29	Intermediate
N	1290	Van De Pol Enterprises, Inc. Dba Merced C	Merced	0.60	Exempt/Low
N	1303	Van De Pol Enterprises, Inc. Dba R Street	Merced	0.51	Exempt/Low
C	3188	Van De Pol Enterprises, Inc. Dba:Chowchil	Chowchilla	1.23	Intermediate
N	156	Van De Pol Enterprises, Inc.	Ripon	0.13	Exempt/Low
N	921	Vanco Truck & Auto Plaza	Stockton	1.48	Intermediate
S	1585	Van's Deli Mart	Delano	0.51	Exempt/Low
N	1816	Verpal Investments Inc. Dba Eagle Chevron	Modesto	0.70	Exempt/Low
N	483	Village West Marina	Stockton	0.41	Exempt/Low
N	3627	Vine Fuels Inc.	Salida	1.47	Intermediate
N	2280	Vintage Car Wash Inc.	Modesto	0.51	Exempt/Low
S	2165	Virk Petroleum Corp/Akal Travel Plaza	Delano	0.13	Exempt/Low
C	2109	Virk Properties Inc. Dba Johnny Quik #157	Fresno	1.14	Intermediate
S	2703	Visalia Liquor Inc.	Visalia	0.63	Exempt/Low
C	3826	Vons - A Safeway Company	Oakhurst	3.05	Intermediate
C	3763	Vons - A Safeway Company	Clovis	4.35	Intermediate
C	7971	Vucovich Inc. Dba Fresno Equipment Co	Five Points	4.30	Intermediate
C	2918	Wagner's Mammoth Pool Resorts	Logan Meadow	0.00	Exempt/Low
S	8911	Wainright Oil Corp	Lebec	1.02	Intermediate
C	9777	Walmart Inc.	Kerman	3.06	Intermediate
S	1574	Wardaa 1 LLC Dba Samco Rosedale #13	Bakersfield	0.93	Exempt/Low
S	2013	Wardaa Inc. Dba Samco Norris #9	Bakersfield	0.51	Exempt/Low
S	1841	Wasco Chevron	Wasco	5.83	Intermediate
S	6830	Wasco Mini Mart (Ahmed Ghassan Nagi)	Wasco	0.91	Exempt/Low
N	890	Waterloo Liquors	Stockton	0.55	Exempt/Low
S	2440	Weedpatch Chevron	Bakersfield	0.83	Exempt/Low
C	48	West & Shaw Kwik Serv	Fresno	1.00	Exempt/Low
C	2866	West Hill Oil, Inc.	Coalinga	0.13	Exempt/Low
C	7275	West Hills Oil Inc.	San Joaquin	0.51	Exempt/Low
C	3593	West Hills Oil, Inc.	Kettleman City	0.61	Exempt/Low

2022 Annual Report on the District's Air Toxics Program

Region	Facility ID	Facility Name	City	Prioritization Score	Prioritization Category
N	945	West Lane Fuels	Stockton	0.51	Exempt/Low
S	2269	West Tulare Food Mart	Tulare	1.00	Exempt/Low
N	5049	West Valley Auto Service, LLC	Tracy	9.48	Intermediate
N	936	Western Food And Fuel	Stockton	0.51	Exempt/Low
N	1817	Westley Beacon	Westley	0.73	Exempt/Low
C	3401	Westside Stations, Inc.	Mendota	1.43	Intermediate
S	8338	Wheeler Ridge Shell Station	Bakersfield	0.51	Exempt/Low
S	4247	White Lane Mobil & Circle K	Bakersfield	0.51	Exempt/Low
S	1654	White Lane Shell (Jeffrey Yam)	Bakersfield	1.60	Intermediate
N	1983	Whitmore Stations Inc.	Ceres	1.16	Intermediate
S	2035	Willie's Market (Balwinder Mehat)	Lindsay	0.64	Exempt/Low
N	3135	Windecker Inc.	Los Banos	0.51	Exempt/Low
N	9339	Windecker Property Development LLC	Los Banos	2.04	Intermediate
N	3900	Wine Country Sta/Gill Pandher Invest Inc.	Lodi	0.87	Exempt/Low
N	1232	Winton Petroleum Inc.	Winton	0.51	Exempt/Low
C	287	WKM Associates Inc.	Fresno	1.26	Intermediate
C	469	Woodward Village 76	Fresno	0.77	Exempt/Low
S	745	Xpress Gas 76	Bakersfield	1.11	Intermediate
S	3143	Xpress Mart	Bakersfield	0.00	Exempt/Low
S	1887	Xtra Mart	Exeter	0.51	Exempt/Low
S	3961	Yahalla Inc. Dba Samco #2	Bakersfield	1.00	Exempt/Low
S	2613	Yakoob Mohamed Dba Jack's Gas & Deli	Orosi	0.65	Exempt/Low
S	3672	Yakoob Nagib Saleh Mohamed Dba Jacks Gas	Visalia	1.14	Intermediate
N	4172	Yosemite & Creekwood Inc.	Modesto	1.06	Intermediate
N	73	Yosemite Avenue Arco Am/Pm	Manteca	1.55	Intermediate
C	1797	Zippy Mart #3	Madera	0.67	Exempt/Low

Table A2. Other Types of Facilities Prioritized in 2022

Region	Facility ID	Facility Name	City/County	Prioritization Score	Prioritization Category
N	717	A. Sambado & Son, Inc.	Linden	4.81	Intermediate
N	7488	Aemetis Advanced Fuels Keyes Inc.	Ceres	5.87	Intermediate
C	8901	Agroplantae Inc.	Fresno	0.05	Exempt/Low
N	4399	All Foreign & Domestic Body Shop	Stockton	0.46	Exempt/Low
C	3115	American Avenue Landfill	Kerman	5.03	Intermediate
N	9476	American Bedliners & Truck Accessories	Stockton	2.87	Intermediate
C	6923	Ampersand Chowchilla Biomass LLC	Chowchilla	123.00	High Priority
N	3021	Anh Auto Body & Paint	Stockton	0.30	Exempt/Low
S	8416	Aptco LLC	Delano	0.36	Exempt/Low
S	3012	Aptco LLC	McFarland	1.96	Intermediate
S	2273	Bakersfield City Wastewater #2	Bakersfield	0.50	Exempt/Low
S	3103	Bakersfield City Wastewater #3	Bakersfield	2.16	Intermediate
S	1246	Berry Petroleum Company LLC	Kern County	6.73	Intermediate
S	1328	Berry Petroleum Company LLC	McKittrick	6.73	Intermediate
S	3585	Berry Petroleum Company LLC	Kern County	8.98	Intermediate
S	2265	Berry Petroleum Company LLC	Kern County	6.73	Intermediate
S	8591	Bethlehem Construction	Wasco	0.04	Exempt/Low
S	3984	Bowman Asphalt Inc.	Bakersfield	48.60	High Priority
C	150	Browning Ferris Industries	Fresno	0.13	Exempt/Low
C	146	Browning Ferris Industries	Fresno	0.19	Exempt/Low
S	4214	Calgren Renewable Fuels	Pixley	9.27	Intermediate
C	216	California Air National Guard	Fresno	28.00	High Priority
C	218	California Army National Guard	Fresno	3.43	Intermediate
C	402	California Dairies, Inc.	Fresno	1.43	Intermediate
S	382	California Resources Elk Hills LLC	Kern County	8.83	Intermediate
S	1738	California Resources Production Corp	Kern County	8.83	Intermediate
N	370	California Resources Production Corp	Stockton	1.13	Intermediate
S	8454	California Resources Production Corp	Kern County	8.83	Intermediate
S	8282	California Resources Production Corp	Kern County	8.83	Intermediate
C	652	Calmat DbA Vulcan Materials Company	Sanger	9.43	Intermediate
S	1538	Calmat Of Central California	Bakersfield	0.78	Exempt/Low
C	283	Chemical Waste Management, Inc.	Kettleman City	0.50	Exempt/Low
S	49	Chevron USA Inc.	McKittrick	0.05	Exempt/Low
S	1423	Chevron USA Inc.	Kern County	0.00	Exempt/Low
C	311	Chevron USA Inc.	Fresno County	0.17	Exempt/Low
S	2010	Chevron USA Inc.	Kern County	3.40	Intermediate
S	55	Chevron USA Inc. Lost Hills GP	Lost Hills	0.11	Exempt/Low
C	3074	City Of Clovis - Landfill	Clovis	0.73	Exempt/Low
N	2073	Covanta Stanislaus, Inc.	Crows Landing	3.59	Intermediate

2022 Annual Report on the District's Air Toxics Program

Region	Facility ID	Facility Name	City/County	Prioritization Score	Prioritization Category
S	6971	Crimson Renewable Energy LP	Bakersfield	0.00	Exempt/Low
N	3715	Custom Marble & Onyx	Modesto	0.15	Exempt/Low
S	1385	Delta Trading L P	Bakersfield	0.02	Exempt/Low
N	558	Diamond Pet Foods-Lathrop	Lathrop	7.52	Intermediate
C	3801	E & B Trucking Inc.	Hanford	0.16	Exempt/Low
C	1830	Foster Commodities	Kingsburg	0.21	Exempt/Low
C	535	Fresno/Clovis Regional WWTP	Fresno	0.88	Exempt/Low
N	1660	Gallo Cattle Company	Atwater	31.90	High Priority
N	964	George Reed Inc.	Clements	3.79	Intermediate
S	7858	Grade 6 Oil, LLC - KRH	Bakersfield	5.94	Intermediate
S	724	Grade 6 Oil, LLC - Western Power & Steam	Bakersfield	5.94	Intermediate
N	2898	Graham Packaging Pet Technologies Inc.	Modesto	0.02	Exempt/Low
N	366	Granite Construction	French Camp	2.85	Intermediate
S	1610	Granite Construction Co	Bakersfield	7.78	Intermediate
S	8650	Granite Construction Co	Bakersfield	1.19	Intermediate
C	9867	Granite Construction Company	Kingsburg	0.00	Exempt/Low
N	7888	Granite Construction Company	Tracy	5.21	Intermediate
C	590	Granite Construction, Coalinga	Coalinga	5.46	Intermediate
C	8706	Greens Best Bark And Mulch, Inc.	Reedley	3.48	Intermediate
N	6082	Grower Direct Nut Company	Hughson	2.33	Intermediate
N	2403	Hamamoto's Body Shop	Stockton	0.00	Exempt/Low
N	8237	Hernandez Auto Body And Paint	Stockton	0.32	Exempt/Low
N	408	Holz Rubber Company Inc.	Lodi	50.00	High Priority
N	767	J R Simplot Company	Lathrop	3.63	Intermediate
C	142	J R Simplot Co/Simplot Grower Solutions	Five Points	0.15	Exempt/Low
C	144	J R Simplot Co/Simplot Grower Solutions	Firebaugh	2.68	Intermediate
S	37	Kern Oil & Refining Co.	Bakersfield	21.30	High Priority
S	1768	Kw Plastics Of California	Bakersfield	0.17	Exempt/Low
N	2000	Lakewood Memorial Park	Hughson	2.73	Intermediate
S	1703	Macpherson Oil Co	Bakersfield	0.81	Exempt/Low
N	2943	Main Body Shop	Stockton	0.19	Exempt/Low
N	4607	Merced Power, LLC	El Nido	5.08	Intermediate
C	3608	Nutrien Ag Solutions	Firebaugh	0.03	Exempt/Low
N	593	Owens-Brockway Glass Container	Tracy	0.94	Exempt/Low
S	1336	Pacific Pipeline System LLC	Lebec	0.51	Exempt/Low
S	3636	Pastoria Energy Facility LLC	Lebec	1.51	Intermediate
S	4056	Pena's Disposal	Cutler	1.68	Intermediate
S	8448	Pixley Biogas LLC	Pixley	9.27	Intermediate
S	6534	Pixley Cogen Partners	Pixley	9.27	Intermediate
S	3277	R & R Resources LLC	Kern County	0.28	Exempt/Low
N	8844	Rivermaid Trading, Co.	Lodi	4.22	Intermediate
S	1688	Ruben's Auto Body LLC	Lamont	0.56	Exempt/Low
N	3317	San Francisco Autobody Frame	Stockton	0.05	Exempt/Low
N	1643	Select Harvest USA	Turlock	0.08	Intermediate

2022 Annual Report on the District's Air Toxics Program

Region	Facility ID	Facility Name	City/County	Prioritization Score	Prioritization Category
S	1372	Sentinel Peak Resources Ca LLC	Kern County	4.09	Intermediate
N	2382	Steven Stein Enterprises, Inc.	Stockton	0.01	Exempt/Low
N	2199	Stewart & Jasper	Newman	5.44	Intermediate
S	8310	Sturgeon Service International	Various Locations	0.00	Exempt/Low
S	360	Synagro WWT, Inc.	Lost Hills	0.05	Exempt/Low
C	1244	Toro Petroleum Corp	Firebaugh	0.43	Exempt/Low
S	2783	Tuboscope/Rodco A Nov LP Co Bakersfield	Bakersfield	3.84	Intermediate
S	548	Tulare City Wastewater Plant	Tulare	1.04	Intermediate
N	7617	USA Waste Of California, Inc.	Lathrop	18.60	High Priority
N	1291	Van De Pol Enterprises, DbA Merced Bulk	Merced	1.68	Intermediate
C	1714	Van De Pol Enterprises, Inc. DbA: Madera	Madera	2.43	Intermediate
S	1896	Ventura Coastal LLC	Visalia	0.49	Exempt/Low
S	2426	Visalia City Airport Aviation	Visalia	1.64	Intermediate
S	189	Voltage Multipliers Inc.	Visalia	0.59	Exempt/Low

Table A3. Facilities with Health Risk Assessments Performed in 2022

Region	Facility ID	Facility Name	City	Cancer Score	Acute Score	Chronic Score	Risk Category
N	5136	4283929 Delaware LLC; Dba West Coast Pet	Lodi	0.28	0.24	0.14	Intermediate Risk
S	890	Caballero Operations LLC	Bakersfield	9.40	0.83	0.05	Intermediate Risk
C	9450	Costco Gasoline Loc #1360	Clovis	0.00	0.50	0.20	Intermediate Risk
N	4669	Costco Gasoline LOC #658	Tracy	0.80	0.30	0.00	Intermediate Risk
N	7776	Costco Wholesale	Manteca	2.10	0.30	0.00	Intermediate Risk
S	7067	Costco Wholesale	Visalia	3.00	0.40	0.10	Intermediate Risk
S	6654	Costco Wholesale	Bakersfield	7.20	0.30	0.10	Intermediate Risk
N	4744	Costco Wholesale Loc #38	Stockton	6.70	0.50	0.20	Intermediate Risk
S	3930	Costco Wholesale Corp Loc #688	Bakersfield	3.50	0.30	0.10	Intermediate Risk
N	4153	Costco Wholesale Loc #142	Merced	2.20	0.20	0.10	Intermediate Risk
N	5127	Costco Wholesale Loc #782	Turlock	3.50	0.90	0.10	Intermediate Risk
S	3523	Elk Hills Power LLC	Tupman	0.04	0.00	0.00	Exempt/Low Risk
C	1406	Foster Farms, Belgravia Plant	Fresno	7.44	0.31	0.06	Intermediate Risk
N	8533	Highway 59 Composting Facility	Merced	3.19	0.07	0.00	Intermediate Risk
N	3696	Highway 59 Landfill Site	Merced	0.34	0.02	0.00	Exempt/Low Risk
C	2106	Nas Lemoore	Lemoore	8.09	0.45	0.01	Intermediate Risk
C	1820	Rio Bravo Fresno	Fresno	1.18	0.00	0.00	Intermediate Risk
S	4254	Salser & Dillard Funeral Chapel	Visalia	2.87	0.12	0.12	Intermediate Risk
C	7405	Triangle Rock Products, LLC	Madera	1.79	0.16	0.06	Intermediate Risk
S	3729	Visalia Landfill	Visalia	0.08	0.01	0.00	Exempt/Low Risk
C	8476	Vulcan Materials Co	Fresno	5.36	0.12	0.03	Intermediate Risk

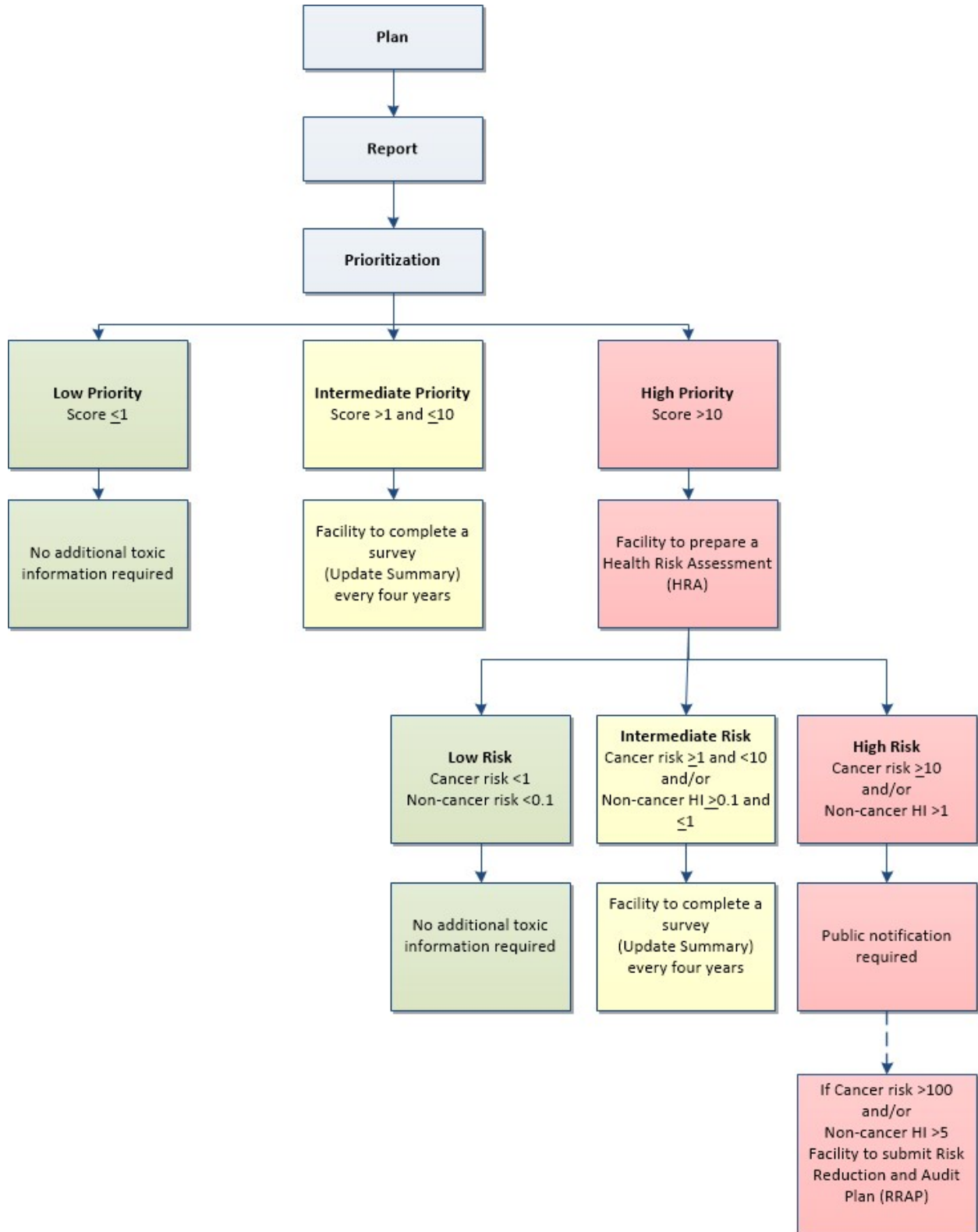
Appendix B. Toxics Emissions Summary

Emissions for eight counties of San Joaquin Valley from the latest California Air Resources Board California Toxics Inventory (CTI).

Table B1. Toxic Emissions Summary

Pollutant	CTI (tons/yr)
Acetaldehyde	3,512
Diesel Particulate Matter	2,520
Formaldehyde	2,318
Benzene	1,020
Perchloroethylene	448
1,3-Butadiene	269
Methylene Chloride	247
PAHs	238
Manganese	217
Acrolein	153
p-Dichlorobenzene	130
Styrene	96
Trichloroethylene	46
Chromium	34
Lead	28
Nickel	18
Acrylonitrile	7
Vinyl Chloride	7
Arsenic	5
Cadmium	3
Mercury	2
Chloroform	2
Ethylene Oxide	0
Ethylene Dichloride	0
Beryllium	0
Carbon Tetrachloride	0
Dioxins/Benzofurans	0
Chromium, Hexavalent	0

Appendix C. AB 2588 District Implementation Flow Chart



Appendix D. Current Status of NESHAP Delegation

National Emission Standards for Hazardous Air Pollutants (NESHAP) for which authority has been delegated to the District are included in District Rule 4002. This rule incorporates the NESHAPs from Part 61, Chapter I, Subchapter C, Title 40, Code of Federal Regulations (Table D.1), and the NESHAPs for Source Categories from Part 63, Chapter I, Subchapter C, Title 40, Code of Federal Regulations (Table D.2).

Table D1. District Delegated NESHAPs from Part 61, Chapter I, Subchapter C, Title 40, Code of Federal Regulations.

Subpart	Description
A	General Provisions
C	National Emission Standard for Beryllium
D	National Emission Standard for Beryllium Rocket Motor Firing
E	National Emission Standard for Mercury
F	National Emission Standard for Vinyl Chloride
J	National Emission Standard for Equipment Leaks (Fugitive Emission Sources) of Benzene
L	National Emission Standard for Benzene Emissions from Coke By-Product Recovery Plants
M	National Emission Standard for Asbestos
N	National Emission Standard for Inorganic Arsenic Emissions from Glass Manufacturing Plants
O	National Emission Standard for Inorganic Arsenic Emissions from Primary Copper Smelters
P	National Emission Standard for Inorganic Arsenic Emissions from Arsenic Trioxide and Metallic Arsenic Production Facilities
V	National Emission Standard for Equipment Leaks (Fugitive Emission Sources)
Y	National Emission Standard for Benzene Emissions from Benzene Storage Vessels
BB	National Emission Standard for Benzene Emissions from Benzene Transfer Operations
FF	National Emission Standard for Benzene Waste Operations

Table D2. District Delegated NESHAPs from Part 63, Chapter I, Subchapter C, Title 40, Code of Federal Regulations.

Subpart	Description
A	General Provisions
F-I	National Emission Standards for Organic Hazardous Air Pollutants From the Synthetic Organic Chemical Manufacturing Industry
J	National Emission Standards for Hazardous Air Pollutants from Polyvinyl Chloride and Copolymers Production
L	National Emission Standards for Coke Oven Batteries
R	National Emission Standards for Gasoline Distribution Facilities (Bulk Gasoline Terminals and Pipeline Breakout Stations)
S	National Emission Standards for Hazardous Air Pollutants from the Pulp and Paper Industry
T	National Emission Standards for Halogenated Solvent Cleaning (except §63.462 - Batch cold cleaning machine standards)
U	National Emission Standards for Hazardous Air Pollutant Emissions: Group I Polymers and Resins
W	National Emission Standards for Hazardous Air Pollutants for Epoxy Resins Production and Non-Nylon Polyamides Production
X	National Emission Standards for Hazardous Air Pollutants from Secondary Lead Smelting
Y	National Emission Standards for Marine Tank Vessel Loading Operations AA National Emission Standards for Hazardous Air Pollutants From Phosphoric Acid Manufacturing Plants
BB	National Emission Standards for Hazardous Air Pollutants from Phosphate Fertilizers Production Plants
CC	National Emission Standards for Hazardous Air Pollutants from Petroleum Refineries
DD	National Emission Standards for Hazardous Air Pollutants from Off-Site Waste and Recovery Operations
EE	National Emission Standards for Magnetic Tape Manufacturing Operations
GG	National Emission Standards for Aerospace Manufacturing and Rework Facilities
HH	National Emission Standards for Hazardous Air Pollutants from Oil and Natural Gas Production Facilities
II	National Emission Standards for Shipbuilding and Ship Repair (Surface Coating)
JJ	National Emission Standards for Wood Furniture Manufacturing Operations
KK	National Emission Standards for the Printing and Publishing Industry
LL	National Emission Standards for Hazardous Air Pollutants for Primary Aluminum Reduction Plants
MM	National Emission Standards for Hazardous Air Pollutants from Chemical Recovery Combustion Sources at Kraft, Soda, Sulfite, and Stand-Alone Semichemical Pulp Mills
YY	National Emission Standards for Hazardous Air Pollutants: Generic Maximum Achievable Control Technology (Generic MACT)
CCC	National Emission Standards for Hazardous Air Pollutants for Steel Pickling--HCl Process Facilities and Hydrochloric Acid Regeneration Plants
DDD	National Emission Standards for Hazardous Air Pollutants for Mineral Wool Production
GGG	National Emission Standards for Hazardous Air Pollutants from Pharmaceutical Production
HHH	National Emission Standards for Hazardous Air Pollutants from Natural Gas Transmission and Storage Facilities
III	National Emission Standards for Hazardous Air Pollutants for Flexible Polyurethane Foam Production
JJJ	National Emission Standards for Hazardous Air Pollutant Emissions: Group IV Polymers and Resins
LLL	National Emission Standards for Hazardous Air Pollutants for Source Categories;

Subpart	Description
	Portland Cement Manufacturing Industry
MMM	National Emission Standards for Hazardous Air Pollutants: Pesticide Active Ingredient Production
NNN	National Emission Standards for Hazardous Air Pollutants for Source Categories; Wool Fiberglass Manufacturing
OOO	National Emission Standards for Hazardous Air Pollutant Emissions: Manufacture of Amino/Phenolic Resins
PPP	National Emission Standards for Hazardous Air Pollutants for Polyether Polyols Production
QQQ	National Emission Standards for Hazardous Air Pollutants from Primary Copper Smelting
RRR	National Emission Standards for Hazardous Air Pollutants for Secondary Aluminum Production
TTT	National Emission Standards for Hazardous Air Pollutants for Primary Lead Smelting
UUU	National Emission Standards for Hazardous Air Pollutants from Petroleum Refineries: Catalytic Cracking Units, Catalytic Reforming Units, and Sulfur Recovery Units
VVV	National Emission Standards for Hazardous Air Pollutants: Publicly Owned Treatment Works
XXX	National Emission Standards for Hazardous Air Pollutants for Ferroalloys Production: Ferromanganese and Silicomanganese
AAAA	National Emission Standards for Hazardous Air Pollutants from Municipal Solid Waste Landfills
CCCC	National Emission Standards for Hazardous Air Pollutants from Manufacturing of Nutritional Yeast
EEEE	National Emission Standards for Hazardous Air Pollutants from Organic Liquids Distribution (Non-Gasoline)
FFFF	National Emission Standards for Hazardous Air Pollutants from Miscellaneous Organic Chemical Manufacturing
GGGG	National Emission Standards for Hazardous Air Pollutants from Solvent Extraction for Vegetable Oil Production
HHHH	National Emission Standards for Hazardous Air Pollutants from Wet- Formed Fiberglass Mat Production
JJJJ	National Emission Standards for Hazardous Air Pollutants from Paper and Other Web Coating
KKKK	National Emission Standards for Hazardous Air Pollutants from Surface Coating of Metal Cans
MMMM	National Emission Standards for Hazardous Air Pollutants from Surface Coating of Miscellaneous Metal Parts and Products
NNNN	National Emission Standards for Hazardous Air Pollutants from Surface Coating of Large Appliances
OOOO	National Emission Standards for Hazardous Air Pollutants from Printing, Coating, and Dyeing of Fabrics and Other Textiles
PPPP	National Emission Standards for Hazardous Air Pollutants from Surface Coating of Plastic Parts and Products
QQQQ	National Emission Standards for Hazardous Air Pollutants from Surface Coating of Wood Building Products
RRRR	National Emission Standards for Hazardous Air Pollutants from Surface Coating of Metal Furniture
SSSS	National Emission Standards for Hazardous Air Pollutants from Surface Coating of Metal Coil
TTTT	National Emission Standards for Hazardous Air Pollutants from Leather Finishing Operations
UUUU	National Emission Standards for Hazardous Air Pollutants from Cellulose Products

Subpart	Description
	Manufacturing
VVVV	National Emission Standards for Hazardous Air Pollutants from Boat Manufacturing
WWWW	National Emission Standards for Hazardous Air Pollutants from Reinforced Plastic Composites Production
XXXX	National Emission Standards for Hazardous Air Pollutants from f Rubber Tire Manufacturing
YYYY	National Emission Standards for Hazardous Air Pollutants from Stationary Combustion Turbines
AAAAA	National Emission Standards for Hazardous Air Pollutants from Lime Manufacturing Plants
BBBBB	National Emission Standards for Hazardous Air Pollutants from Semiconductor Manufacturing
CCCCC	National Emission Standards for Hazardous Air Pollutants from Coke Ovens: Pushing, Quenching, and Battery Stacks
EEEEE	National Emission Standards for Hazardous Air Pollutants from Iron and Steel Foundries
FFFFF	National Emission Standards for Hazardous Air Pollutants from Integrated Iron and Steel Manufacturing
GGGGG	National Emission Standards for Hazardous Air Pollutants from Site Remediation
HHHHH	National Emission Standards for Hazardous Air Pollutants from Miscellaneous Coating Manufacturing
IIIII	National Emission Standards for Hazardous Air Pollutants from Mercury Emissions from Mercury Cell Chlor-Alkali Plants
JJJJJ	National Emission Standards for Hazardous Air Pollutants from Brick and Structural Clay Products Manufacturing
KKKKK	National Emission Standards for Hazardous Air Pollutants from Clay Ceramics Manufacturing
LLLLL	National Emission Standards for Hazardous Air Pollutants from Asphalt Processing and Asphalt Roofing Manufacturing
MMMM M	National Emission Standards for Hazardous Air Pollutants from Flexible Polyurethane Foam Fabrication Operations
PPPPP	National Emission Standards for Hazardous Air Pollutants from Engine Test Cells/Stand
QQQQQ	National Emission Standards for Hazardous Air Pollutants from Friction Materials Manufacturing Facilities
RRRRR	National Emission Standards for Hazardous Air Pollutants from Taconite Iron Ore Processing
SSSSS	National Emission Standards for Hazardous Air Pollutants from Refractory Products Manufacturing
TTTTT	National Emission Standards for Hazardous Air Pollutants from Primary Magnesium Refining