



SAN JOAQUIN VALLEY AIR POLLUTION CONTROL DISTRICT

## REQUEST FOR APPLICATION

### *Clean Green Yard Machines Rebate Program AB 617 Community Lawn Mower Trade-in Events*

The San Joaquin Valley Air Pollution Control District (District) is soliciting applications from lawn and garden equipment manufacturers (applicants) to help implement lawn mower exchange events within the geographic community boundaries of four Valley AB 617 communities in South Central Fresno, Shafter, Stockton and Arvin/Lamont, maps of which are referenced in Attachment 1. This Request for Application (RFA) will provide grant funding to the selected applicant(s) that can demonstrate the ability to efficiently and effectively partner with the District on the implementation of multiple lawn mower exchange events within the District's AB 617 communities. Interested applicants need to be capable of supplying up to 300 new, zero-emission, electric lawnmowers per event. The scale and number of events will depend on the availability of funds and the priorities of each AB 617 community. The Residential Lawn and Garden program, also referred to as the District's Clean Green Yard Machines Residential Rebate Program (CGYM Program), is a Community Identified Project that has been included and prioritized in the California Air Resources Board (CARB) and District adopted Community Emission Reduction Programs (CERP).

---

Submittal: Applications will be accepted until March 29, 2024 (5:00 PM)

Address to: Mail: San Joaquin Valley Air Pollution Control District  
Attn: Kevin Ng, Senior Air Quality Specialist  
1990 East Gettysburg Avenue  
Fresno, CA 93726-0244

Email: [grants@valleyair.org](mailto:grants@valleyair.org)  
Subject: CGYM Trade-in Event RFA

Issuance Date: February 28, 2024

## Table of Contents

1.0	Introduction .....	1
2.0	Community Support .....	2
3.0	General Information.....	3
4.0	Overview of Lawn Mower Trade-in Events.....	4
5.0	Applicant Eligibility .....	6
6.0	Schedule.....	7
7.0	RFA Response Submittal Requirements .....	7
8.0	District Contact.....	9
9.0	Application Evaluation and Scoring Criteria .....	10
10.0	Other Conditions of Award.....	10
11.0	Addenda.....	11
	<b>AB 617 Community Boundary Maps.....</b>	<b>12</b>
	<b>CGYM Program.....</b>	<b>17</b>
	<b>Manufacturer Application.....</b>	<b>21</b>

## 1.0 Introduction

Assembly Bill 617 (AB 617) requires CARB and air districts to develop and implement additional emissions reporting, monitoring, reduction plans and emission reduction measures in an effort to reduce air pollution exposure in disadvantaged communities. South Central Fresno, Shafter, Stockton and Arvin/Lamont are communities of the San Joaquin Valley (Valley) selected by CARB for investment of additional resources under AB 617.

AB 617 provides mechanisms and resources to invest substantial funding in the community through voluntary incentive funding measures. Most importantly, these measures are guided by the shared experience and knowledge of local community members, through their input and involvement on Steering Committees for each AB 617-selected community. Under AB 617, the District's role includes the development and adoption of a community emission reduction plan, or CERP, for each selected community, in consultation with CARB, the residents, affected sources, and local governmental bodies in the affected community. The residential lawn and garden program is a Community Identified Project included and prioritized in the CARB and District adopted CERP.

The goal of this CERP measure is to reduce NOx and PM2.5 emissions from residential lawn and garden equipment by replacing existing gas powered units with battery-powered zero-emission models in under resourced communities impacted by poor air quality and other environmental and social factors. In addition to reducing emissions in the community, hosting in-person lawn mower exchange events within the communities significantly reduces barriers to participate in the program by bringing the dismantler on site to dispose of the existing gas-powered mower and directly providing the new zero-emission mower, without the need to go through the typical rebate process. Furthermore, the introduction of battery-powered lawn mowers into these communities can allow participants to test the new technology, and help demonstrate for others that it can be feasible to adopt such technology in their own homes. These types of opportunities support and assist in furthering the deployment of electric, zero-emission technology.

Under this RFA, the District is seeking applicants who are lawn and garden equipment manufacturers that sell eligible new zero-emission electric lawn mowers within the San Joaquin Valley Air Basin to partner with the District and administer the District's CGYM Program lawn mower trade-in events (events). The purpose of these events are to

provide incentives to residents of the AB 617 communities of South Central Fresno, Shafter, Stockton and Arvin/Lamont to trade-in their old gas lawn mowers for new electric lawn mowers, which support the Residential Lawn and Garden Program CERP measure for each community. Refer to Attachment 1 of this RFA for maps of the eligible AB 617 communities.

## 2.0 Community Support

Community engagement continues to be an important part of the CERP development. District staff have routinely met with the Community Steering Committees (CSCs), and CSC members have expressed strong interest in providing funding to support the Residential Lawn and Garden measure, which was included in the adopted CERP for each CSC. During discussions, CSC members expressed the need for in-person, trade-in events where residents can easily submit their old lawn mower for dismantling and receive a new electric one at the same time with no out-of-pocket cost. Providing a local option for disposal and no financial out-of-pocket commitment were the key elements requested by the committees.

The District's existing CGYM Program is a rebate process where a participant purchases a new all-electric lawn mower, surrenders their old gas- or diesel-powered lawn mower to a dismantling facility for permanent destruction, and then completes and submits a program application to the District for a rebate. The CGYM Program Application and Guidelines are included as Attachment 2 of this RFA. As an enhancement through the AB 617 program, residents in the AB 617 boundary are able to take advantage of increased incentive funding from the District's existing program resulting in participants receiving a new electric lawn mower at no cost. And to address the concerns of CSC members, the implementation of the lawn mower trade-in events will create a streamlined process for residents in the AB 617 communities to readily participate in the CGYM Program without the financial burden of purchasing the new mower first. The events will provide this benefit to residents while maintaining the integrity of the CGYM Program by removing old lawn mowers from residential use when they are surrendered at the events.

This RFA was developed and modeled after existing plans and resources for similar projects within the state of California and includes feedback received from the CSCs to create a program that addresses the unique needs of each community.

### 3.0 General Information

Applicants interested in participating in the District's CGYM lawn mower trade-in events must submit a completed application by the application deadline. The District will select applicants to participate through a competitive selection process. Applicants selected through the competitive selection process will enter into an agreement with the District.

Applicants will partner with the District to hold the trade-in events at an approved venue/retail location and provide staff members to help administer the event. If an authorized local retailer/dealership is selected to host the trade-in event, the manufacturer will work directly with the retailer/dealership and the District to ensure that accurate records of devices sold are maintained and provided to the District along with an invoice for reimbursement following the event.

Applicants are responsible for providing the new electric lawn mowers, of the same make and model identified during the application process, for the trade-in events. Applicants interested in participating must be capable of supplying up to 300 new lawn mowers per event. The scale and number of events will depend on the availability of funds and the priorities of each AB 617 community. If mutually agreed upon by the District and applicant, the District reserves the right to extend the duration of the agreement and organize additional events.

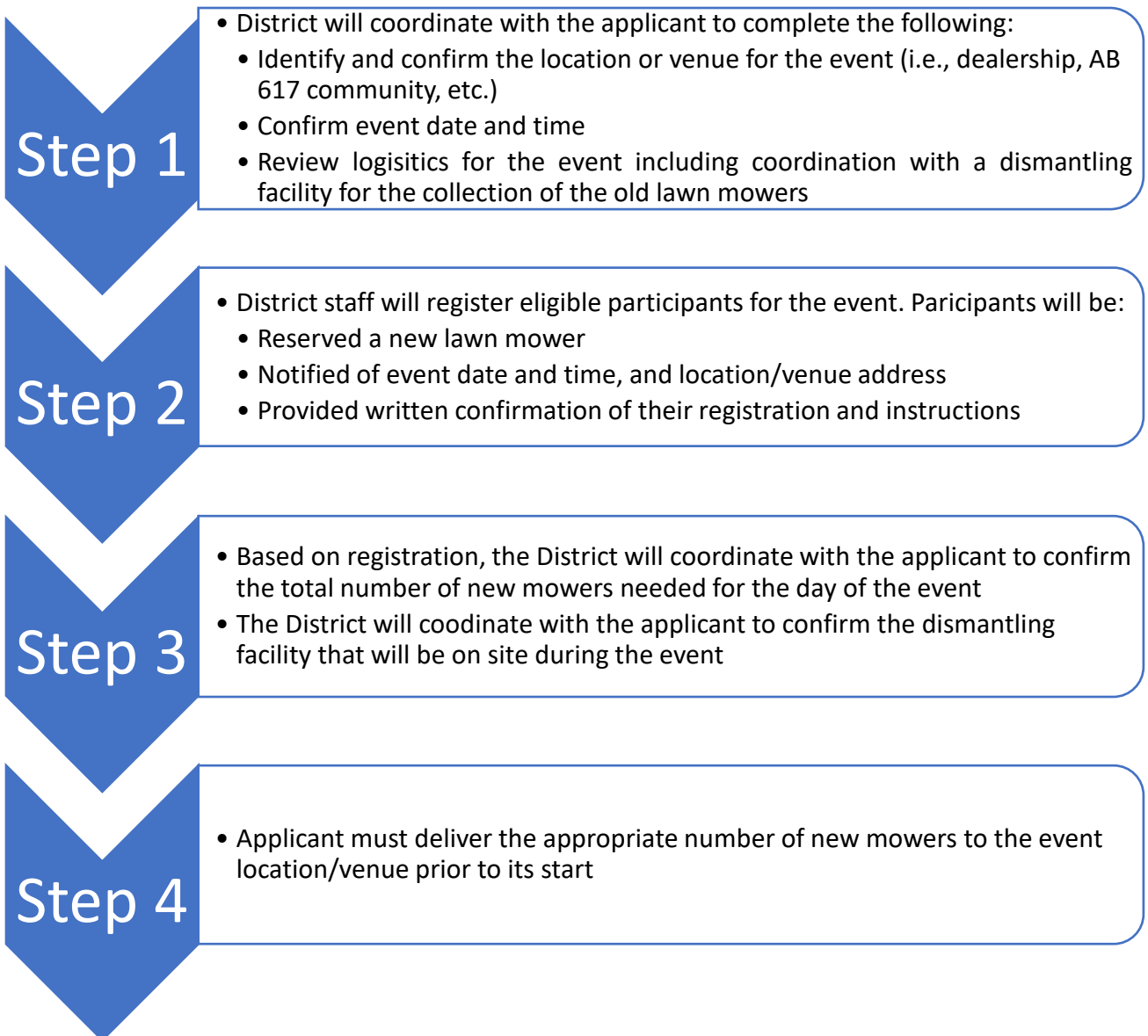
## 4.0 Overview of Lawn Mower Trade-in Events

Lawn mower trade-in events are completed in 3 phases:

### Phase 1: Event Preparation

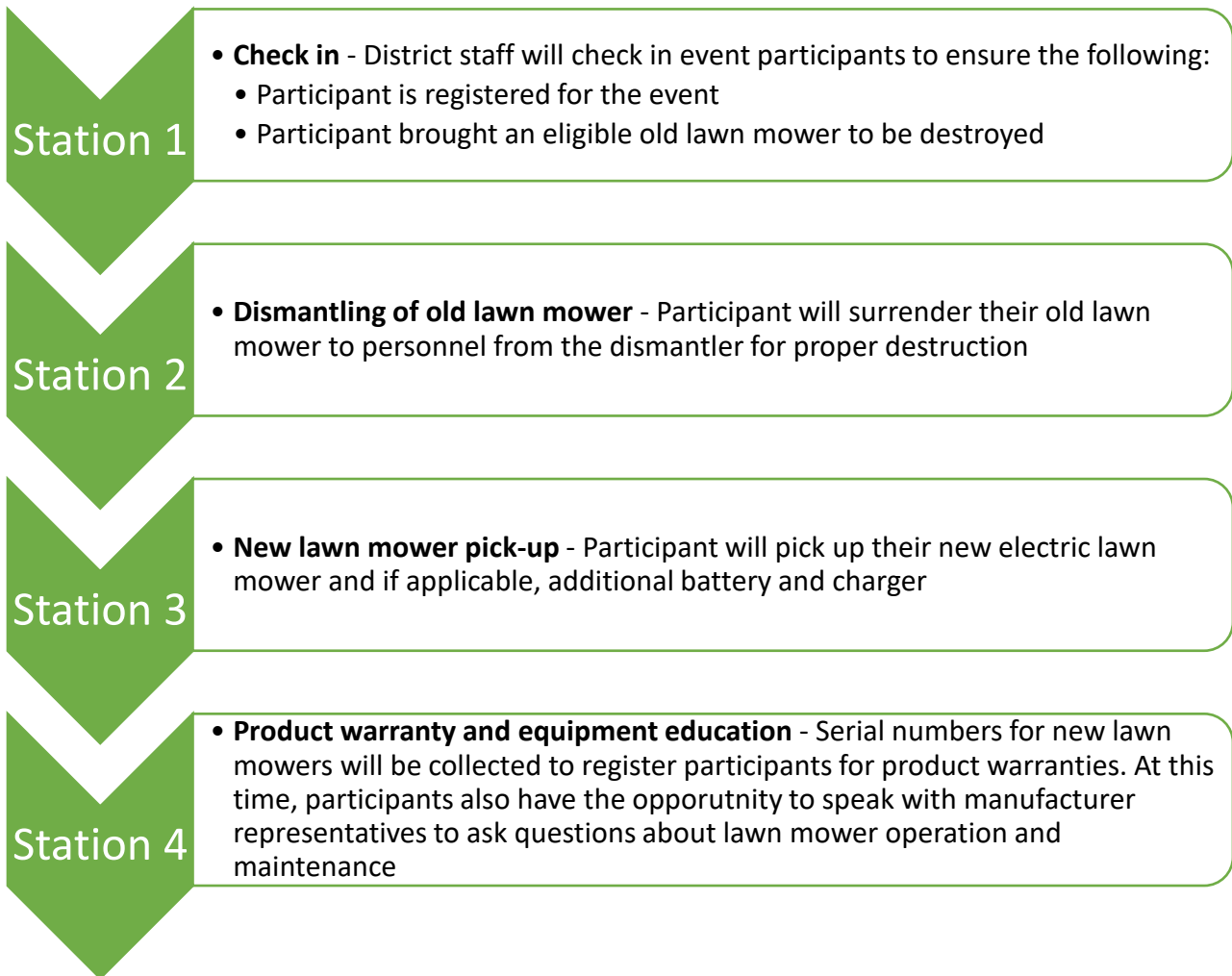
In preparation for the event, the District will utilize the guidelines and application from the existing CGYM Program to determine the eligibility of participants. Participants will also be screened to ensure they reside within the respective AB 617 community.

The following steps will occur prior to the event:



## Phase 2: Event Day

The applicant will work with District staff and the approved venue or retailer/dealership to help administer the events. At the event, participants will move through stations in the following manner:



## Phase 3: Post Event/Reimbursement

After the event, the applicant, or retailer/dealership, if applicable, will submit a claim that includes an invoice for all the electric lawn mowers distributed at the event to the District for reimbursement. As part of the claim, a final invoice or receipt must be provided to the District and show itemized transactions for each lawn mower acquired by eligible participants during the event. Required documentation for a complete claim will be identified in the agreement between the applicant and/or retailer/dealership and

the District. Payment will be issued by the District within the agreed upon timeframe in the signed agreement.

## 5.0 Applicant Eligibility

To be eligible to apply under this RFA, applicant must be a manufacturer of commercially available, zero-emission electric lawn mowers for residential use.

Applicants must meet the following requirements:

- a. Must have an eligible zero-emission electric lawn mower for sale that meet requirements of the CGYM Program Guidelines. Refer to Attachment 2 of this RFA for the CGYM Program Application and Guidelines.
- b. Must be able to provide sufficient quantities of eligible new zero-emission lawn mowers, as identified in Section 3.0, for the trade-in events that will take place within selected AB 617 communities. Refer to Attachment 1 of this RFA for maps of the selected AB 617 communities.
- c. As applicable, will provide documentation showing they have had a valid Employer Identification Number and California business license for a minimum of the previous two (2) years from date of application submittal.
- d. Agree to allow the District and/or the CARB to inspect cordless, zero-emission electric landscaping equipment or audit Program records covered under the agreement that the applicant will enter into with the District during normal business hours.
- e. Agree to provide aftermarket service to customers for defects in materials or workmanship as listed in the product warranty and said written express warranty shall fulfill all applicable requirements of California law pertaining to warranties, including but not limited to sections 1791 through 1795.7 of the California Civil Code (in relation to consumer goods), as amended from time to time. With respect to consumer goods, all applicable implied warranties shall continue to apply and remain in full force and effect where required under California law, including but not limited to the implied warranty of merchantability, implied warranty of fitness and the implied warranty of title. For commercial sales, the provisions of the California Commercial Code shall apply, including but not limited sections 2312 through 2317.
- f. Agree to notify the District as soon as reasonably possible, and individually notify any and all purchasers of equipment through this program of any recall of the zero-emission lawn mower or any of its constituent parts ordered by manufacturer or by a government agency. Applicants shall comply at all times with California recall laws

(including but not limited to the Product Recall Safety and Protection Act, Sections 108040 through 108050 of the California Health and Safety Code) and the requirements of the Consumer Product Safety Commission, including but not limited to Parts 1101 through 1205 of Title 16 of the Code of Federal Regulations and Sections 2064 and 2084 of the Consumer Product Safety Improvement Act (15 U.S.C. §§ 2051-2089).

- g. Agree that the District does not warrant or endorse the applicant’s zero-emission landscaping equipment for any purpose, including materials, workmanship, merchant ability or fitness for use. Nothing in the applicant’s agreement with the District shall be construed as a warranty or endorsement.
- h. Agree to abide by CCR, title 13, section 2408.1(a), Averaging, Banking, and Trading Program Exclusion.

## 6.0 Schedule

Release RFA	February 28, 2024
Final date to submit application	March 29, 2024 (5:00 PM)
Application review and final selection	Approximately 30 days

## 7.0 RFA Response Submittal Requirements

### 7.1 Application Packet

Please submit a complete application packet for consideration. District staff may contact you if your application is incomplete. A complete application packet includes the following items:

1. Completed and signed Manufacturer Application (Attachment 3).
  - a. The application must be signed by an individual who is authorized to enter into an agreement with the District, on behalf of the applicant.
2. Applicant must provide documentation showing they currently have a valid Employer Identification Number and California business license and has had one for a minimum of the previous (2) two years.

3. If the applicant will be distributing and selling eligible lawn mowers at events in lieu of utilizing the facilities of an authorized local retailer/dealership, the applicant will be required to be properly insured to help administer and implement events. The applicant is required to submit a copy of a valid Certificate of Liability Insurance (ACORD Form) which identifies coverage in the amounts as follows:
  - a. General liability insurance with a combined single limit with minimum limits of coverage in the amount of \$2 million per occurrence; and
  - b. Automobile liability insurance which covers bodily injury and property damage with a combined single limit with minimum limits of coverage in the amount of \$1 million per occurrence.
  - c. Workers compensation, as required by California law (Please provide a letter of explanation if you are not required to provide workers compensation)
  - d. San Joaquin Valley Air Pollution Control District identified as the Certificate Holder
  - e. In the Description of Operations/Locations/Vehicles field, please specify the following: "San Joaquin Valley Air Pollution Control District is named as additional insured."
4. Completed first page of IRS Form W-9 <https://www.irs.gov/pub/irs-pdf/fw9.pdf>
5. Product manual or equipment specification sheet for the lawn mower
6. Price quote for the lawn mower, including cost of battery, charger, taxes and any additional fees
7. Copy of product warranty for lawn mower

## **7.2 Instruction to Applicants**

The application packet must be complete and accurate. Omissions, inaccuracies, or misstatements may be sufficient cause for rejection of an application.

**Complete applications can be submitted via the following:**

Mail: San Joaquin Valley Air Pollution Control District  
Attn: Kevin Ng, Senior Air Quality Specialist  
1990 East Gettysburg Avenue  
Fresno, CA 93726-0244

Email: [grants@valleyair.org](mailto:grants@valleyair.org)  
Subject: CGYM Trade-in Event RFA

Before submitting a response to this RFA, applicants are responsible for reviewing the Program application and guidelines in Attachment 2 of the RFA, and confirming compliance with this RFA's requirements. It is the applicant's responsibility to ensure that they respond appropriately and if selected, understand and can comply with the terms and conditions under which they would be responsible.

Upon receipt of applications, all original documents submitted in response to this RFA will become the property of the District, and will be regarded as public records under the California Public Records Act (Government Code Section 6250 et seq.). The following information shall be kept from public review unless mandated by Judicial Order: confidential information, such as social security numbers, medical information, trade secrets, copyrighted materials and other information deemed non-releasable by the Public Records Act.

## 8.0 District Contact

Questions regarding this RFA should be addressed to:

Kevin Ng, Senior Air Quality Specialist  
Phone: (559) 230-5810  
Email: [Kevin.Ng@valleyair.org](mailto:Kevin.Ng@valleyair.org)

Stephanie Hitchman, Senior Air Quality Specialist  
Phone: (559) 230-5845  
Email: [Stephanie.Hitchman@valleyair.org](mailto:Stephanie.Hitchman@valleyair.org)

## 9.0 Application Evaluation and Scoring Criteria

Applications received by the District will be reviewed and scored in accordance to the scoring criteria described in the table below. Each application will be scored and ranked based on the scoring criteria. **Refer to the Scoring Criteria section of Attachment 3 for specific scoring criteria details.** Upon selection approval, a contract will be offered to the selected applicant(s). Full participation in the program will not occur until all parties (District and applicant) have signed the contract.

Applications will be evaluated on the following criteria:

Scoring Criteria	Points
Applicant Capabilities	35
Product Specification and Cost	35
Previous Event Experience	20
Outreach Experience and Capabilities	5
Product Warranty	5

Responses provided by the applicant in their application will be reviewed in accordance to the scoring criteria. Applicants are encouraged to thoroughly review the information requested by the District in the application, Attachment 3, to ensure all categories are fully addressed. During the evaluation period, if an item is unclear or needs further clarification, the District may request the applicant to provide additional documentation and/or information.

## 10.0 Other Conditions of Award

The eligibility of an applicant to participate in the Program is at the sole discretion of the District. The District reserves the right to reject any application deemed ineligible in its opinion under this announcement. The District reserves the right to select one or more applicants under this RFA to complete the required events for AB 617 communities identified in Attachment 1. In addition, the District reserves the right to not select any applicants if applications submitted are deemed incomplete and/or evaluated to be insufficient to ensure the successful and timely implementation of the lawn mower trade-in events identified in this RFA. Such determinations are at the full discretion of the District.

No oral understanding or agreement shall be binding on either party. Participating applicants awarded under this announcement will be offered an agreement with the District.

## 11.0 Addenda

The District may modify the RFA and/or issue supplementary information or guidelines relating to the RFA at any time and at its discretion. If the District modifies the RFA, the modification will be posted on the District's website at <https://ww2.valleyair.org/grants/clean-green-yard-machines-residential/>. Applicants whose applications are received prior to a modification will be notified that a modification has been made and will be allowed to submit a new application or updated information as deemed necessary.

*The Residential Lawn and Garden Program is a part of California Climate Investments (CCI), a statewide initiative that puts billions of Cap-and-Trade dollars to work reducing greenhouse gas (GHG) emissions, strengthening the economy, and improving public health and the environment – particularly in disadvantaged communities.*

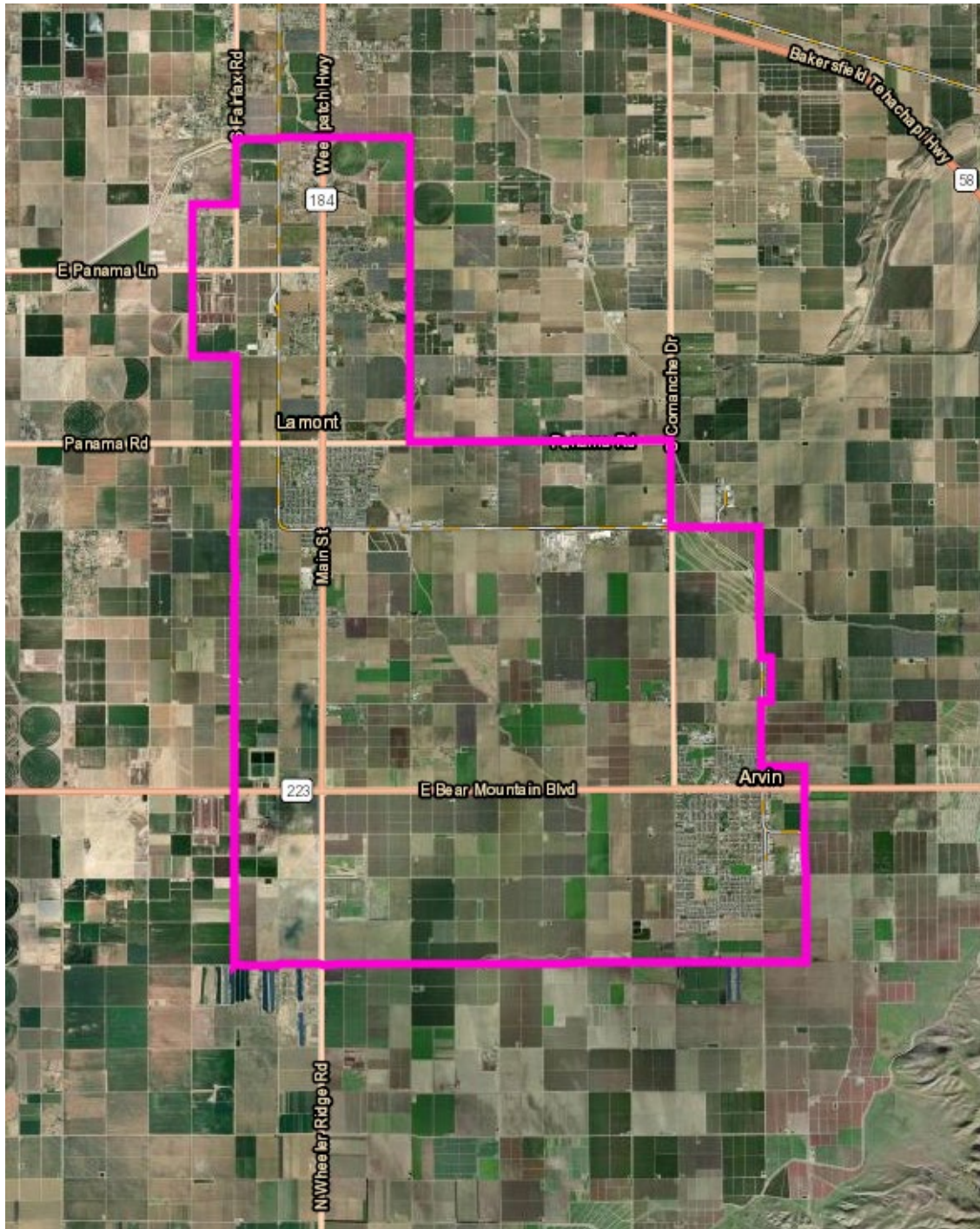
# **Attachment 1**

## **AB 617 Community Boundary Maps**

Approved as of December 1, 2023

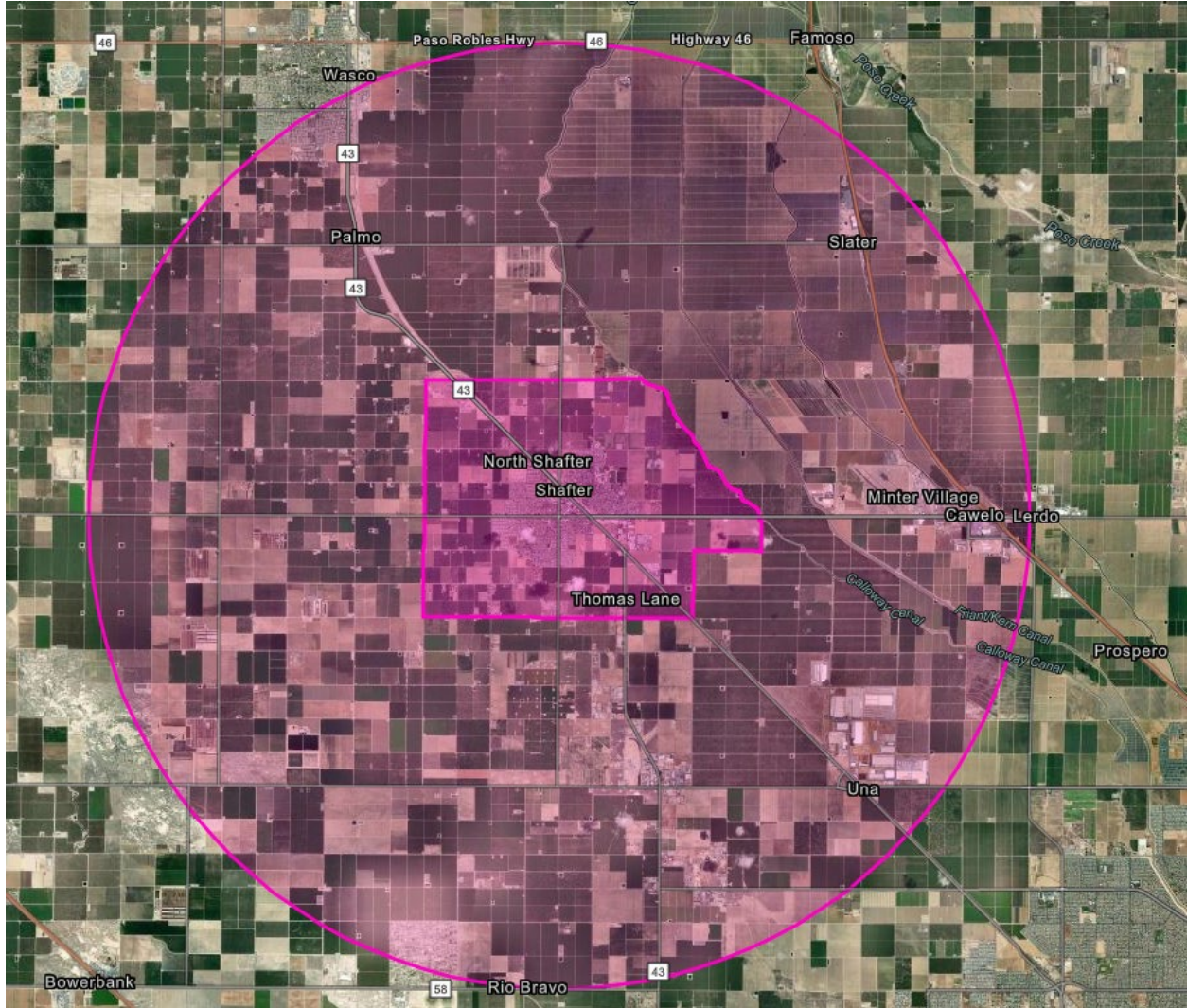
# Arvin and Lamont Community Boundary

<http://community.valleyair.org/selected-communities/arvin-lamont/>



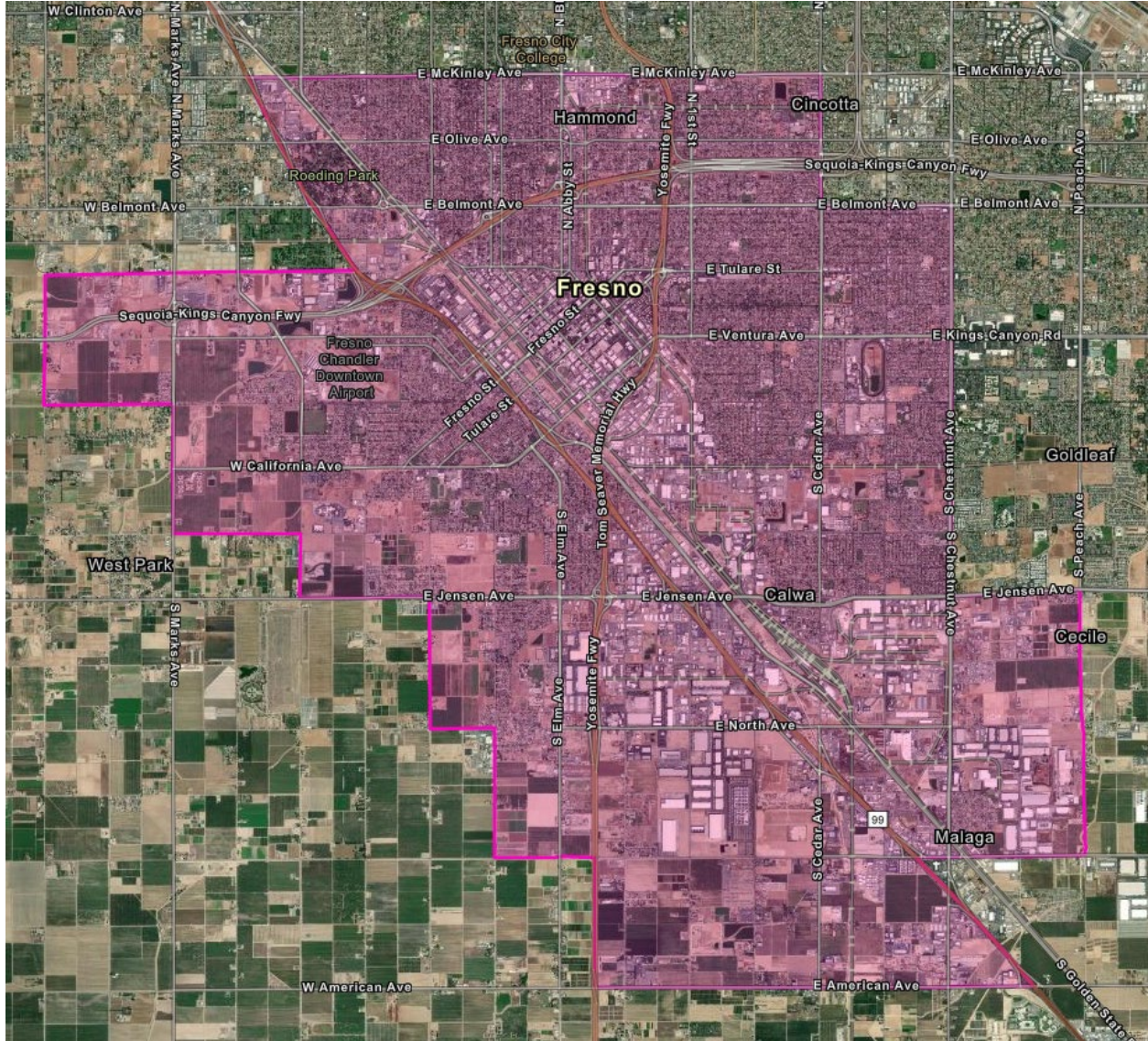
# Shafter Community Boundary

<http://community.valleyair.org/selected-communities/shafter>



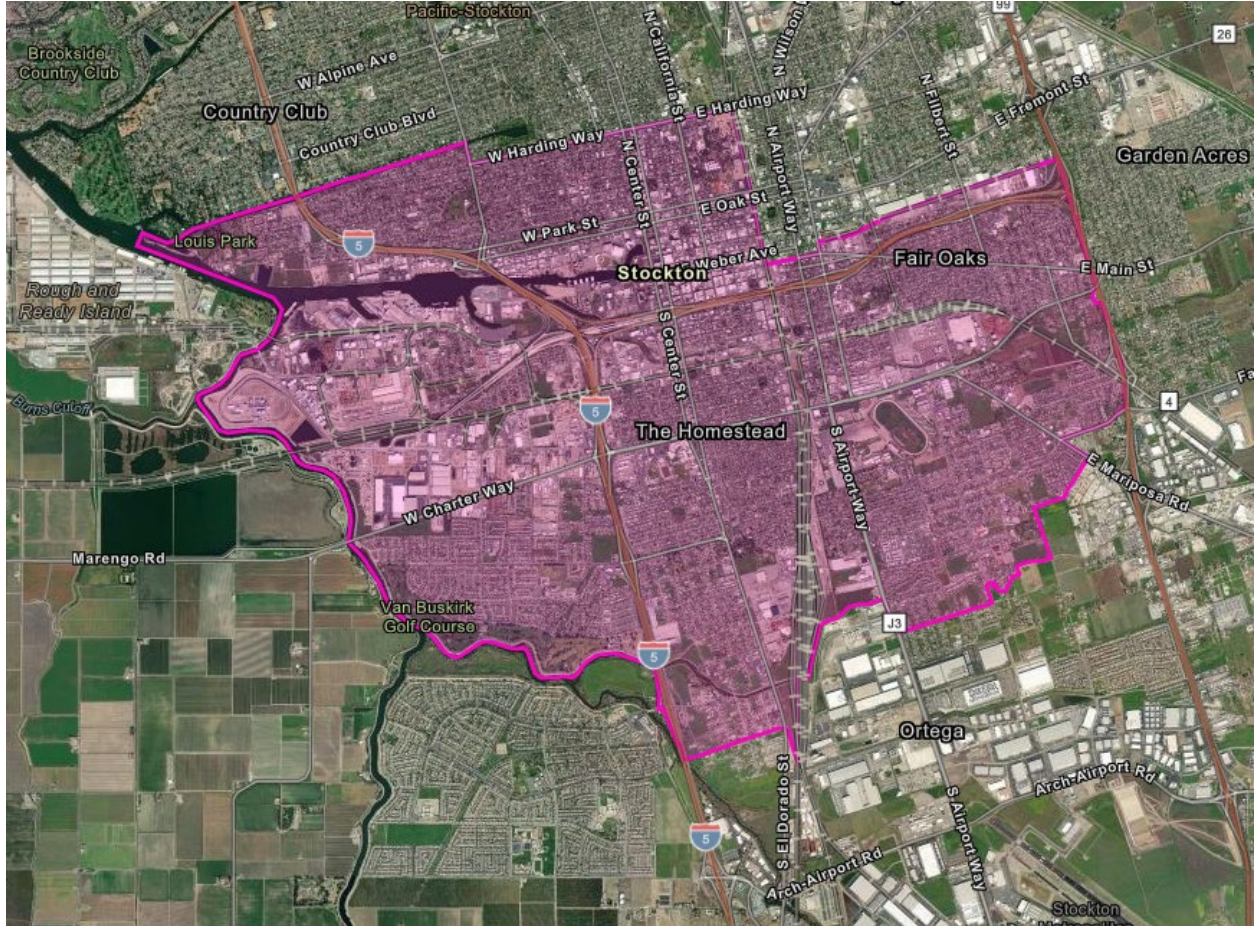
# South Central Fresno Community Boundary

<http://community.valleyair.org/selected-communities/south-central-fresno>



# Stockton Community Boundary

<http://community.valleyair.org/selected-communities/southwest-stockton/>



## **Attachment 2**

### **CGYM Program**

### **Application and Guidelines**

## RESIDENTIAL REBATE PROGRAM APPLICATION

Please fill out this form completely and as accurately as possible. All fields are required unless otherwise indicated. You must submit one (1) form for each piece of equipment you purchased.

APPLICANT INFORMATION	First and Last Name		Project #	
	County of Residence:			
	<input type="checkbox"/> San Joaquin <input type="checkbox"/> Stanislaus <input type="checkbox"/> Merced <input type="checkbox"/> Madera <input type="checkbox"/> Fresno <input type="checkbox"/> Kings <input type="checkbox"/> Tulare <input type="checkbox"/> Kern (Valley portion)			
	AB617 Community (if applicable): <input type="checkbox"/> South Central Fresno <input type="checkbox"/> Shafter <input type="checkbox"/> Stockton <input type="checkbox"/> Arvin/Lamont			
	Home Address	City	State	Zip Code
	Mailing Address	City	State	Zip Code
Primary Phone	Alternate Phone	E-mail		

EQUIPMENT INFORMATION	Please select which option you are applying for:		
	<input type="checkbox"/> <b>OPTION 1-</b> Purchase of new electric lawn mower ( <i>destroying old mower</i> )		
	Purchase Date	New Electric Lawn Mower Make & Model	Base Price
	<p style="color: #76b82a; font-size: small;"><b>ATTENTION:</b> Please contact a participating dismantling facility to verify any requirements for submitting the old lawn mower. Personnel at the facility will inspect the old mower and provide you with a <b>Destruction Verification Form</b>. This form must be dated within 30 days of new equipment purchase and be submitted along with your application. For participating facilities, visit <a href="http://valleyair.org/cgym">valleyair.org/cgym</a>.</p>		
Participating Dismantler Name		Date Delivered to Dismantler	
<input type="checkbox"/> <b>OPTION 2-</b> Purchase of new lawn care equipment ( <i>no old equipment being destroyed</i> )			
Type of Electric Equipment ( <i>leaf blowers are not eligible</i> )		Base Price	
<input type="checkbox"/> Mower <input type="checkbox"/> Edger <input type="checkbox"/> String Trimmer <input type="checkbox"/> Hedge Trimmer <input type="checkbox"/> Chainsaw <input type="checkbox"/> Pole Saw			

CERTIFICATION	I hereby certify that all information provided in the Rebate Application, including any attachments, are true and correct. By signing this application, I have read, understand, and will comply with all requirements of the CGYM Residential Rebate Program Guidelines.		
	Printed Name of Applicant	Applicant Signature	Date

CHECKLIST & SUBMIT	You are almost done!	When complete, please submit via:
	<p>Please submit the following:</p> <ul style="list-style-type: none"> <li><input type="checkbox"/> Signed and completed Rebate Application</li> <li><input type="checkbox"/> Copy of invoice or receipt of purchase</li> <li><input type="checkbox"/> Destruction Verification Form if Option 1</li> </ul> <p><i>For assistance with your application, please call program staff at (559) 230-5800.</i></p>	<p><b>MAIL:</b> San Joaquin Valley Air Pollution Control District Attention: CGYM Rebate Program Staff 1990 East Gettysburg Ave., Fresno, CA 93726-0244</p> <p><b>E-MAIL:</b> <a href="mailto:grants@valleyair.org">grants@valleyair.org</a>   <b>FAX:</b> (559) 230-6112</p> <p><b>OR APPLY ONLINE:</b> <a href="http://valleyair.org/cgymresidential">valleyair.org/cgymresidential</a></p>

## RESIDENTIAL REBATE PROGRAM GUIDELINES

The Clean Green Yard Machines Residential Rebate Program provides two options for rebates to Valley residents. Option 1 is for the replacement of old gas- or diesel-powered lawn mowers with eligible new electric lawn mowers, and Option 2 is for the purchase of new electric lawn care equipment without having to turn in and replace old equipment. Applications are processed on a first-come, first-serve basis while funds are available.

### ELIGIBLE REBATE AMOUNT

The rebate is based on the purchase price of the electric equipment and does not include additional costs such as taxes, fees, accessories, and delivery charges. For bundle purchases of multiple pieces of equipment, the rebate will be based on the individual cost of the eligible piece of equipment. For Option 1, enhanced incentives are available to residents of the Shafter, Fresno, Stockton and Arvin/Lamont AB 617 Communities. Please visit [valleyair.org/cgym](http://valleyair.org/cgym) to see if you qualify.

#### Option 1 Purchase of new electric lawn mower (*destroying old mower*):

PURCHASE PRICE	REBATE AMOUNT (VALLEY WIDE)	AB 617 COMMUNITIES: FRESNO, SHAFTER, STOCKTON & ARVIN/LAMONT
*\$200 or less	*Up to \$100	100% of the Cost
\$201 to \$350	\$150	100% of the Cost
\$351 or more	\$250	100% of the Cost (up to \$500)

\*Applicants are responsible for a minimum of 50% of the purchase price for mowers.

#### Option 2 Purchase of new lawn care equipment (*no old equipment being destroyed*):

EQUIPMENT TYPE	PURCHASE PRICE	REBATE AMOUNT
*Lawn Mower, Edger, String and Hedge Trimmers, Chainsaw and Pole Saw	Less than \$100	\$25
	More than \$100	\$50

\*Leaf blowers are not eligible. Applicants are responsible for a minimum of 50% of the purchase price. Rebates are based on the purchase price of one electric equipment with 1 power unit, 1 battery, and 1 charger but does not include additional costs such as taxes, fees, accessories, attachments and delivery charges.

### REBATE PROCESS

#### OPTION 1: 1 Purchase an eligible new lawnmower.

- 2 Within 30 calendar days from the date of purchase, take your old lawnmower to a participating dismantling facility. Please contact the dismantling facility to verify its requirements for submitting the old lawn mower (i.e., fluids drained, etc.) prior to taking it to the facility. Personnel at the facility will inspect the old mower and provide you with a Destruction Verification Form. You must obtain a Destruction Verification Form dated within 30 days of new equipment purchase. For participating facilities, visit [valleyair.org/cgym](http://valleyair.org/cgym).
- 3 Complete the rebate application and submit it to the District along with a copy of the Destruction Verification Form and receipt or invoice for the new lawn mower.

#### OPTION 2: 1 Purchase an eligible new lawn mower, edger, trimmer, chainsaw, or pole saw.

- 2 Complete the rebate application and submit it to the District along with a copy of the receipt or invoice for the new electric equipment.

Please allow approximately 4 weeks from the time the District receives your completed rebate application to issue you a rebate.

## RESIDENTIAL REBATE PROGRAM GUIDELINES

### PROGRAM REQUIREMENTS AND ELIGIBILITY

- *Submittal of an application does not guarantee a rebate. Program eligibility is determined at the sole discretion of the District. Participant will be notified if their application is deemed ineligible.*
  - *Applicant must be a resident at the address identified on the application.*
  - *Applicant must reside within the Air District boundaries.*
    - › *Option 1 - Limit one (1) rebate per address for every two (2) consecutive years.*
    - › *Option 2 - Limit one (1) rebate per equipment type, per address for every one (1) year.*
  - *Combo Kit with one power unit and multiple attachments is considered one equipment type.*
  - *For bundle purchases of two or more pieces of eligible equipment, separate applications must be submitted for each piece of equipment. Equipment purchased as part of a bundle are eligible for separate rebates only if each piece of equipment has a separate power unit. For the first piece of eligible equipment, the rebate amount is based on the current individual retail price of that specific equipment. The rebates for subsequent eligible pieces of equipment in the bundle with a separate power unit are based on the remaining balance of the purchase price of the bundle, less the current individual retail price of the first piece of equipment for which a rebate was applied.*
  - *Applicant must submit a rebate application within six (6) months of the purchase date of the new equipment.*
  - *The new electric equipment must be purchased with a power unit and from a manufacturer-authorized retailer or dealer. You can find a list of manufacturers here: [valleyair.org/cgym](http://valleyair.org/cgym).*
  - *For Option 1, Applicant must turn in a fully functional old gas- or diesel-powered lawn mower to an approved dismantler for permanent destruction. Find an authorized dismantler here: [valleyair.org/cgym](http://valleyair.org/cgym).*
  - *Applicant must maintain ownership of the new lawn care equipment for a minimum of two (2) consecutive years following the purchase date.*
- New Equipment must:***
- *Be new, not used or previously owned*
  - *Be electric (corded or battery-powered)*
  - *For mowers, be a push or self-propelled specified for residential use*
  - *Have a minimum one-(1) year manufacturer warranty*
- Lawnmowers that are not eligible:***
- *Reel mowers*
  - *Riding lawn mowers*
  - *Tractors used to pull mowing equipment*
  - *Tow-behind mowers*

Clean Green Yard Machines Residential Rebate Program is part of [California Climate Investments](#), a statewide initiative that puts billions of Cap-and-Trade dollars to work reducing greenhouse gas emissions, strengthening the economy and improving public health and the environment, particularly in disadvantaged communities.

## **Attachment 3**

### **Manufacturer Application**



**Attachment 3**  
**Clean Green Yard Machines**  
**AB 617 Community Lawn Mower Trade-in Events**  
**Manufacturer Application**

<b>Business Information</b> All fields are required unless otherwise indicated		
Business Name (as it appears on Form W-9):		
Federal Tax ID Number:		
Address:		
City:	State:	Zip Code:
Mailing Address (if different from above):		
City:	State:	Zip Code:
Phone Number:	Business Email (If available):	
Business website (optional):		
<b>Primary Contact Information</b>		
First and Last Name (Print):	Title:	
Phone Number:	Email:	
<b>Signing Authority Information</b> – Authorized personnel that can legally enter into an agreement with the District.		
First and Last Name (Print):	Title:	
Phone Number:	Email:	

*I hereby certify that all information provided in this application and any attachments are true and correct to the best of my knowledge. If selected through the bidding process, I agree to enter into an agreement with the District. Full participation in the program will not occur until all parties have signed the agreement.*

Signature of Signing Authority:	Date:
---------------------------------	-------



<b>Zero-Emission Electric Lawn Mower Specifications</b> (All fields are required)	
Make:	Model:
Battery Type (chemistry, voltage, and Ah capacity):	
Number of Batteries Included:	Charger Included (yes/no):
MSRP:	
Total Cost (must include battery, charger, taxes and any additional fees): This is the cost the business is willing to sell the lawn mowers for through the events. <b>Must be less than \$500.00.</b>	

## SCORING CRITERIA

Your application will be evaluated and scored based on the zero-emission electric lawn mower specifications provided in this application and your responses to the following categories. Please attach your responses to this application for a complete application packet.

### Manufacturer Capabilities – 35 Points

1. Provide a brief narrative of the manufacturer’s experience within the landscaping equipment industry, and development/manufacturing of zero-emission landscaping equipment for residential purposes. Please also include information/experience specifically related to zero-emission electric lawn mowers.
2. Due to the strong support of the CSC members to conduct lawn mower trade-in events, up to 8 events are anticipated to be scheduled and implemented in 2024, with up to 300 lawn mowers distributed per event. Please explain manufacturer’s level of readiness and capacity in providing a sufficient number of electric lawn mowers to meet the needs of the AB 617 communities as identified in the RFA. Please specify how many electric lawn mowers can be provided for each event. The lawn mowers provided must be the same make and model specified in this application.
3. The AB 617 communities identified in the RFA are located in several counties within the San Joaquin Valley. To help community members easily participate, events will be conducted at a location within or near an AB 617 community. Please explain the manufacturer’s ability to co-host these in-person events at the different AB 617



communities. If the manufacturer is not available to co-host events at all of the AB 617 communities, please identify which communities they can support. Please explain if the manufacturer has any authorized retailers/dealerships within or near the AB 617 communities that sell their electric lawn mowers and could be considered as potential event sites. If retailer/dealership locations are available, please list their business name, address, identify which AB 617 communities they are located in or near, and if they have expressed interest in hosting an event. Please explain if manufacturer would be willing to coordinate with authorized retailers/dealerships to help organize events.

4. As part of the CGYM Program requirements, the old gas lawn mowers that are replaced with the new electric lawn mowers must be permanently removed from service by being submitted to a program approved dismantling facility. This process is facilitated at the lawn mower trade-in events by coordinating with a dismantling facility to have the old lawn mowers collected and taken to their facility. Please explain if the manufacturer is willing to coordinate with a program approved dismantler to organize on-site collection of old gas mowers during the events, and/or has existing partnerships with the dismantling facilities for such processes through past events.

#### **Product Specification and Cost – 35 Points**

1. To increase the acceptance and continued utilization of zero-emission electric landscaping equipment, consumers must have confidence in the reliability of the equipment and feel that the purchase of such technology is cost-effective in comparison to a gas alternative. Please explain how the electric lawn mower identified in this application has been reviewed overall by consumers, and would further promote electric landscaping equipment for residents. Please explain how the lawn mower in this application is the best option for residential use. If available, please provide any pertinent product information or data, such as ease of use, battery life, run time per charge, charging time, etc., that would support manufacturer's selection of the lawn mower in this application.
2. If applicable, please explain any known additional costs to owning and operating the lawn mower identified in this application, including, but not limited to, the following costs: additional batteries for sufficient runtimes, replacement battery, replacement charger, maintenance, etc.
3. To support the adoption of other electric landscaping equipment, please explain if the battery included with the lawn mower can be used interchangeably with other landscaping equipment. For this section, please also include the MSRP of a new battery.



**Previous Event Experience – 20 Points**

1. Please explain if the manufacturer has had past experience implementing similar lawn mower or landscaping equipment events. If so, please describe the events and how they were conducted. Please list the events and the business/agencies that organized or co-hosted the events, including contact information.

**Product Warranty – 5 Points**

1. Please explain any warranties available for the electric lawn mower identified in this application. In addition, please explain the process the consumer has to complete to register for a warranty. Please explain if manufacturer is willing and capable of completing the warranty registration process for the consumer during the lawn mower trade-in events; and if so, what the process would potentially entail.

**Outreach – 5 Points**

1. For the lawn mower trade-in events, targeted outreach to residents of the AB 617 communities will be necessary to ensure ample participation. Please explain if the manufacturer is willing to assist the District with outreach activities for the events. If available, please explain what outreach mechanisms or strategies the manufacturer can offer to support and promote the events.



## Application Checklist

Please submit a **complete** application packet. District staff may contact you if your application is incomplete. A complete application packet includes the following items:

- Completed **Manufacturer Application** (Attachment 3), no required fields blank.
  - Completed and signed Page 1 (Manufacturer information) and Page 2 (Lawn mower specifications).
  - Responses to Scoring Criteria categories listed on Pages 2 to 4 of Attachment 3.
- Documentation showing the applicant has had a valid Employer Identification Number and California business license for a minimum of the previous (2) two years.
- If applicable per the RFA, copy of a valid Certificate of Liability **Insurance** Form (ACORD Form) for the applicant which identifies coverage in the amounts as follows:
  - General liability insurance with a combined single limit with minimum limits of coverage in the amount of \$2 million per occurrence; and
  - Automobile liability insurance which covers bodily injury and property damage with a combined single limit with minimum limits of coverage in the amount of \$1 million per occurrence.
  - Workers compensation, as required by California law (Please provide a letter of explanation if you are not required to provide workers compensation)
  - San Joaquin Valley Air Pollution Control District identified as the Certificate Holder
  - In the Description of Operations/Locations/Vehicles field, please specify the following: “San Joaquin Valley Air Pollution Control District is named as additional insured.”
- Completed first page of IRS **Form W-9**. The Form can be found at:  
<https://www.irs.gov/pub/irs-pdf/fw9.pdf>
- Product manual or equipment specification sheet for the lawn mower identified on Page 2 of the Manufacturer Application.
- Price quote for the lawn mower, including cost of battery, charger, taxes and any additional fees.
- Copy of product warranty for lawn mower identified on Page 2 of the Manufacturer Application.